

Product Number	"A" Dim.	"B" Dim.
SG-S-M-H-50.5-133	133mm [5.24in]	90mm [3.543in]
SG-S-M-H-50.5-178	178mm [7.01in]	135mm [5.315in]
SG-S-M-H-50.5-223	223mm [8.78in]	180mm [7.087in]
SG-S-M-H-50.5-268	268mm [10.55in]	225mm [8.858in]
SG-S-M-H-50.5-313	313mm [12.32in]	270mm [10.630in]
SG-S-M-H-50.5-403	403mm [15.87in]	360mm [14.173in]

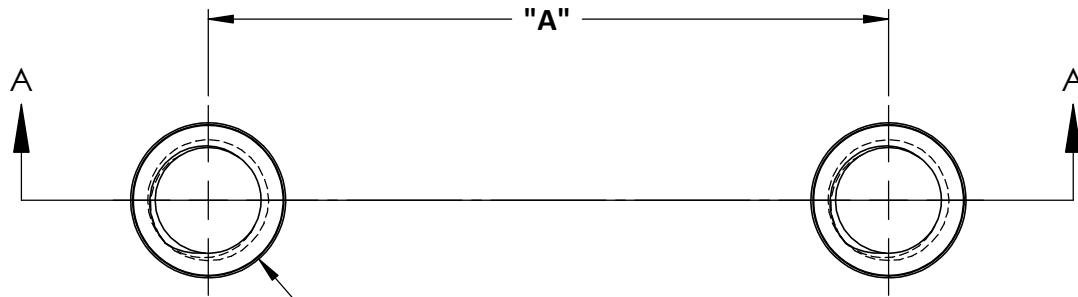
DO NOT SCALE DRAWING    REV 1

This product may be covered by one or more patents or patent applications.  
See <http://www.standardlifters.com/patents.html> for details.

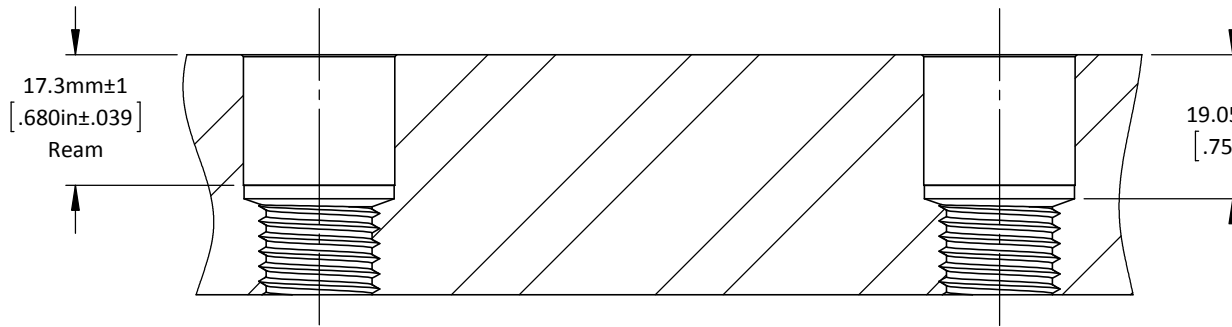
**Stock Guide-SG-S-M-H-50.5**

**STANDARD LIFTERS INC**

Product Number	"A" Dim.
SG-S-M-H-50.5-133	90mm [3.543in]
SG-S-M-H-50.5-178	135mm [5.315in]
SG-S-M-H-50.5-223	180mm [7.087in]
SG-S-M-H-50.5-268	225mm [8.858in]
SG-S-M-H-50.5-313	270mm [10.630in]
SG-S-M-H-50.5-403	360mm [14.173in]



Ream Drill (Ref.  $\phi$  19.84mm [.781in])  
 Tap Drill (Ref.  $\phi$  14.0mm [.551in])  
 $\phi$  20.000mm [.7874in] Ream  
 M16 X 2 Tap



19.05mm Ream Drill Depth  
 [.750in] \*Reference to Drill Point  
 118° - 25mm [.985in] Dp.  
 135° - 23.2mm [.912in] Dp.  
 140° - 22.7mm [.892in] Dp.

DO NOT SCALE DRAWING	REV 2	<b>Stock Guide-SG-S-M-H-50.5-Machining</b>
This product may be covered by one or more patents or patent applications. See <a href="http://www.standardlifters.com/patents.html">http://www.standardlifters.com/patents.html</a> for details.		