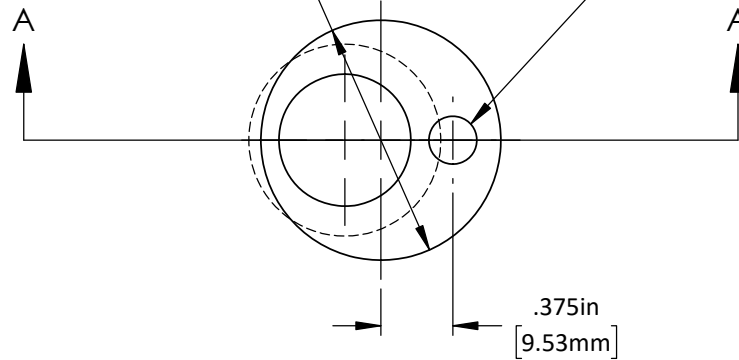
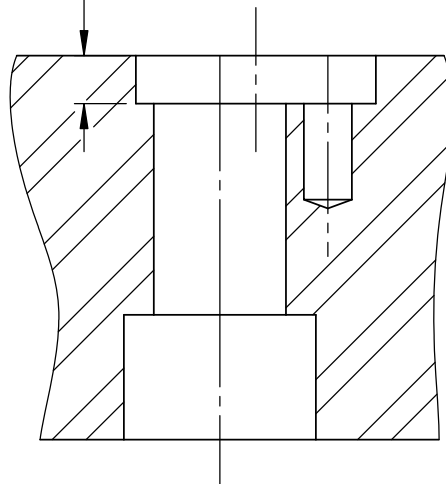


$\varnothing 1.2500 \pm .0005 \times .250 \text{ in Dp.}$
 $[\varnothing 31.75 \text{ mm} \pm .013 \times 6.35 \text{ mm Dp.}]$

Drill for supplied Roll Pin
 "E" = $\varnothing .250 \text{ in} \times .50 \text{ in Dp.}$
 "M" = $\varnothing 6 \text{ mm} \times 12 \text{ mm Dp.}$

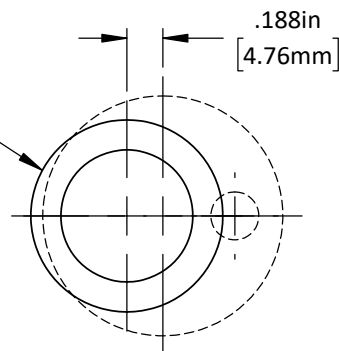


$.250 \text{ in Ref.}$
 $[6.35 \text{ mm}]$



SECTION A-A

Drill & C'bore For
 "E" = 5/8" SHCS
 "M" = M16 SHCS



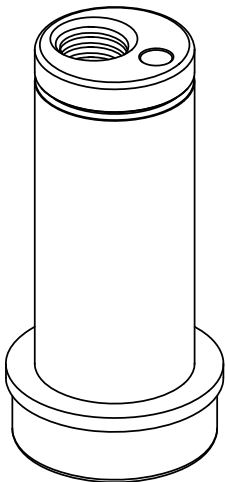
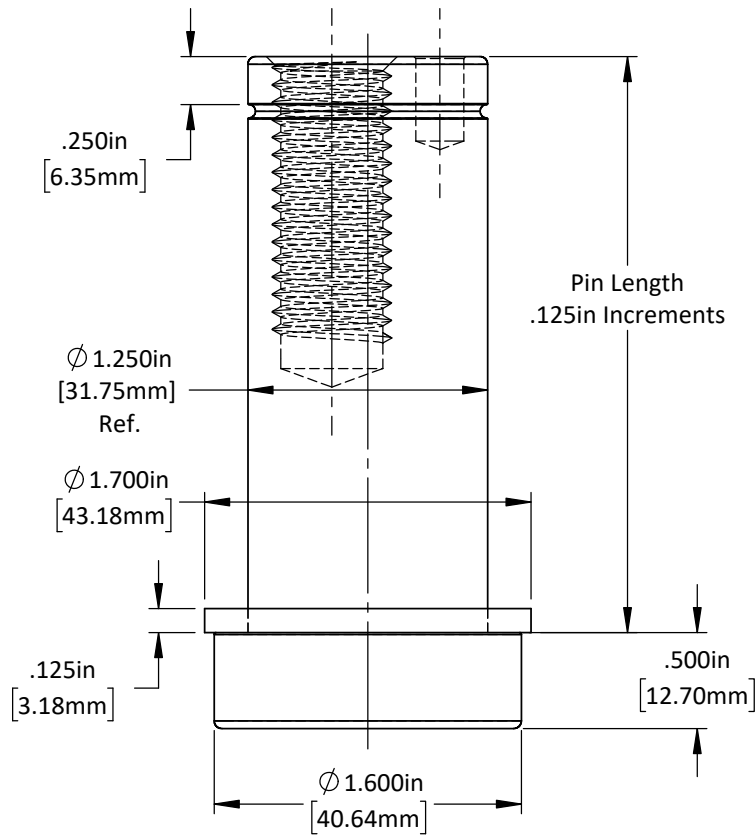
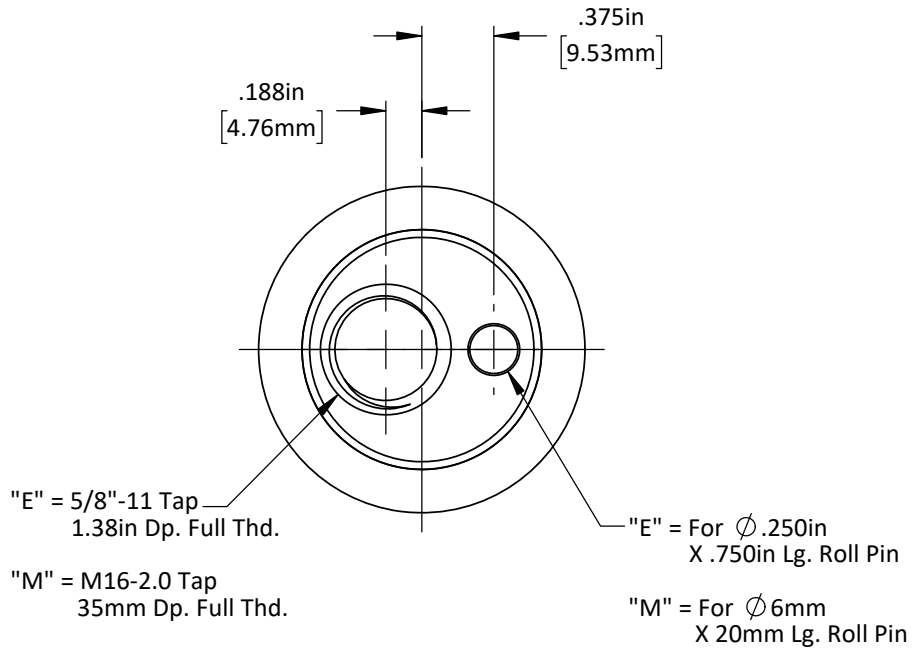
DO NOT SCALE DRAWING

REV 1

This product may be covered by one or more patents or patent applications.
 See <http://www.standardlifters.com/patents.html> for details.

Guide Pin GK115 Machining

Standard Lifters Inc



DO NOT SCALE DRAWING

REV 1

This product may be covered by one or more patents or
 patent applications.
 See <http://www.standardlifters.com/patents.html> for details.

Guide Pin GK115
Standard Lifters Inc