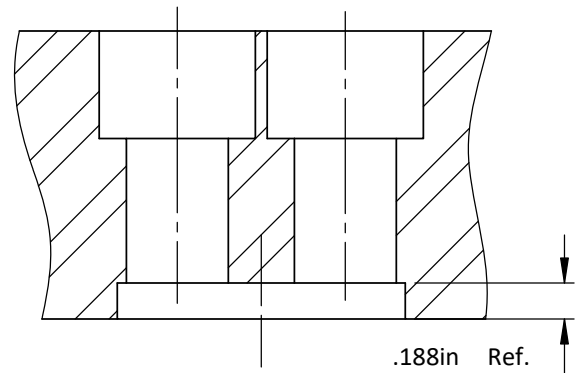
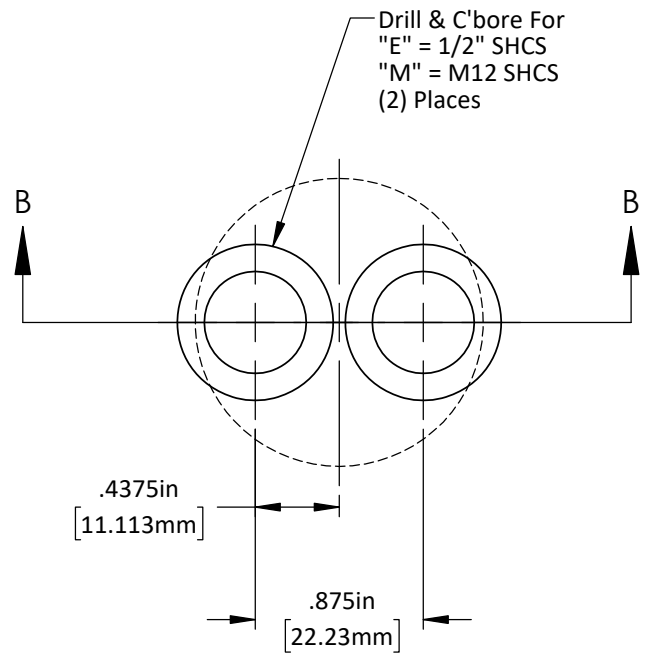
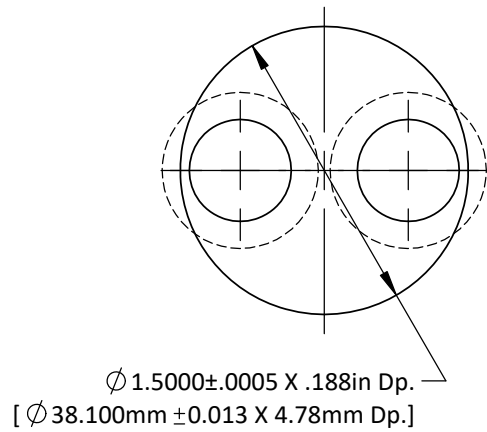


**Flush Mount Machining**



**SECTION B-B**



**Counterbore Mount Machining**

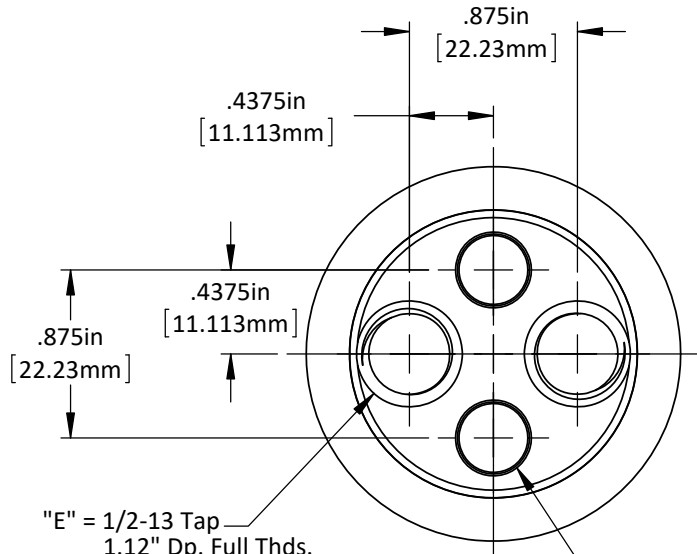
DO NOT SCALE DRAWING

REV 2

This product may be covered by one or more patents or patent applications.  
 See <http://www.standardlifters.com/patents.html> for details.

**Guide Pin GK150-Machining**

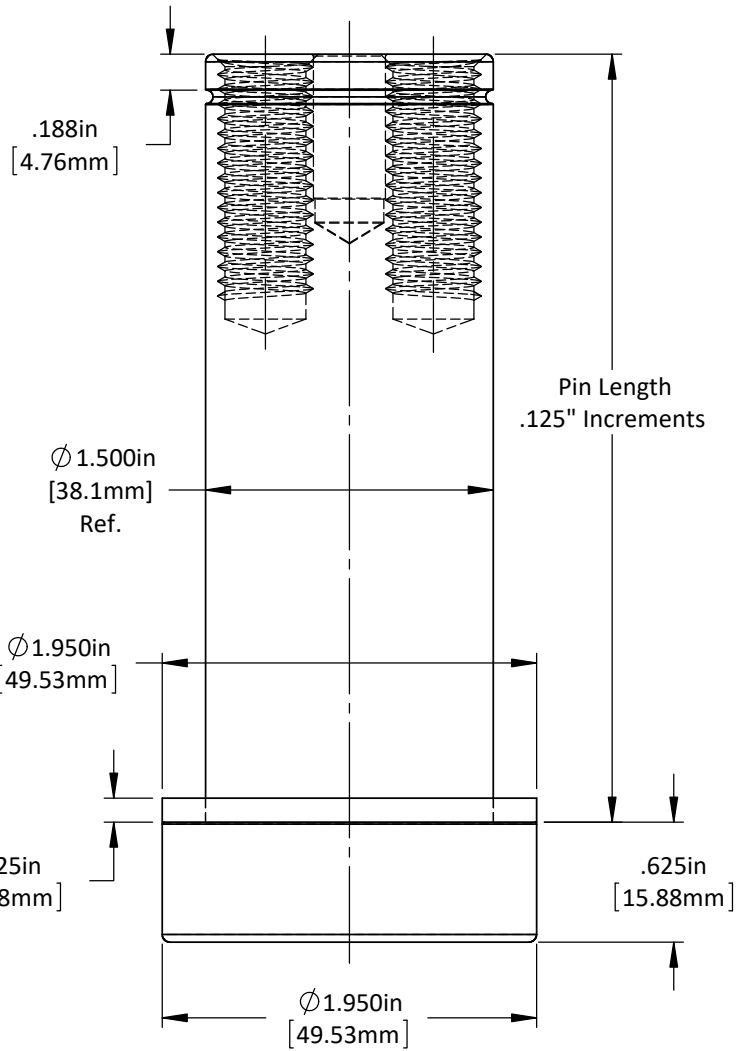
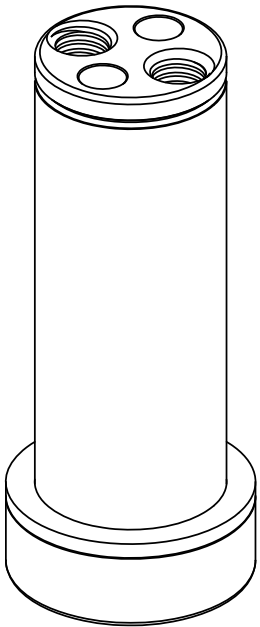
**Standard Lifters Inc**



"E" = 1/2-13 Tap  
1.12" Dp. Full Thds.

"M" = M12-1.75 Tap  
28mm Dp. Full Thds.  
(2) Plcs.

"E" =  $\varnothing$ .3750in Ream  
"M" =  $\varnothing$  10.000mm Ream  
(2) Plcs.



DO NOT SCALE DRAWING

REV 1

This product may be covered by one or more patents or patent applications.  
See <http://www.standardlifters.com/patents.html> for details.

**Guide Pin GK150**

**Standard Lifters Inc**