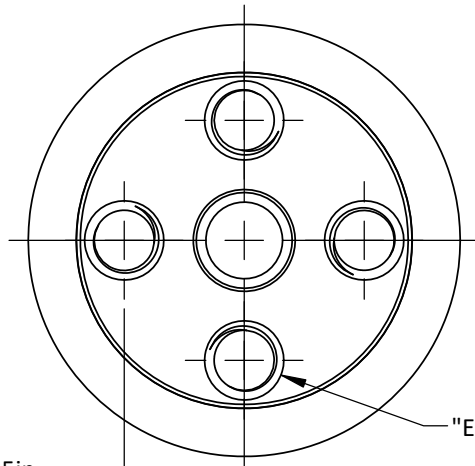


DO NOT SCALE DRAWING

REV 1

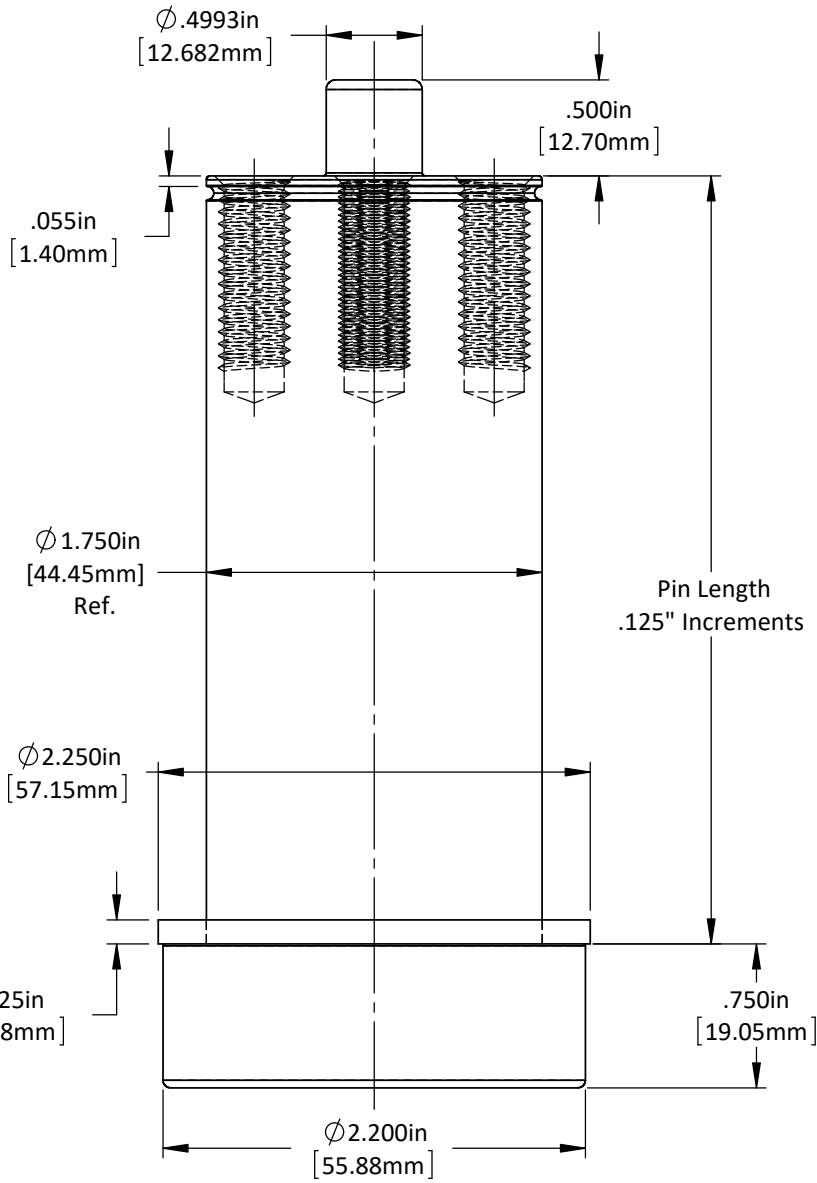
This product may be covered by one or more patents or patent applications.  
See <http://www.standardlifters.com/patents.html> for details.

**Guide Pin GK175-Machining**  
**Standard Lifters Inc**



.625in  
[15.88mm]  
Ref.

"E" = 3/8"-16 Tap  
0.88in Dp. Full Thd.  
"M" = M10-1.5 Tap  
22mm Dp. Full Thd.  
(4) Plcs. On a  $\varnothing$  1.250in [31.75mm]  
Bolt Circle



$\varnothing$ .4993in  
[12.682mm]

.500in  
[12.70mm]

.055in  
[1.40mm]

$\varnothing$  1.750in  
[44.45mm]  
Ref.

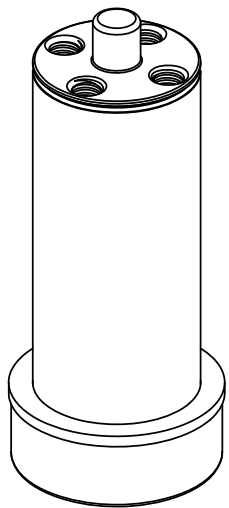
Pin Length  
.125" Increments

$\varnothing$  2.250in  
[57.15mm]

.125in  
[3.18mm]

.750in  
[19.05mm]

$\varnothing$  2.200in  
[55.88mm]



DO NOT SCALE DRAWING    REV 1  
This product may be covered by one or more patents or patent applications.  
See <http://www.standardlifters.com/patents.html> for details.

**Guide Pin GK175**  
**Standard Lifters Inc**