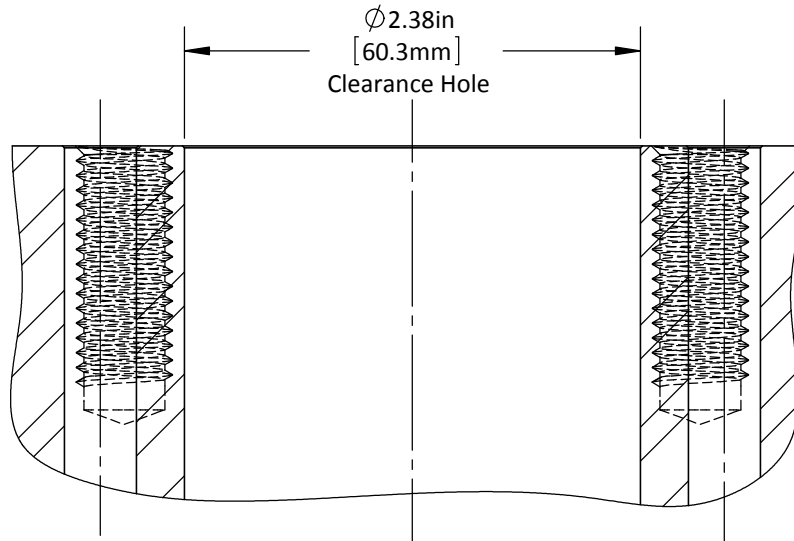


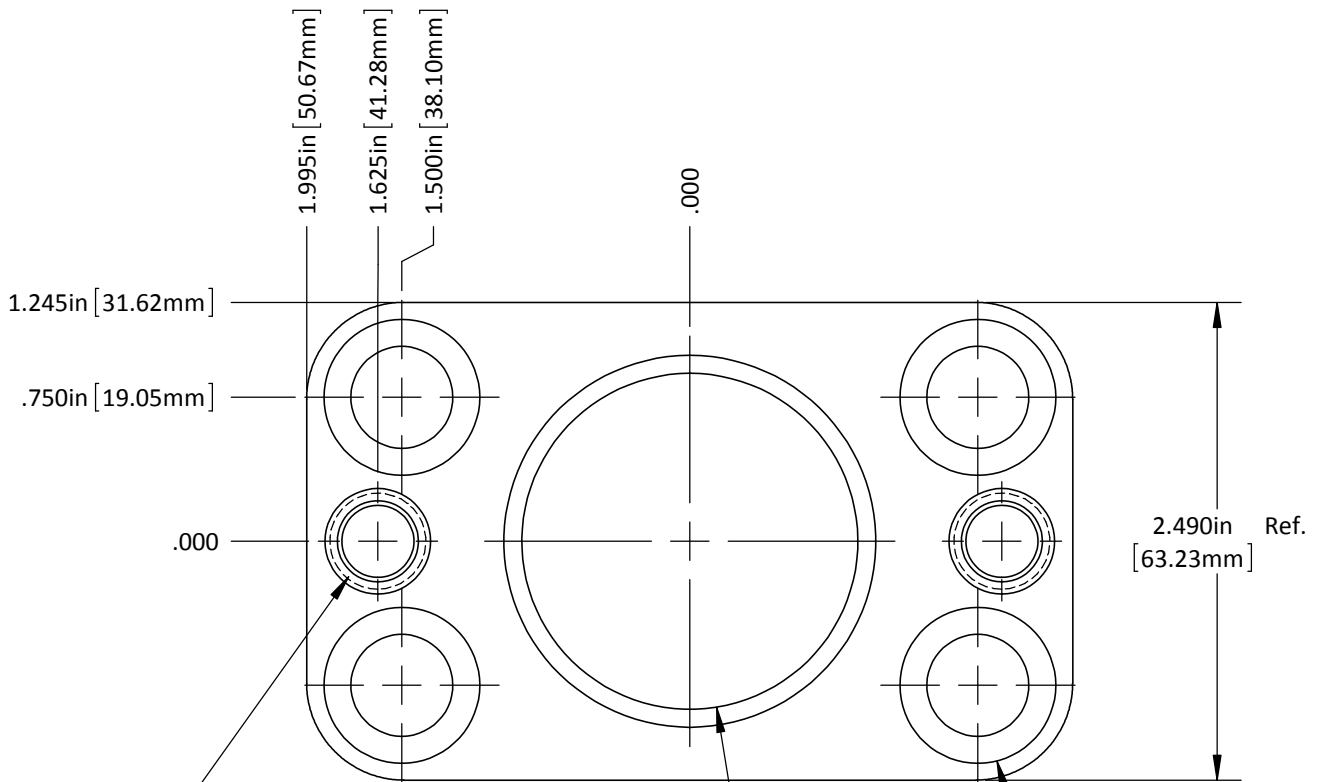
"E" = 1/2"-13 Tap
"M" = M12-1.75 Tap
(4) Places

Drill & Ream PF for Dowel
"E" = ϕ .375in
"M" = ϕ 10.00mm
(2) Places



DO NOT SCALE DRAWING	REV 1
This product may be covered by one or more patents or patent applications. See http://www.standardlifters.com/patents.html for details.	

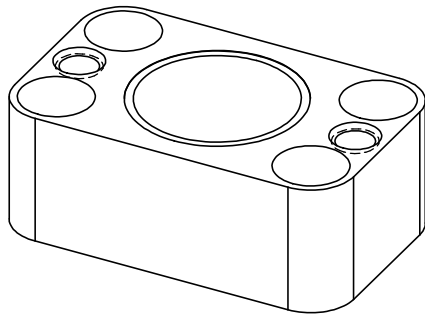
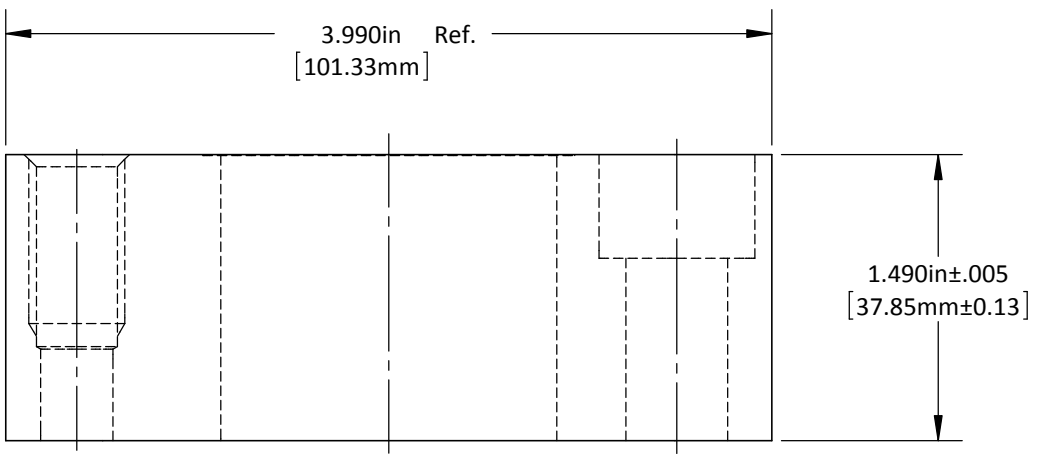
GK175-A-Base Machining
STANDARD LIFTERS INC



"E" = Slip Fit For 3/8" Dowel
 1/2"-13 Tap X .88" Dp.
 "M" = Slip Fit For 10mm Dowel
 M12-1.75 Tap X 22mm Dp.
 (2) Places

Ø1.750in Ref.
 [44.45mm]

Drilled & C'bored For
 "E" = 1/2" SHCS
 "M" = M12 SHCS
 (4) Places



DO NOT SCALE DRAWING | REV 1
 This product may be covered by one or more patents or patent applications.
 See <http://www.standardlifters.com/patents.html> for details.

Base-GK175-A
STANDARD LIFTERS INC