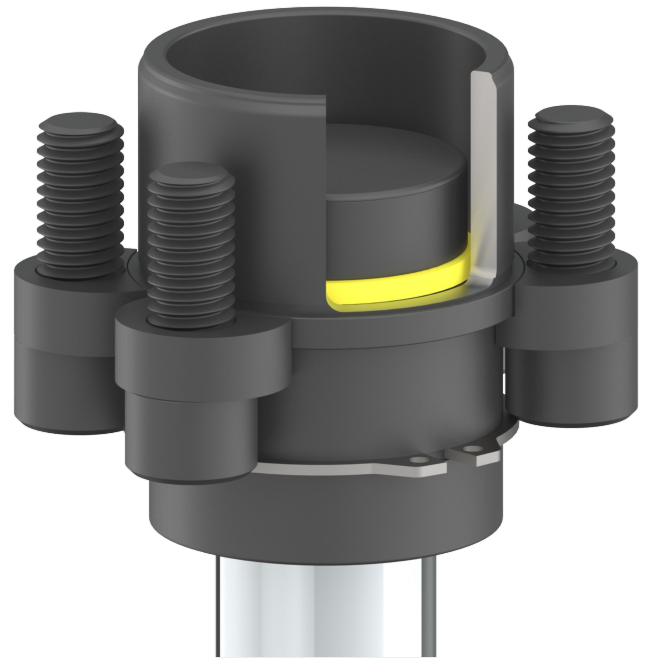
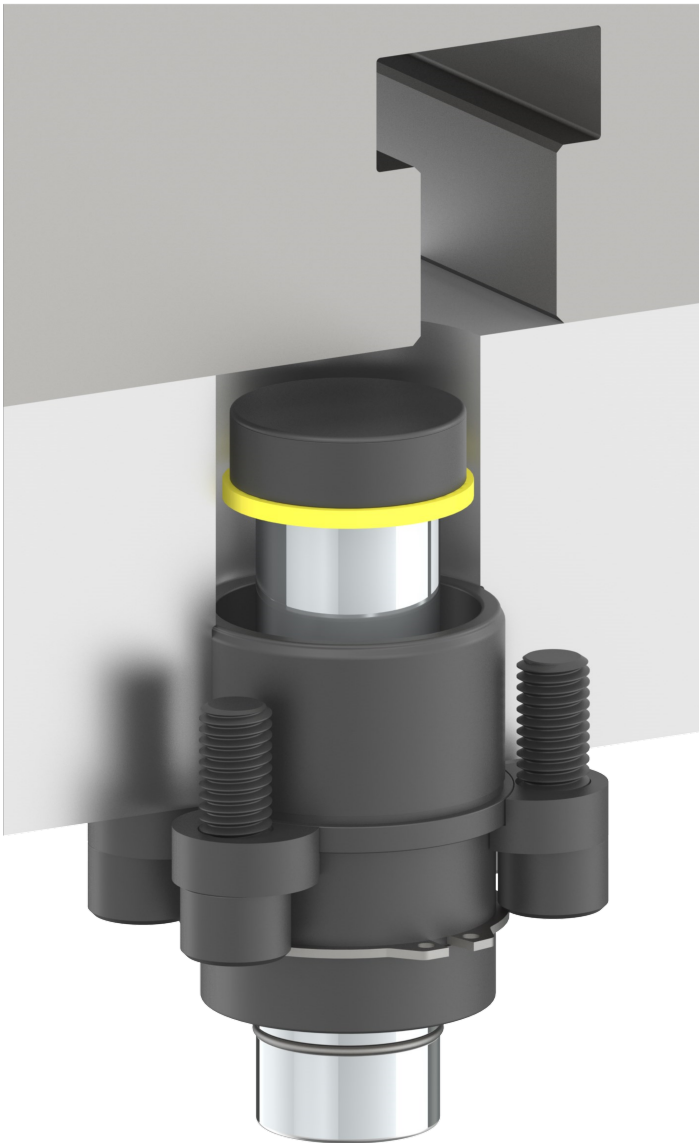




STANDARDLIFTERS
MAKING INNOVATION THE STANDARD®

Low Clearance GK Base - “P” Style

Designed for applications where upper parallels are not present or other constraints limit the amount of space available for the Guide Pin to travel.



We always recommend applying the longest bushing that will fit in the application. The P Style base should only be used when a longer bushing base style will not fit.