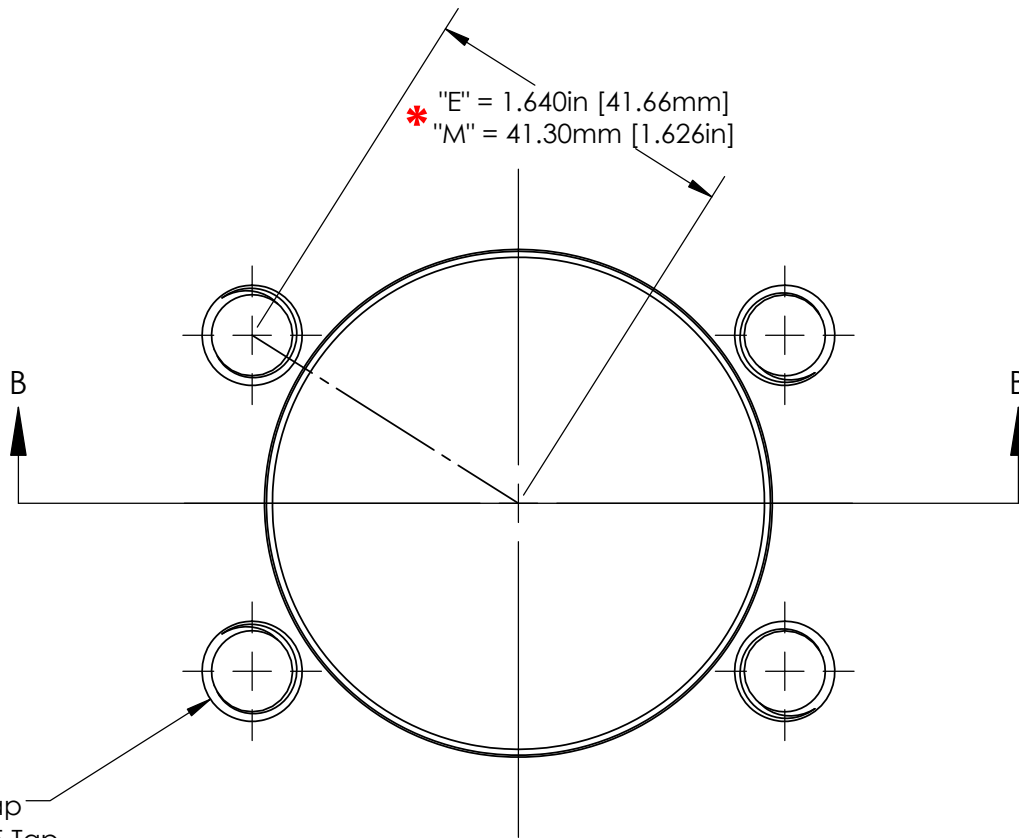
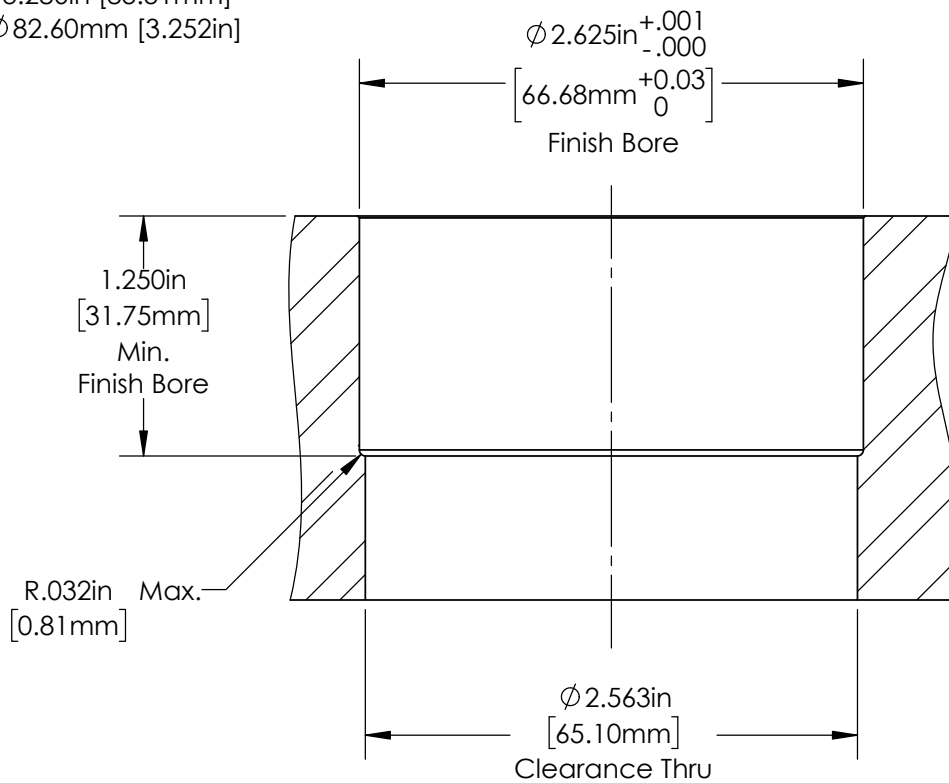


**\*Caution: English & Metric Hole Locations are NOT the Same!**



"E" = 1/2"-13 Tap  
 "M" = M12-1.75 Tap  
 (4) Plcs. on a Bolt Circle  
 \* "E" =  $\phi$ 3.280in [83.31mm]  
 "M" =  $\phi$ 82.60mm [3.252in]



DO NOT SCALE DRAWING

REV 1

This product may be covered by one or more patents or patent applications.  
 See <http://www.standardlifters.com/patents.html> for details.

**GK1.75-P1.5-Base Machining**

**STANDARD LIFTERS INC**

**\*Caution: English & Metric Hole Locations are NOT the Same!**

(4) Flange Clamps  
on a Bolt Circle:  
\* "E" =  $\phi$  3.280in [83.31mm]  
"M" =  $\phi$  82.60mm [3.252in]

\* "E" = 1.640in [41.66mm]  
"M" = 41.30mm [1.626in]

$\phi$  2.740in  
[69.60mm]

$\phi$  1.000in  
[25.40mm]

Clearance Hole  
"E" = 1/2" SHCS  
"M" = M12 SHCS

$\phi$  1.750in Ref.  
[44.45mm]

$\phi$  2.499in  
[63.48mm]

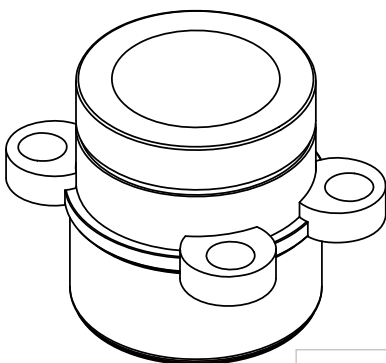
1.500in  
[38.10mm]

.375in  
[9.53mm]

2.75in  
[69.9mm]  
Ref.

1.250in  
[31.75mm]

$\phi$  2.6241in  
[66.652mm]



**Maximum Recommended Guide Pin Length is 4.875"**

DO NOT SCALE DRAWING

REV 1

This product may be covered by one or more patents or patent applications.  
See <http://www.standardlifters.com/patents.html> for details.

**Base-GK1.75-P1.5**

**STANDARD LIFTERS INC**