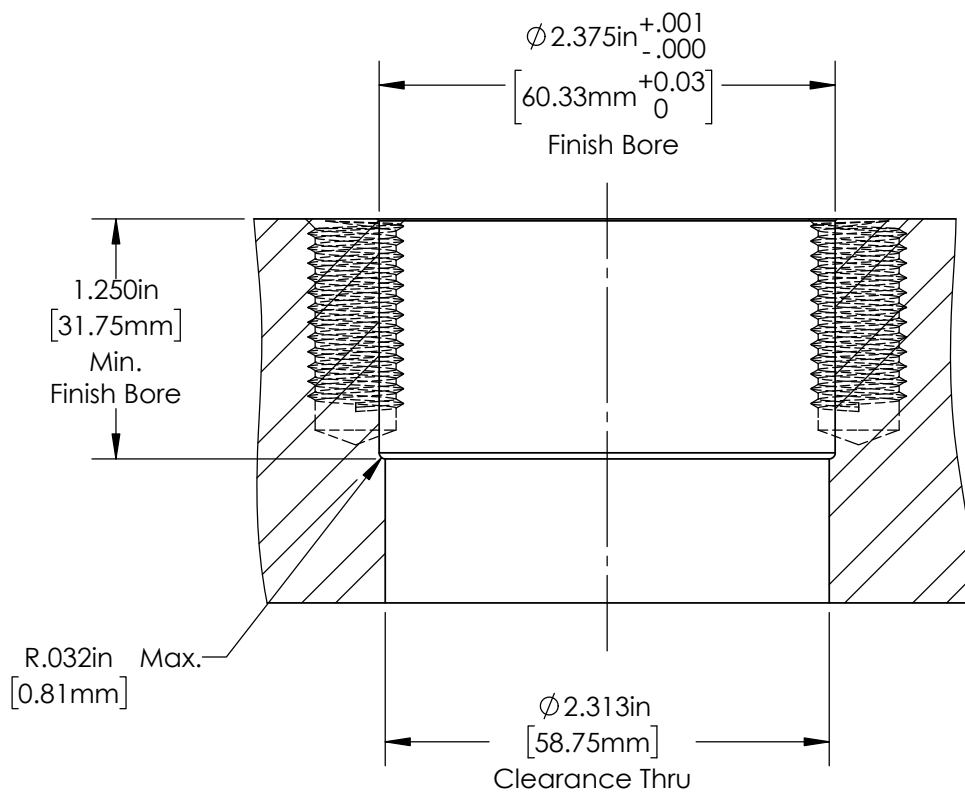
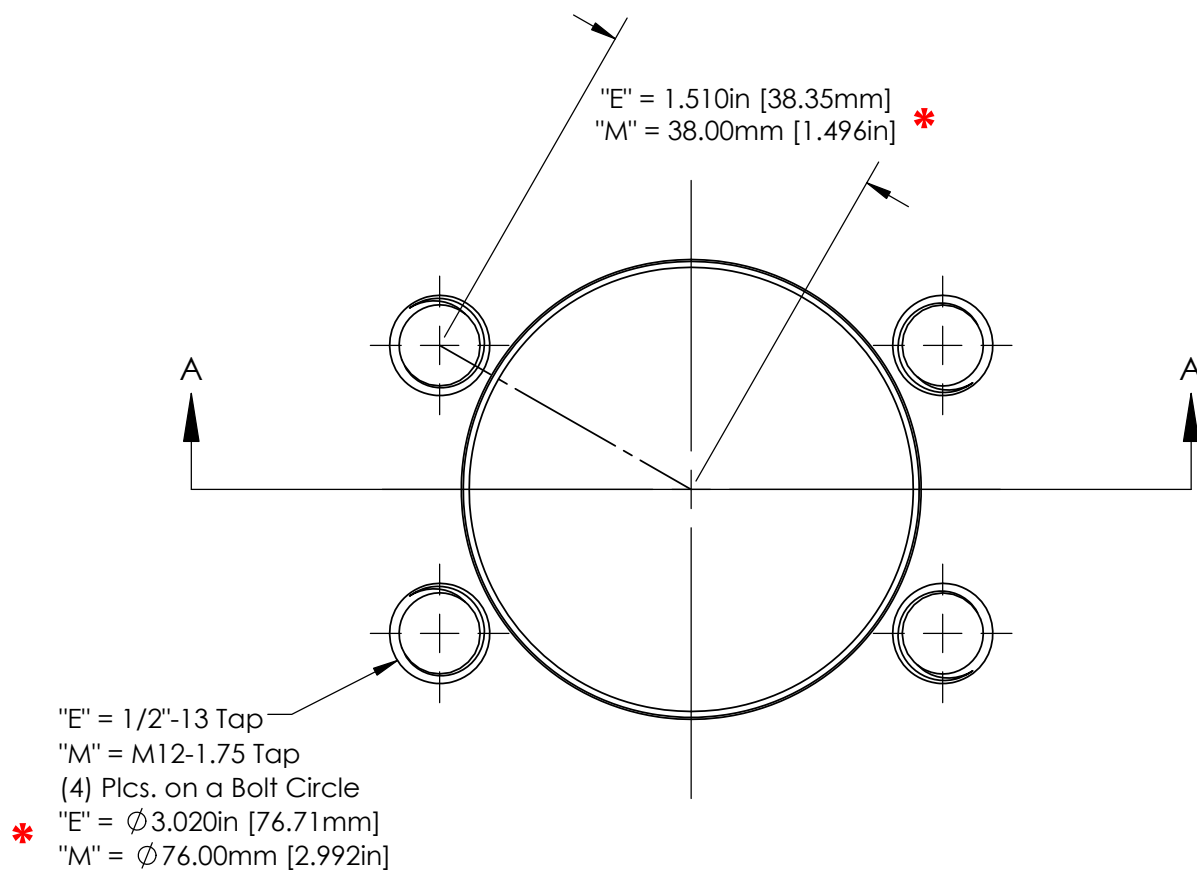


***Caution: English & Metric Hole Locations are NOT the Same!**



DO NOT SCALE DRAWING

REV 1

This product may be covered by one or more patents or patent applications.
See <http://www.standardlifters.com/patents.html> for details.

GK1.50-P1.5-Base Machining

STANDARD LIFTERS INC

***Caution: English & Metric Hole Locations are NOT the Same!**

(4) Flange Clamps
on a Bolt Circle:

*"E" = ϕ 3.020in [76.71mm]

"M" = ϕ 76.00mm [2.992in]

"E" = 1.510in [38.35mm] *

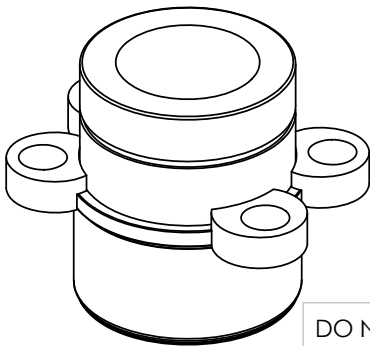
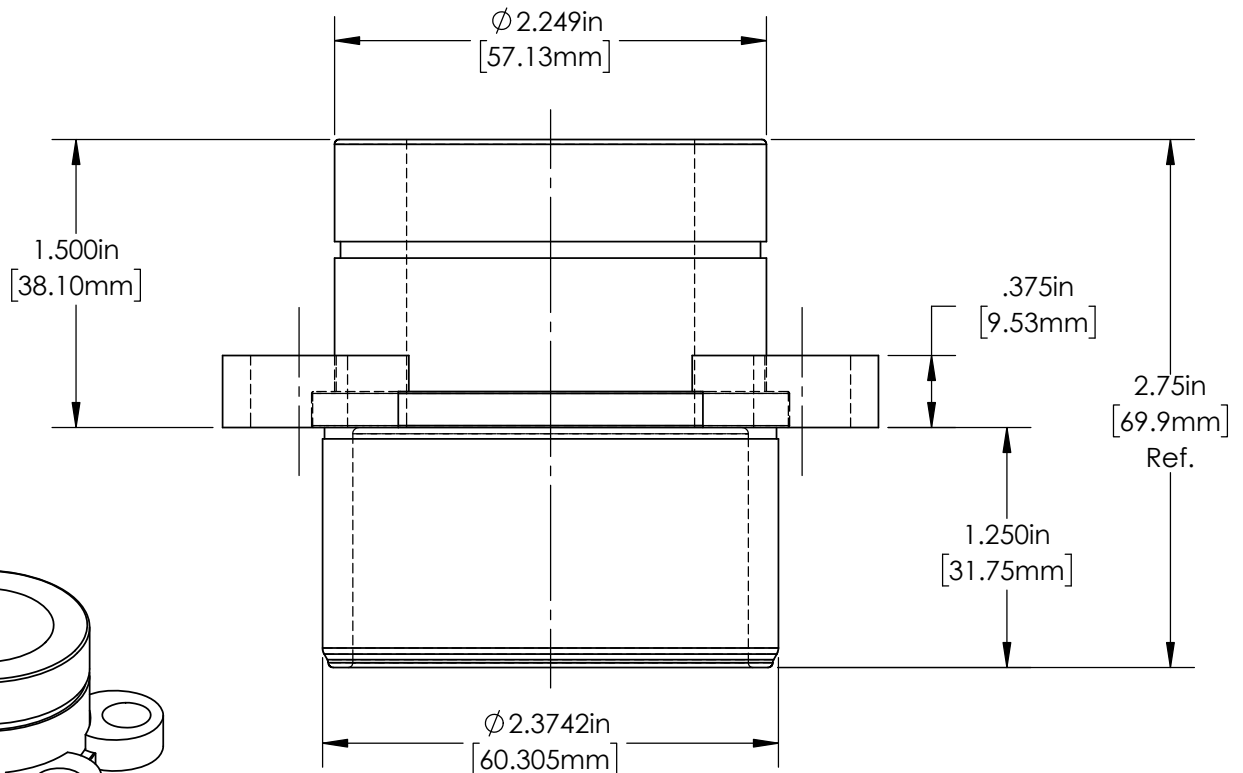
"M" = 38.00mm [1.496in]

ϕ 1.000in
[25.40mm]

Clearance Hole
"E" = 1/2" SHCS
"M" = M12 SHCS

ϕ 1.500in Ref.
[38.10mm]

ϕ 2.490in
[63.25mm]



DO NOT SCALE DRAWING

REV 1

This product may be covered by one or more patents or
patent applications.
See <http://www.standardlifters.com/patents.html> for details.

Base-GK1.50-P1.5

STANDARD LIFTERS INC