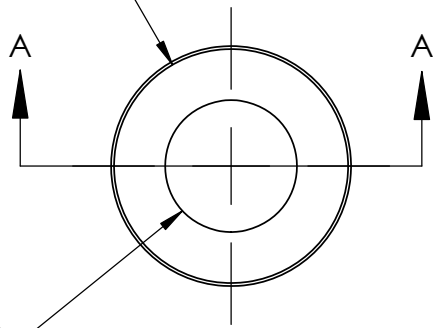


$\varnothing$  .6094in Drill X Depth Shown  
[15.48mm]

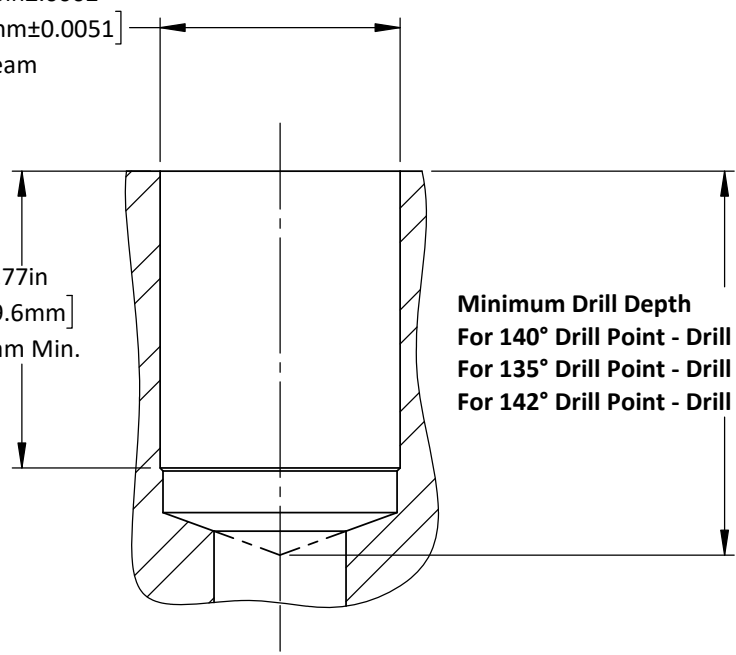


Clearance for 5/16 SHCS

$\varnothing$  .6250in $\pm$ .0002  
[15.8750mm $\pm$ 0.0051]  
Ream

.77in  
[19.6mm]  
Ream Min.

**Minimum Drill Depth**  
For 140° Drill Point - Drill 1.000in [25.4mm] Dp.  
For 135° Drill Point - Drill 1.015in [25.78mm] Dp.  
For 142° Drill Point - Drill .996in [25.3mm] Dp.



SECTION A-A

**\*Not to be used in Hardened Details**

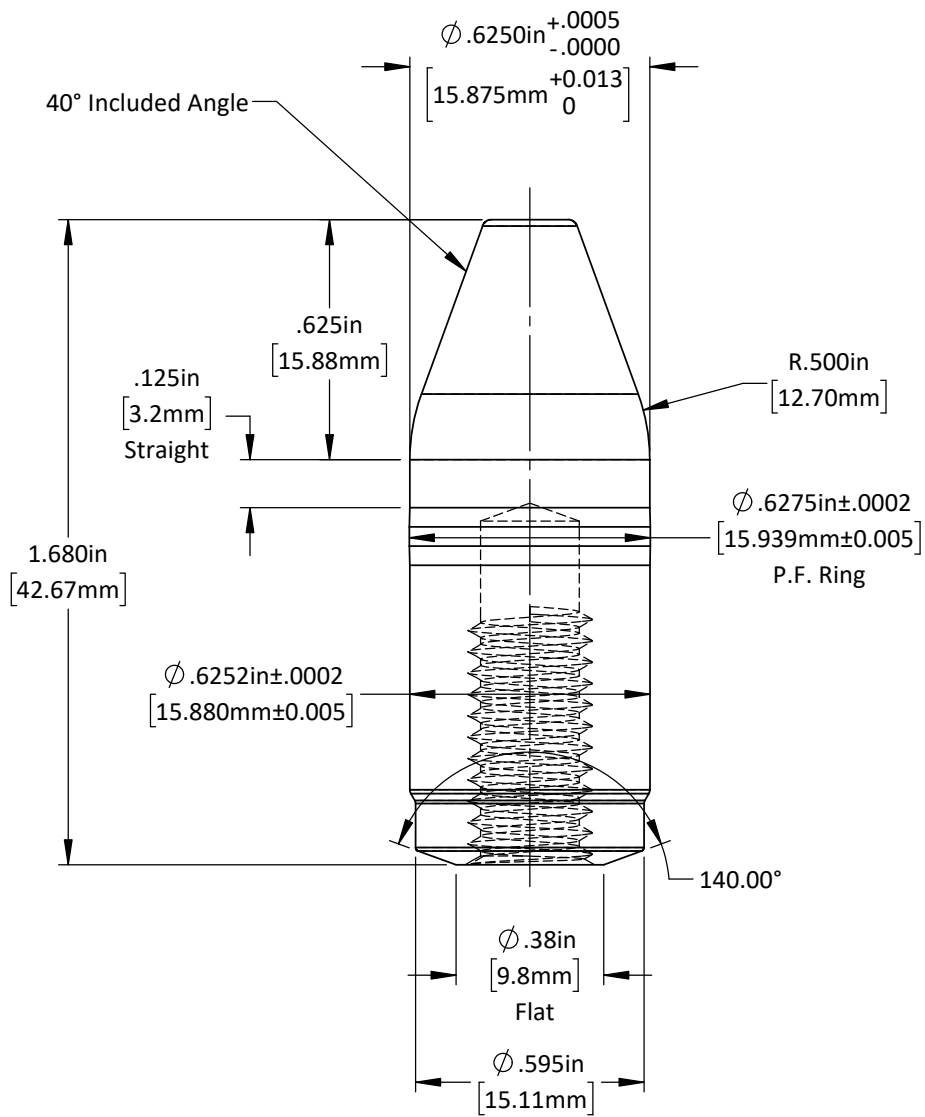
DO NOT SCALE DRAWING

REV 1

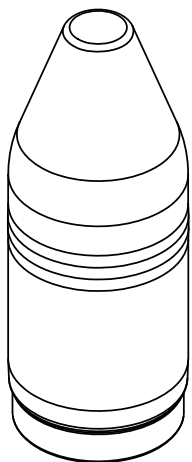
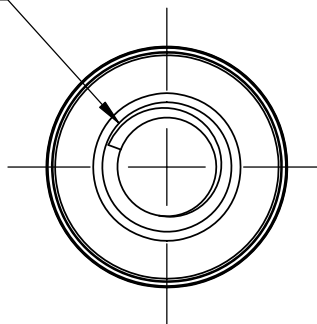
This product may be covered by one or more patents or patent applications.  
See <http://www.standardlifters.com/patents.html> for details.

**Pilot-P-.625-.125-BT-Machining**

**STANDARD LIFTERS INC**



5/16-18 Tap  
.56 Dp. Full Thd.



**\*Not to be used in Hardened Details**

DO NOT SCALE DRAWING

REV 1

This product may be covered by one or more patents or patent applications.  
See <http://www.standardlifters.com/patents.html> for details.

**Pilot-P-.625-.125-BT**

**STANDARD LIFTERS INC**