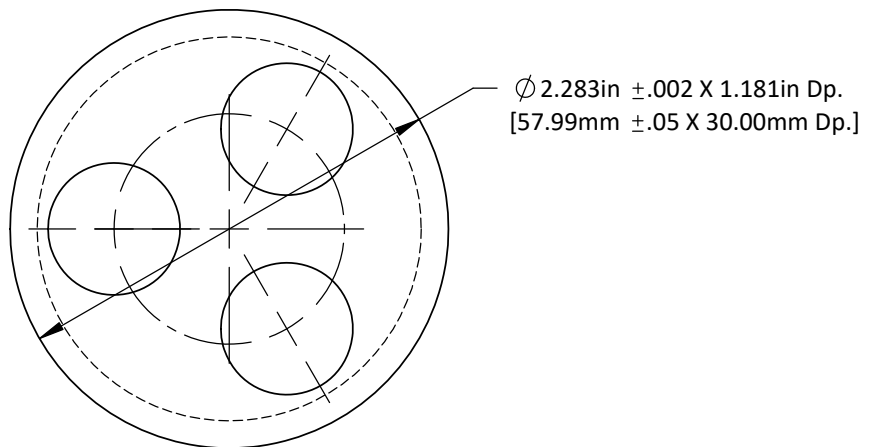
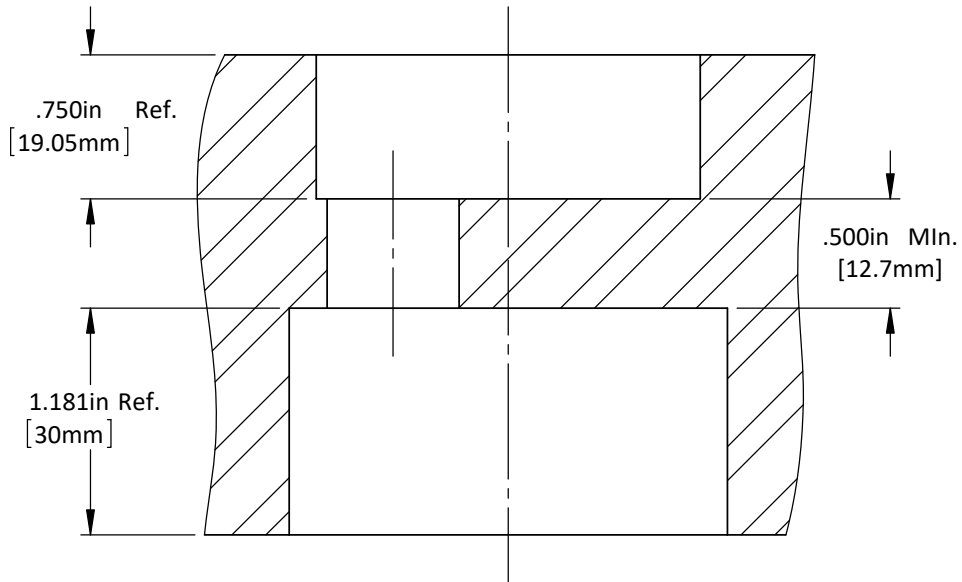
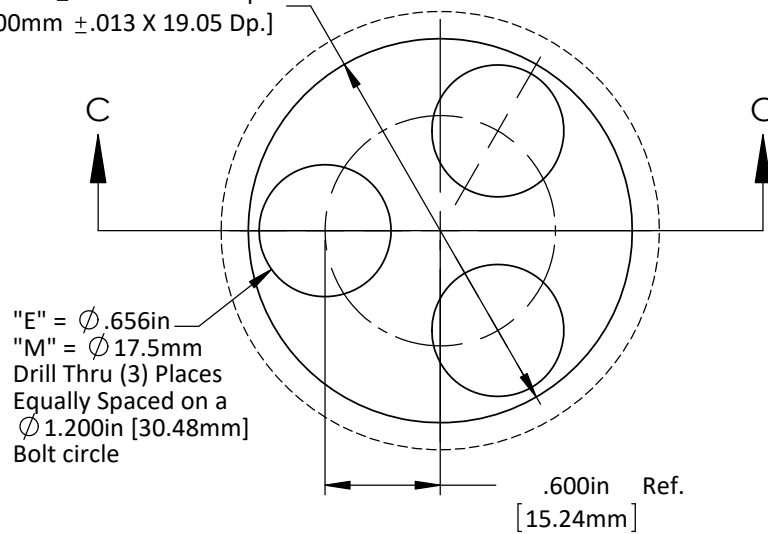


$\phi 2.000\text{in} \pm .0005 \text{ X } .750\text{in Dp.}$   
[ $\phi 50.800\text{mm} \pm .013 \text{ X } 19.05 \text{ Dp.}$ ]



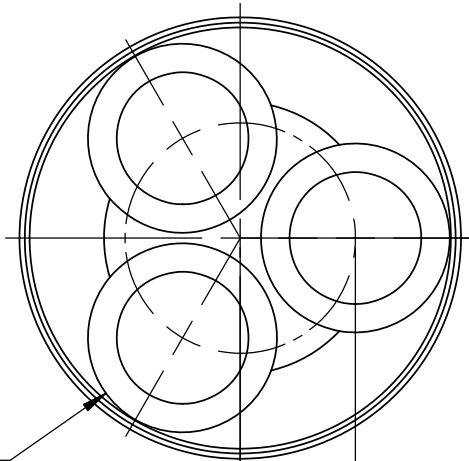
DO NOT SCALE DRAWING

REV 2

This product may be covered by one or more patents or patent applications.  
See <http://www.standardlifters.com/patents.html> for details.

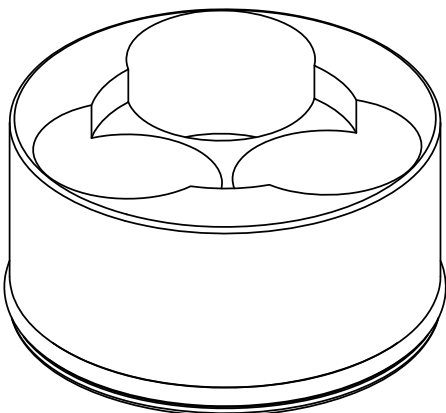
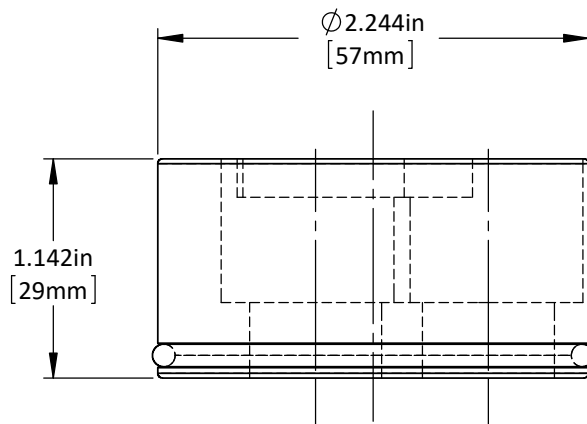
**Locking Collar GK205-Machining**

**Standard Lifters Inc**



Drilled & C'bored For  
 "E" = 5/8" SHCS  
 "M" = M16 SHCS  
 (3) Places Equally  
 Spaced on a  
 $\varnothing$  1.200in [30.48mm]  
 Bolt Circle

.600in Ref.  
 [15.24mm]



DO NOT SCALE DRAWING

REV 1

This product may be covered by one or more patents or patent applications.  
 See <http://www.standardlifters.com/patents.html> for details.

**Locking Collar GK205**

**Standard Lifters Inc**