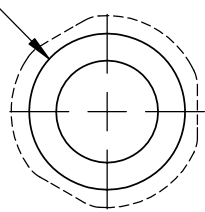
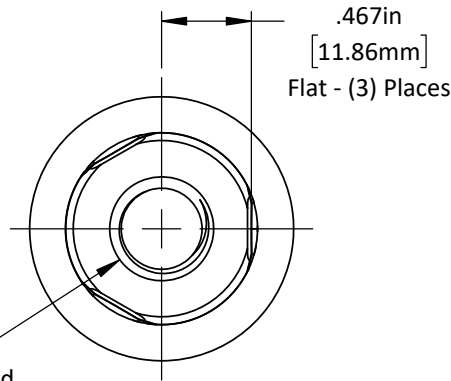


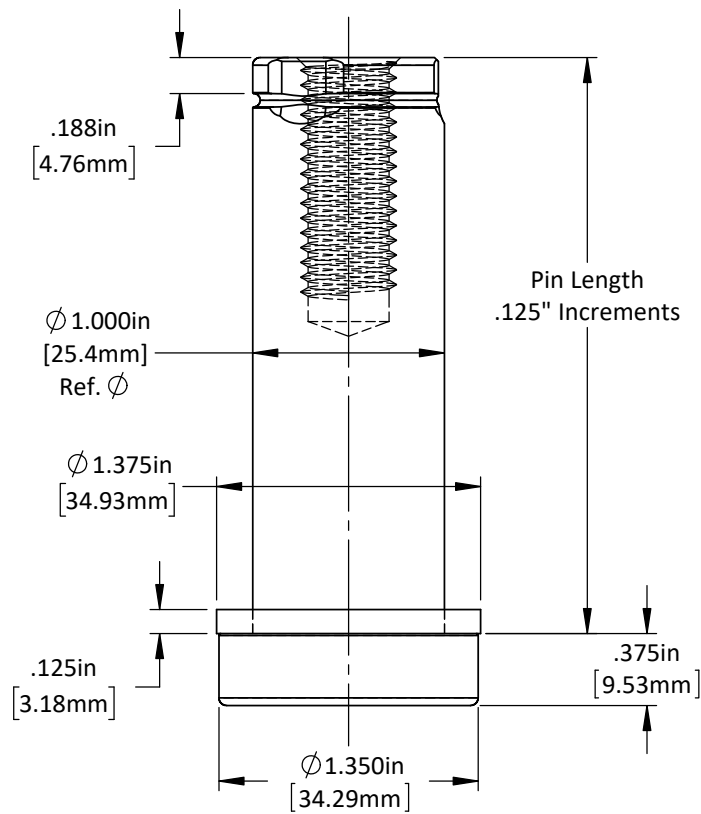
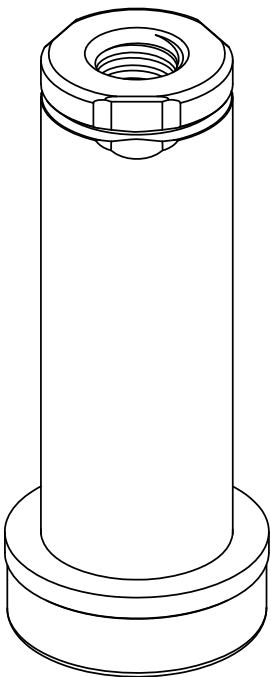
Drill & C'bore For  
 "E" = 1/2" SHCS  
 "M" = M12 SHCS





"E" = 1/2"-13 Tap  
1.12in Dp. Full Thd.

"M" = M12-1.75 Tap  
28mm Dp. Full Thd.



DO NOT SCALE DRAWING

REV 1

This product may be covered by one or more patents or patent applications.  
See <http://www.standardlifters.com/patents.html> for details.

**Guide Pin GK105**

**Standard Lifters Inc**