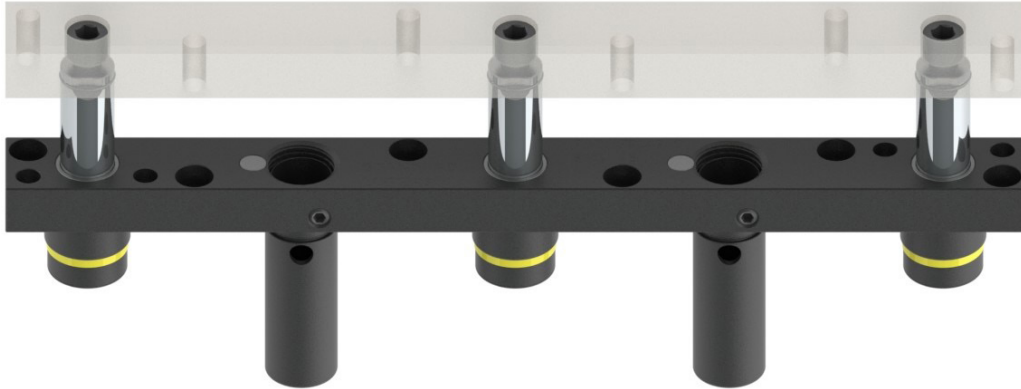


Rail Lifters - Pricing

- Pricing shown below does not include a Top Plate
- A Style Top Plates Sold Separately if desired
- Gas Springs are NOT included, but the size required per lifter is provided when ordering



Series	Base Width	Base Length	List Pricing
SM12	1.25"	5.38"	\$208 - \$216
		9.00"	\$219 - \$228
		14.00"	\$339 - \$354
SM20	2.00"	4.00"	\$215 - \$223
SL19	1.90"	7.00"	\$294 - \$338
		12.00"	\$321 - \$367
		18.00"	\$370 - \$467

Discounts Available

- Tooling Suppliers receive a 5% discount when noting the Stampers name and location at the time of order.
- Stampers receive a 50% discount if the tool is in production and the Stamper purchasing the replacements was noted on the original new build sales order by the tooling supplier. Any non-replacement product is eligible for a 5% discount.

