

Highly Configurable and Adjustable

Lifter Height

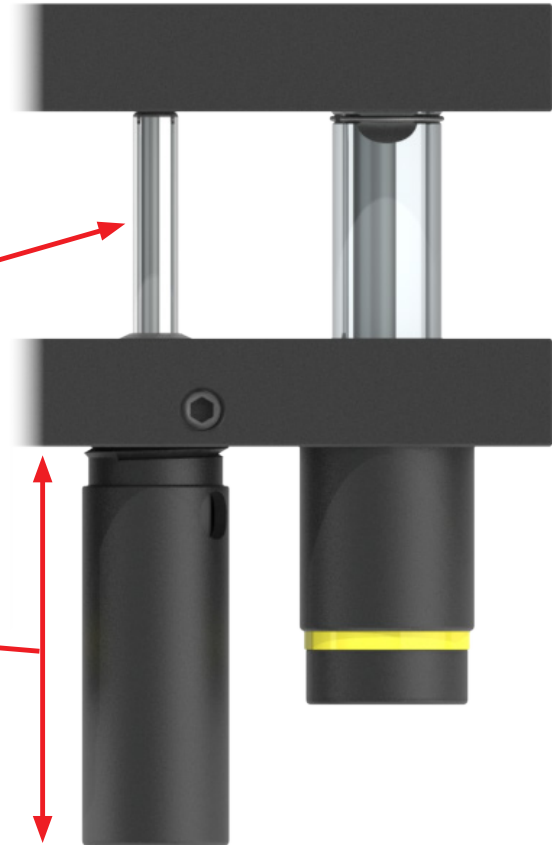
Rail Lifters can be ordered in heights of .125" increments. This provides design flexibility, but does not require the die shoe to be pocketed or shims to be fabricated.

Lifter Travel

Lifter assemblies are configured by height and stroke required, providing two design advantages:

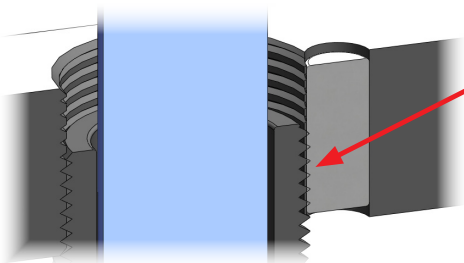
Gas Spring used is the "shortest" needed for the required travel

Minimum Spring Can protrusion below the base



Locking Dowel

Lifter Height can be adjusted anytime using SL's innovative adjustable Spring Can. Simply turn the Spring Can until desired height is reached and then lock it into place using a standard Dowel.



When the dowel is driven into the hole in the Lifter Base, it interrupts the threads on the Spring Can, thus creating a permanently locked assembly.



Drop In Gas Spring

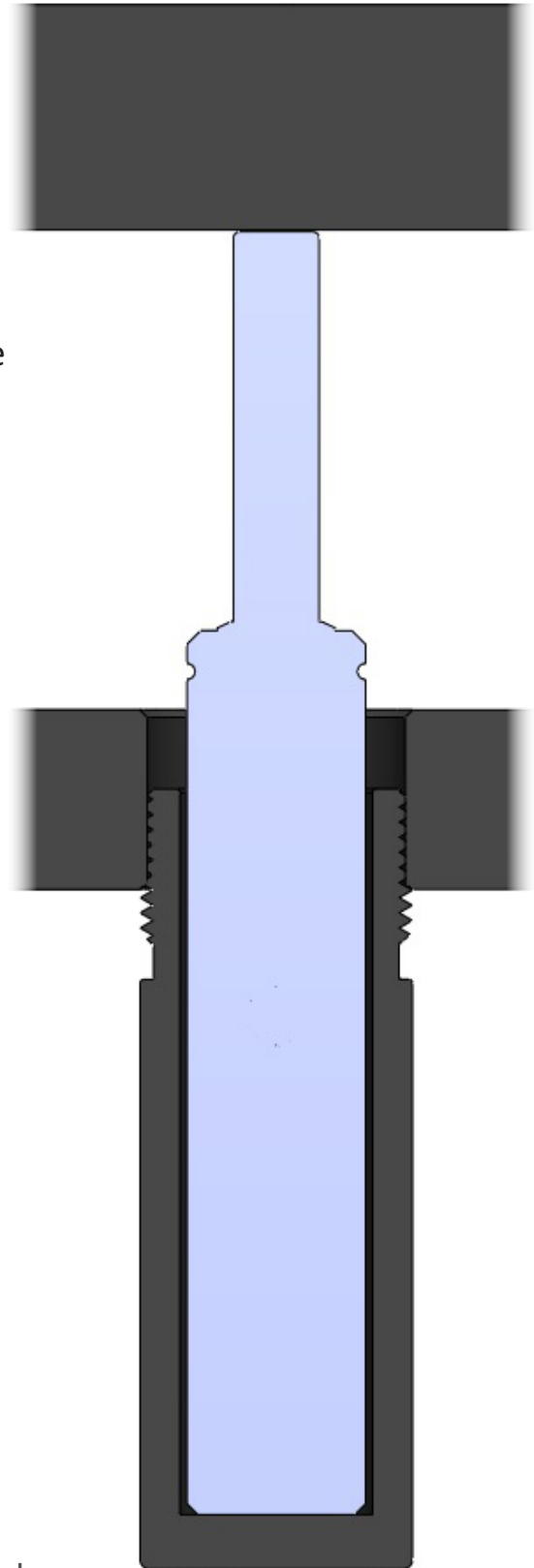
Compatible with All Gas Spring Brands

Use your preferred brand or one that is required for the tool based on customer specifications.

Gas Spring is Easily Replaced

3 Simple Steps:

1. Unscrew the fasteners from one of the Guide Pins and swing the Top Plate out of the way
2. Replace the Gas Spring
3. Swing the Top Plate back over the Base and screw the fasteners back into the Guide Pin







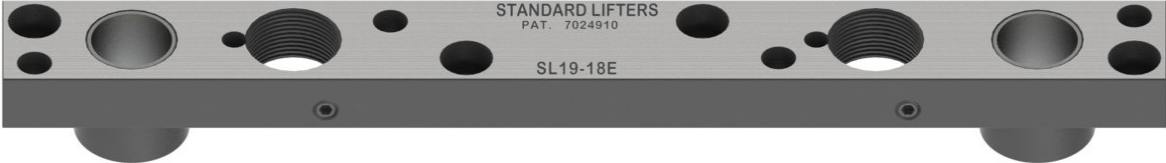


Gas Spring is Protected

The steel Spring Can provides a level of protection for the Gas Spring. In the event of an impact, the Gas Spring is less likely to be damaged.



Rail Lifter Options

Series	Base Lengths Available
<p style="color: red; font-weight: bold; font-size: 1.2em;">SM12</p>	 <p style="color: red; font-weight: bold;">1.25" Wide 5.38" Long</p>
	 <p style="color: red; font-weight: bold;">1.25" Wide 9.00" Long</p>
	 <p style="color: red; font-weight: bold;">1.25" Wide 14.00" Long</p>
<p style="color: red; font-weight: bold; font-size: 1.2em;">SM20</p>	 <p style="color: red; font-weight: bold;">2.00" Wide 4.00" Long</p>
<p style="color: red; font-weight: bold; font-size: 1.2em;">SL19</p>	 <p style="color: red; font-weight: bold;">1.90" Wide 7.00" Long</p>
	 <p style="color: red; font-weight: bold;">1.90" Wide 12.00" Long</p>
	 <p style="color: red; font-weight: bold;">1.90" Wide 18.00" Long</p>

