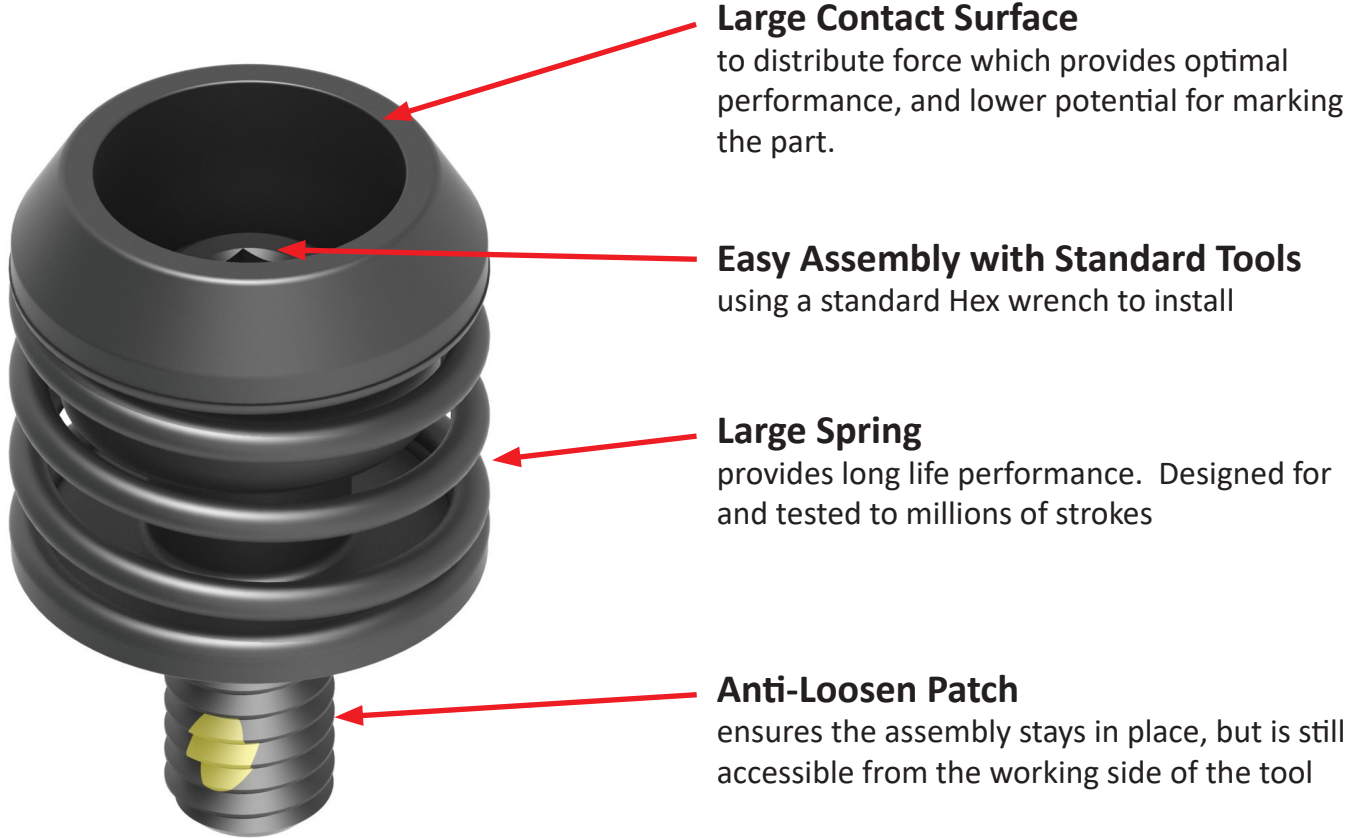


Innovative Design



Large Contact Surface

to distribute force which provides optimal performance, and lower potential for marking the part.

Easy Assembly with Standard Tools

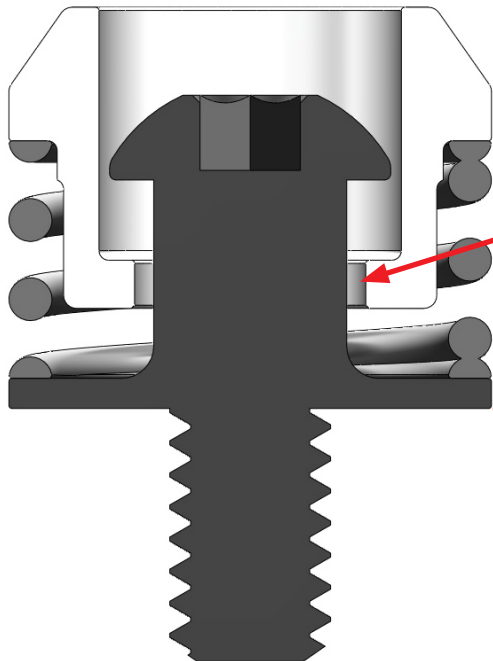
using a standard Hex wrench to install

Large Spring

provides long life performance. Designed for and tested to millions of strokes

Anti-Loosen Patch

ensures the assembly stays in place, but is still accessible from the working side of the tool



No Alterations Needed

such as grinding Ejector Pins to length, or cutting springs

Tippable / Flexible

clearances in the assembly allow the stripper to tip. This helps prevent damage to the assembly, even if it is bumped during the construction process

Complete Assembly - No Loose Parts

no loose springs or set screws that can be easily lost when assembling



Product Options & Specs

Series	Outside Diameter	Minimum Compressed Height	Minimum Overall Height	Thread Size	Maximum Travel	Force Range (lbs)	Max Torque (in.-lbs.)
SE	.750"	.625"	1.02"	1/4-20	.125"	6-12	65
	.875"	.688"	1.26"	5/16-18	.156"	13-19	100
	1.00"	.750"	1.25"	3/8-16	.188"	14-20	180
	20mm	15.88mm	24.8mm	M6-1.0	3.2mm	6-12	45
	22.5mm	17.48mm	31.6mm	M8-1.25	4mm	13-19	105
	25mm	19.05mm	31.4mm	M10-1.5	4.8mm	14-20	210
PE	1.00"	1.125"	1.76"	3/8-16	.625"	9-30	180
	25mm	28.58mm	41.38mm	M10-1.5	16mm	9-30	210

