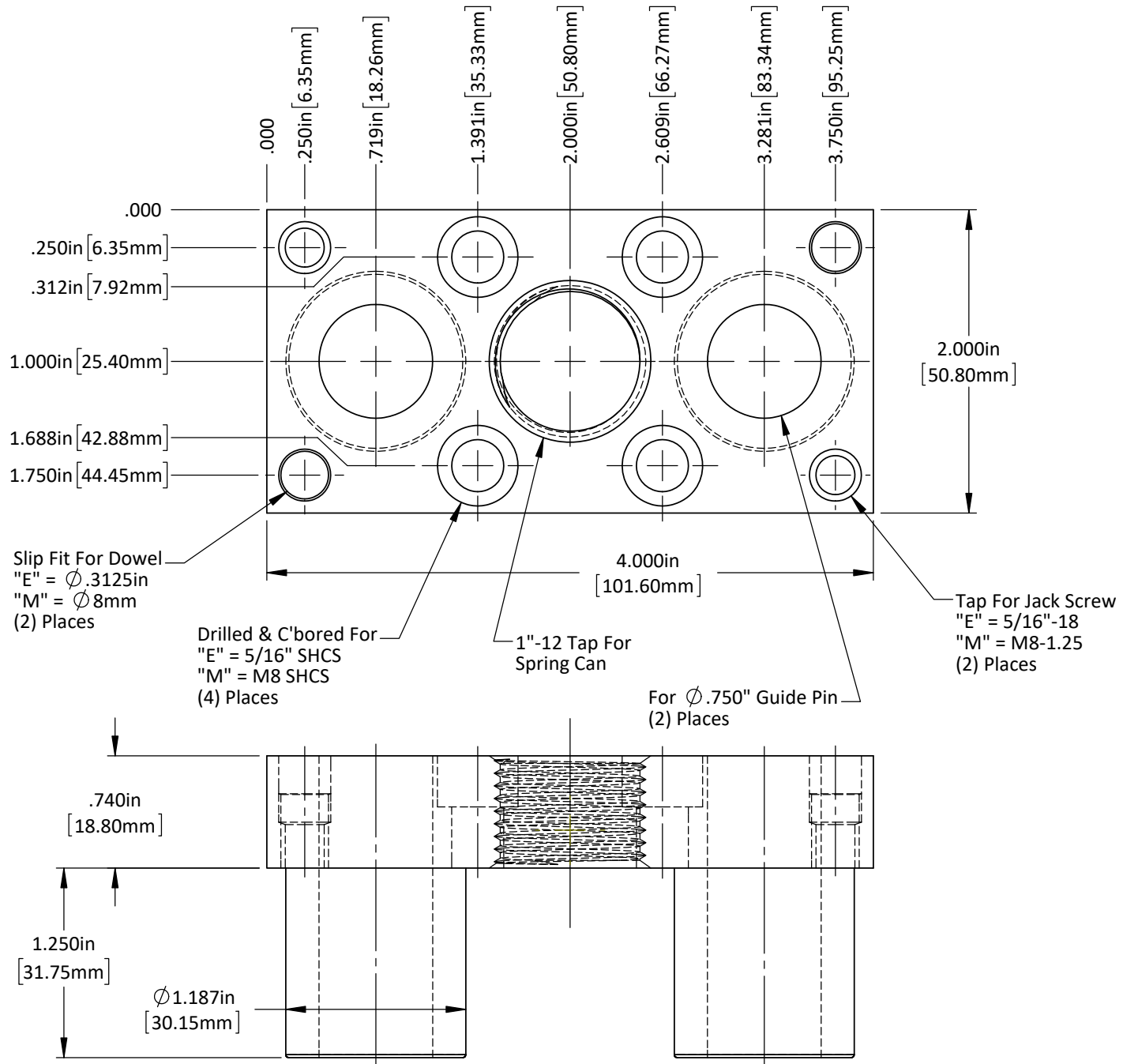


DO NOT SCALE DRAWING | REV 1

This product may be covered by one or more patents or patent applications.
See <http://www.standardlifters.com/patents.html> for details.

Base-SM20-4-Machining
Standard Lifters Inc



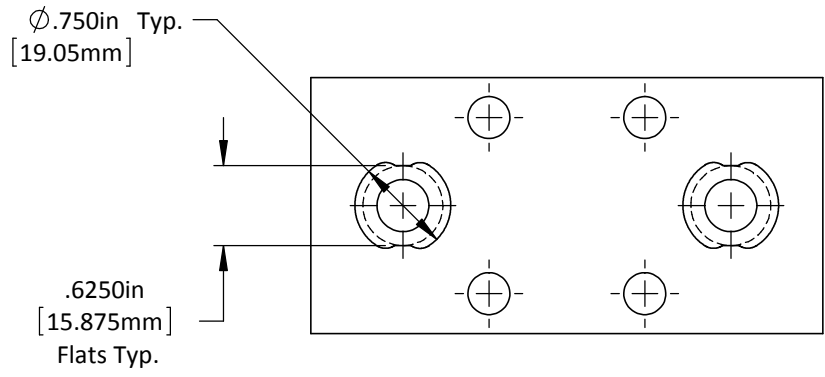
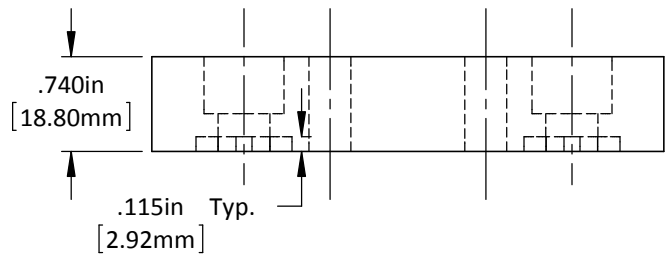
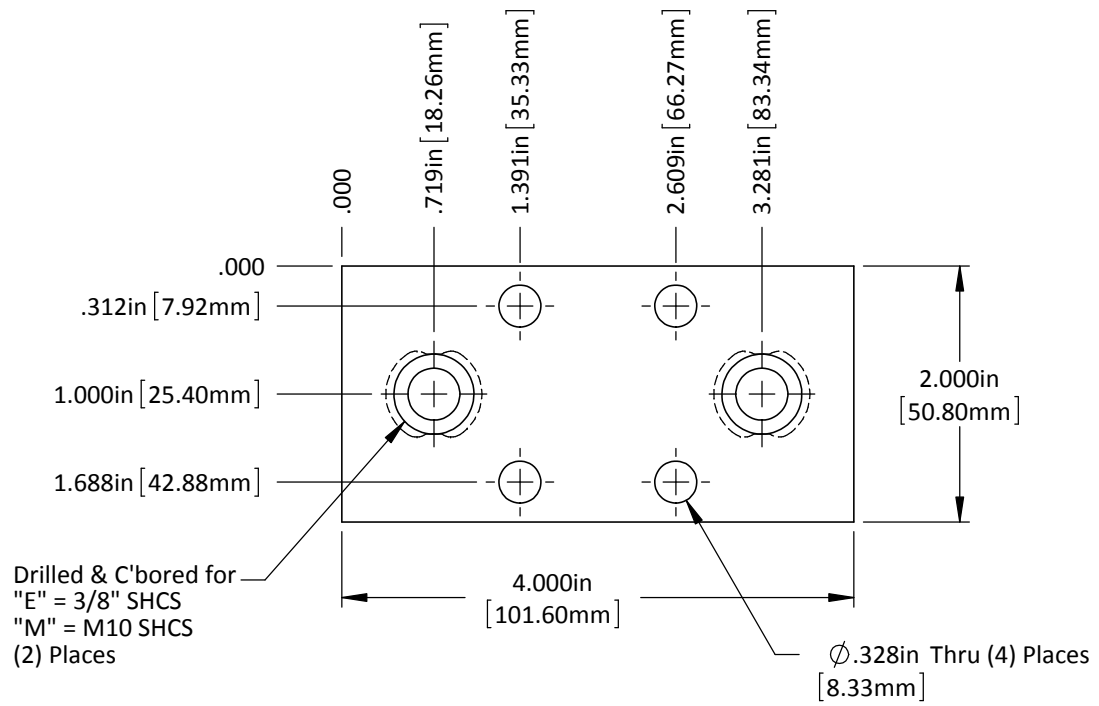
DO NOT SCALE DRAWING

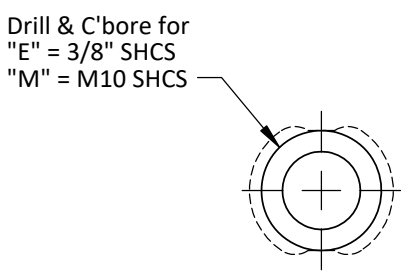
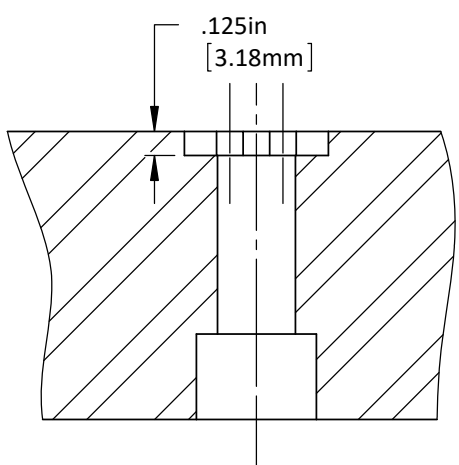
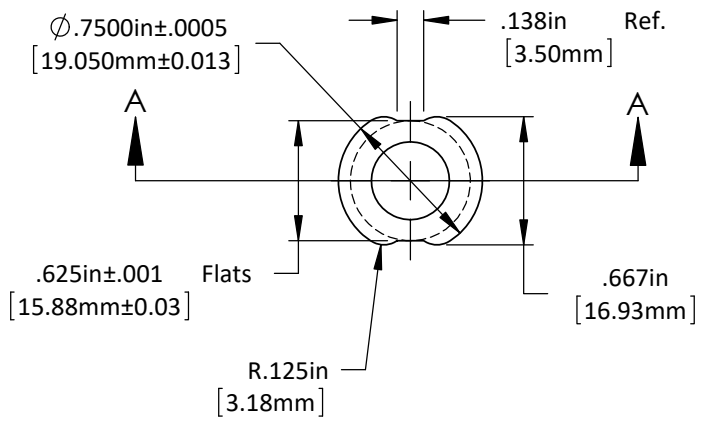
REV 1

This product may be covered by one or more patents or patent applications.
 See <http://www.standardlifters.com/patents.html> for details.

Base-SM20-4-1.25

Standard Lifters Inc



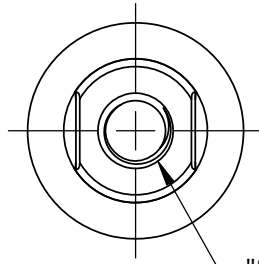


DO NOT SCALE DRAWING REV 1

This product may be covered by one or more patents or patent applications.
 See <http://www.standardlifters.com/patents.html> for details.

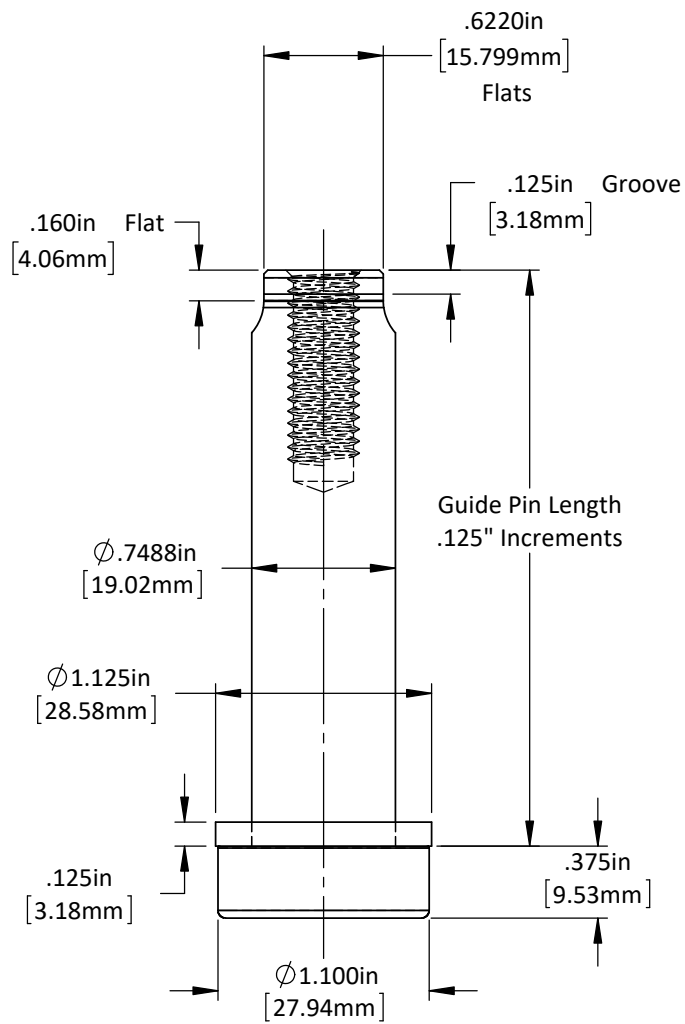
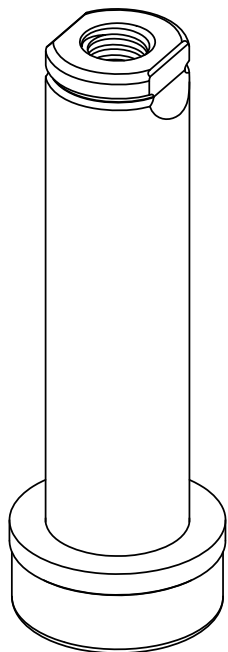
Guide Pin GK75-Machining

Standard Lifters Inc



"E" = 3/8-16 Tap
1.00in Dp.

"M" = M10-1.5 Tap
25mm Dp.



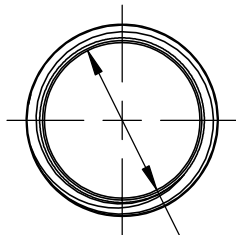
DO NOT SCALE DRAWING

REV 1

This product may be covered by one or more patents or patent applications.
See <http://www.standardlifters.com/patents.html> for details.

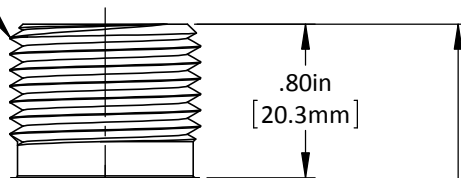
Guide Pin GK75

Standard Lifters Inc

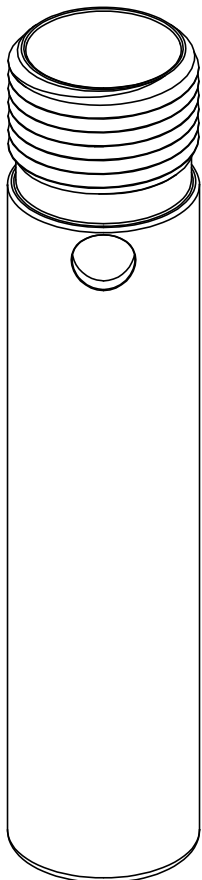


$\varnothing .810\text{in}$
[20.57mm]

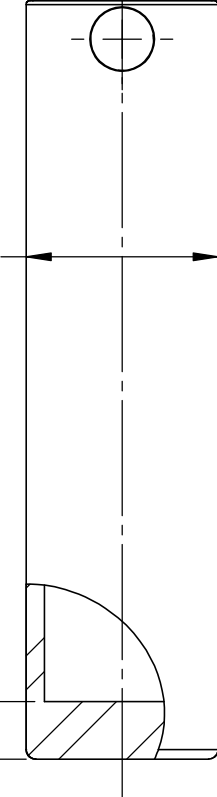
1"-12 Thread



.80in
[20.3mm]



$\varnothing 1.000\text{in}$
[25.40mm]



Spring Can
Overall Length
1.75" Min. - 9.25" Max.
.375" Increments

.300in
[7.62mm]

DO NOT SCALE DRAWING

REV 1

This product may be covered by one or more patents or patent applications.
See <http://www.standardlifters.com/patents.html> for details.

Spring Can-MSR75

STANDARD LIFTERS INC