

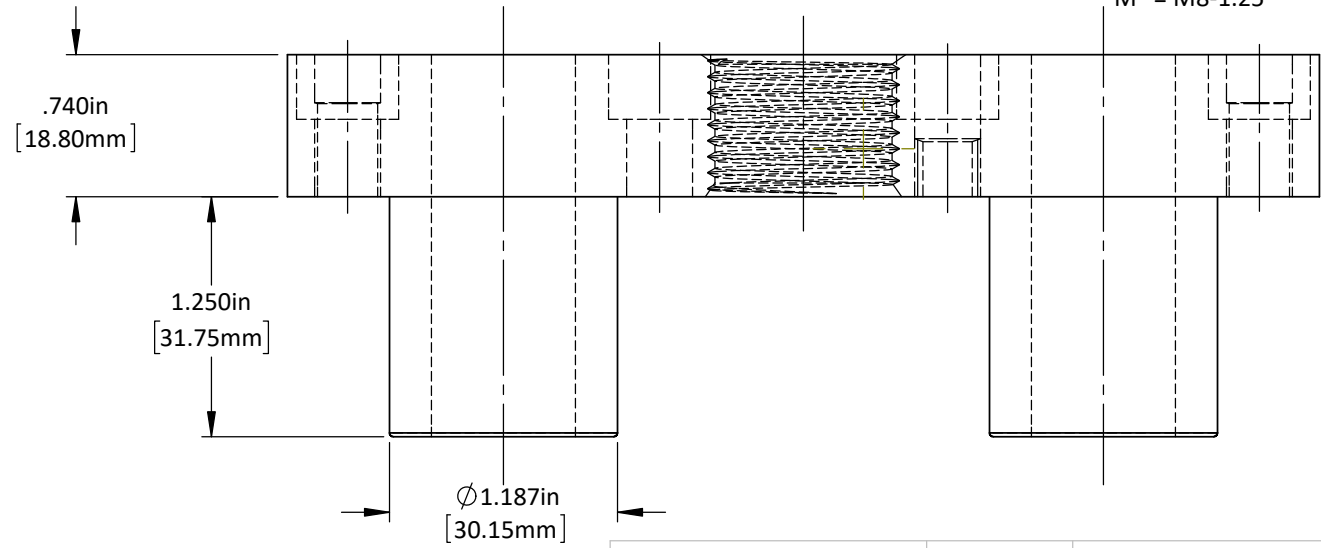
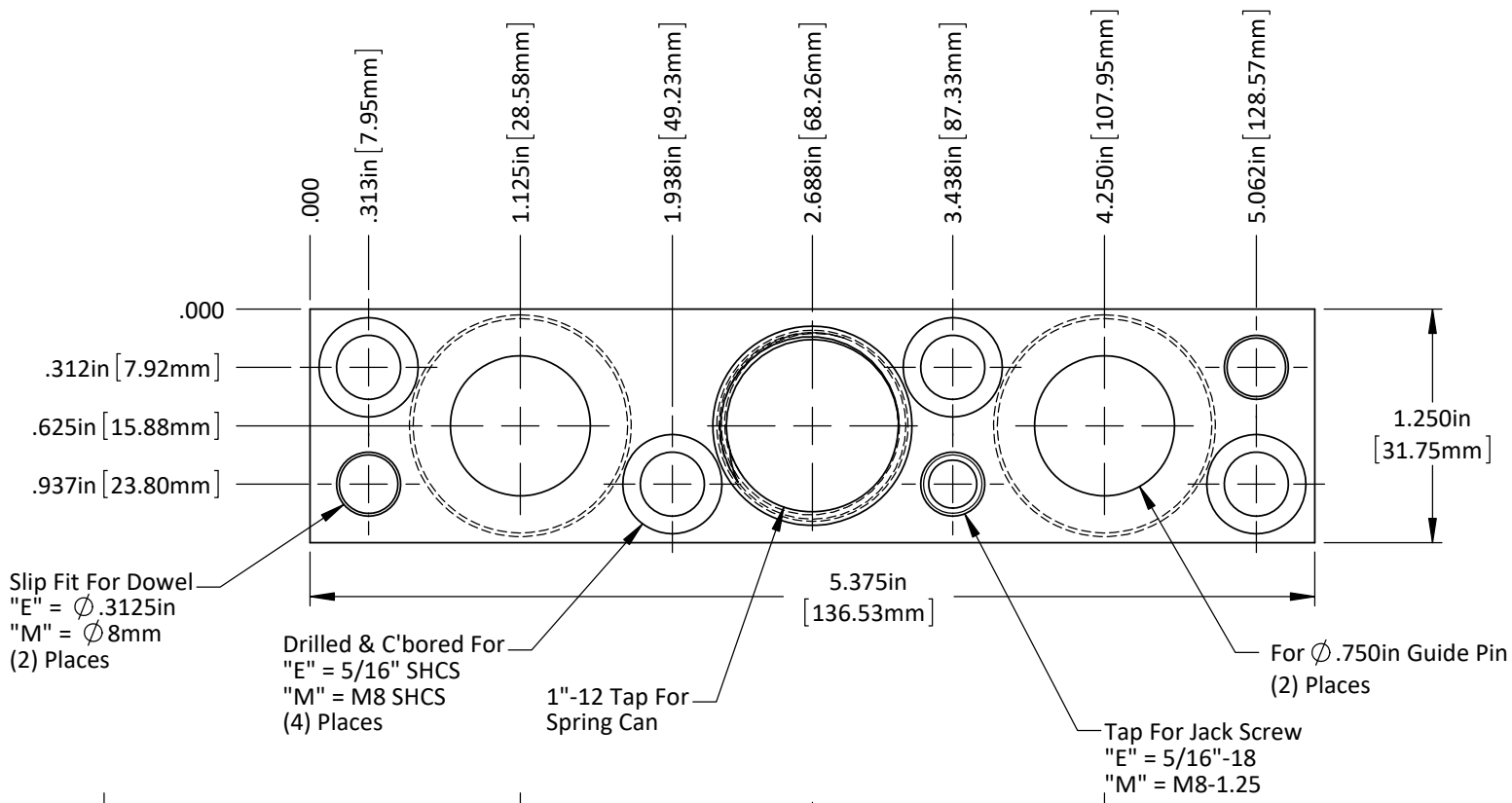
DO NOT SCALE DRAWING

REV 2

This product may be covered by one or more patents or patent applications.  
 See <http://www.standardlifters.com/patents.html> for details.

**Base-SM12-5.38-Machining**

**Standard Lifters Inc**

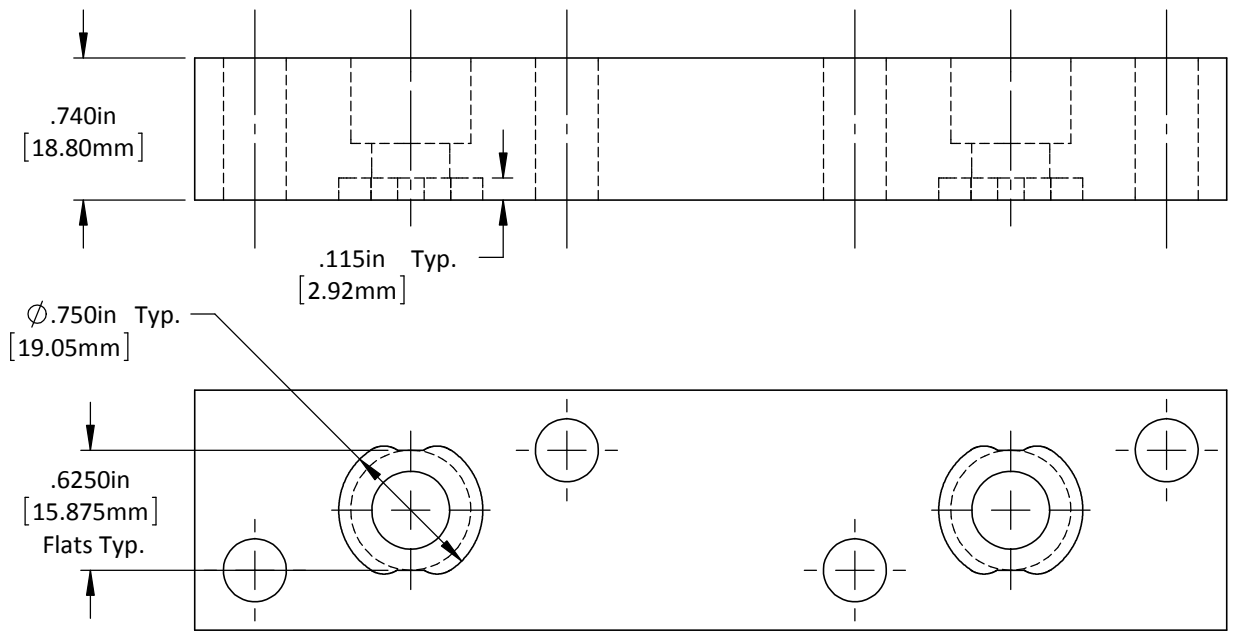
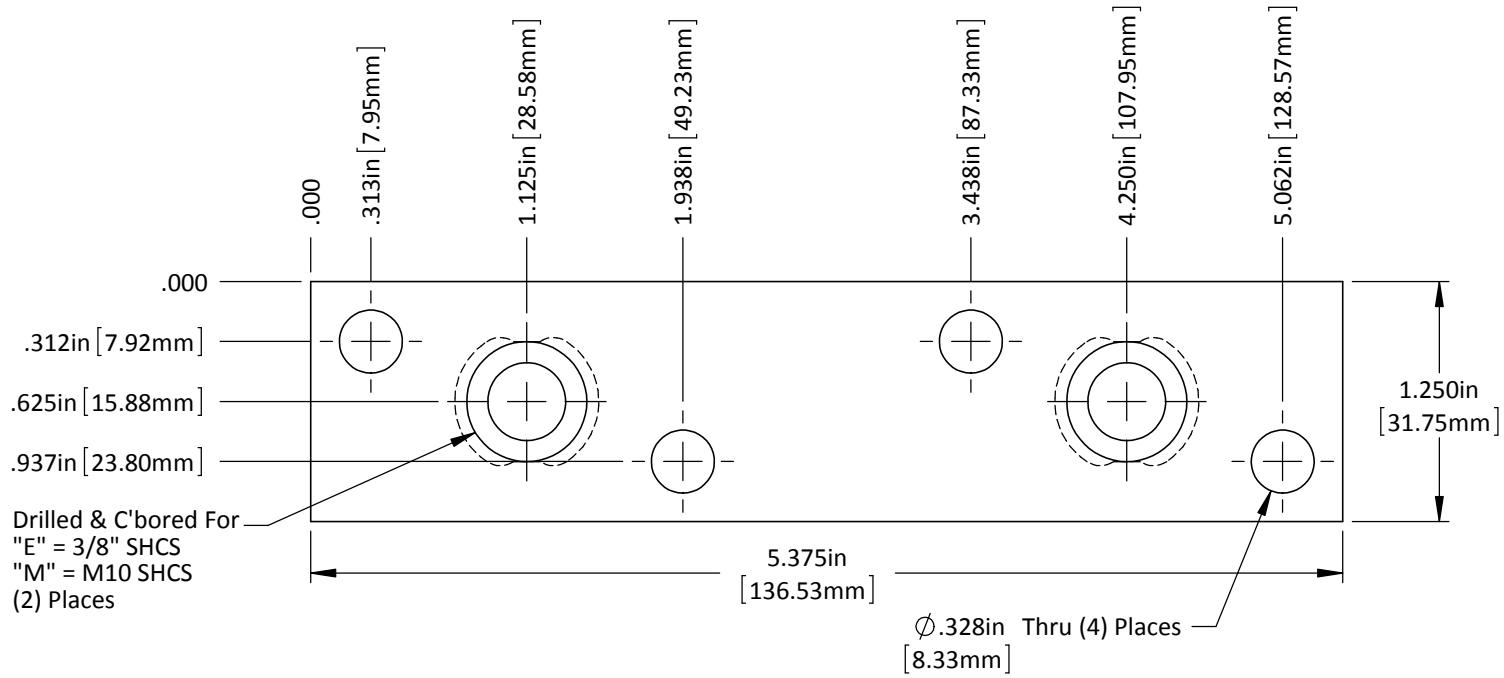


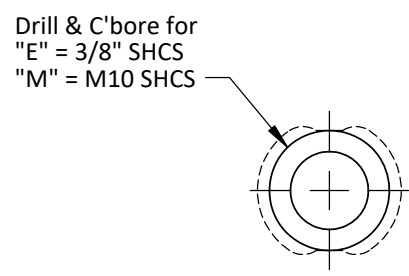
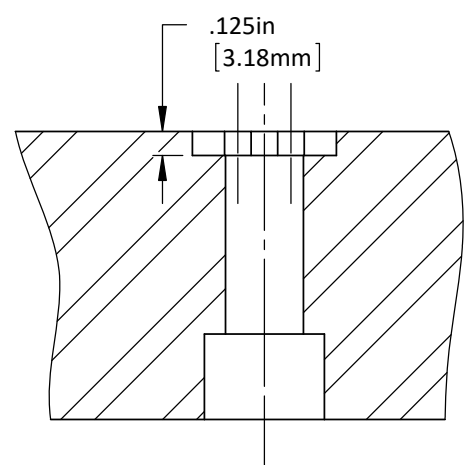
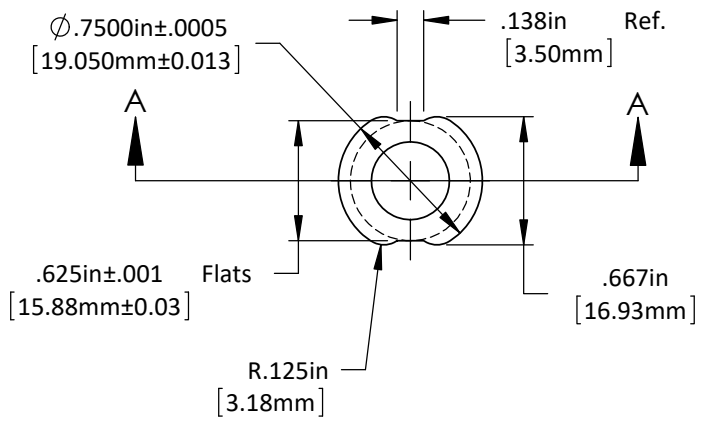
DO NOT SCALE DRAWING    REV 1

This product may be covered by one or more patents or patent applications.  
See <http://www.standardlifters.com/patents.html> for details.

**Base-SM12-5.38-1.25**

**Standard Lifters Inc**



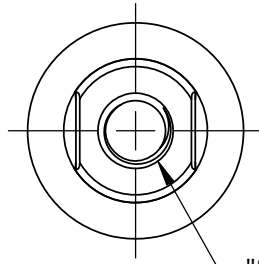


DO NOT SCALE DRAWING    REV 1

This product may be covered by one or more patents or patent applications.  
 See <http://www.standardlifters.com/patents.html> for details.

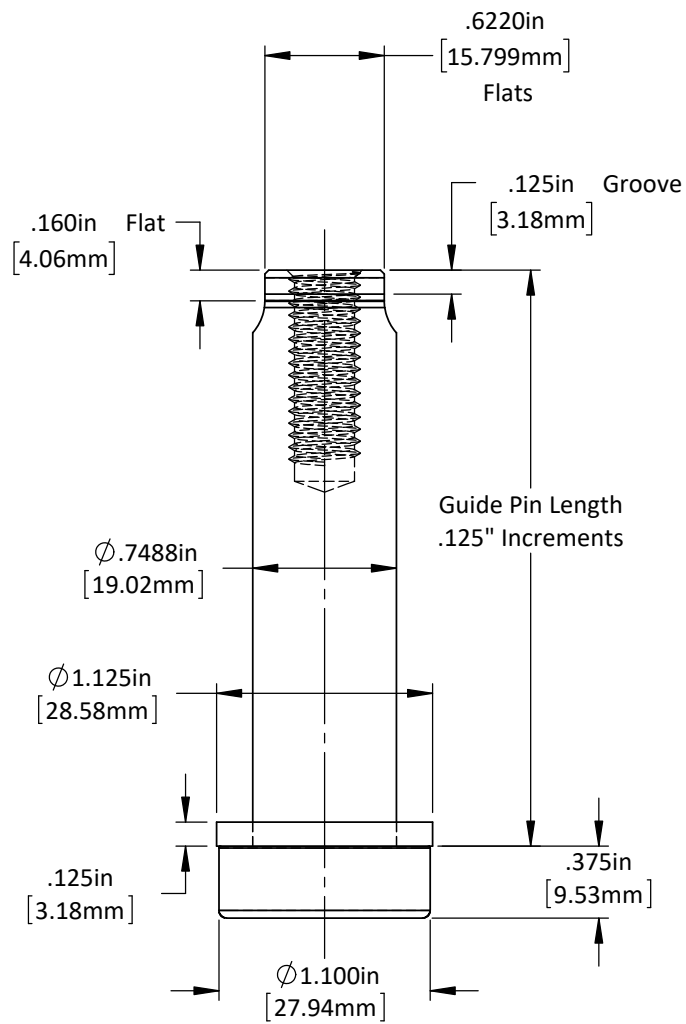
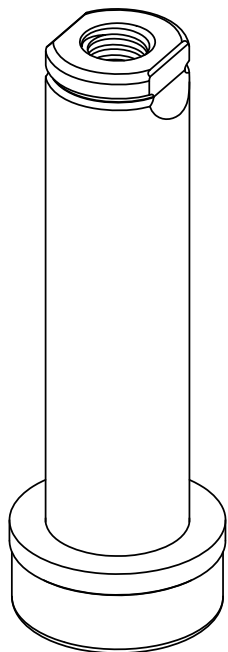
**Guide Pin GK75-Machining**

**Standard Lifters Inc**



"E" = 3/8-16 Tap  
1.00in Dp.

"M" = M10-1.5 Tap  
25mm Dp.



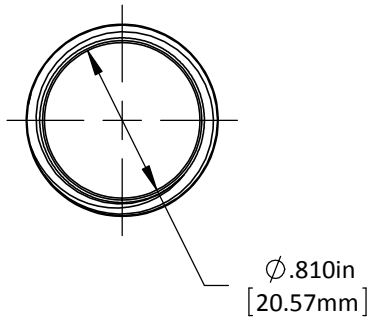
DO NOT SCALE DRAWING

REV 1

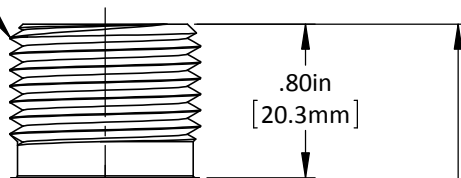
This product may be covered by one or more patents or patent applications.  
See <http://www.standardlifters.com/patents.html> for details.

**Guide Pin GK75**

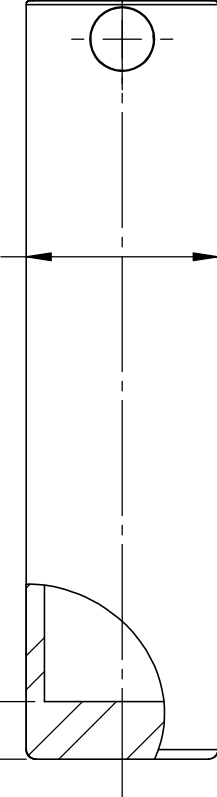
**Standard Lifters Inc**



1"-12 Thread

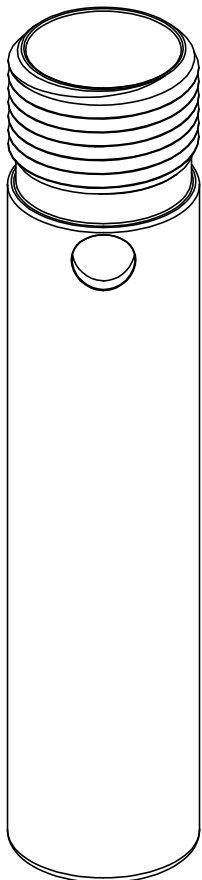
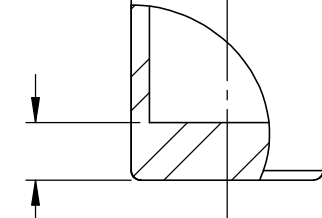


$\phi 1.000\text{in}$   
[25.40mm]



Spring Can  
Overall Length  
1.75" Min. - 9.25" Max.  
.375" Increments

$.300\text{in}$   
[7.62mm]



DO NOT SCALE DRAWING    REV 1  
 This product may be covered by one or more patents or patent applications.  
 See <http://www.standardlifters.com/patents.html> for details.

**Spring Can-MSR75**  
**STANDARD LIFTERS INC**