

$\varnothing .50\text{in}$  Drill Thru  
[12.7mm]

.630in  
[16mm]

A

A

3/8-16 Tap

$\varnothing .640\text{in}\pm.010$   
[16.26mm $\pm$ 0.25]

**Do Not Slot Fastener Holes**  
**Slotting the Fastener Pocket**  
**Reduces Support to the Pilot Body**

$\varnothing .750\text{in}^{+.0008}_{-.0000}$   
[19.050mm $^{+0.020}_0$ ]

1.250in  
[31.75mm]  
Min.

.625in Ref.  
[15.88mm]

.625in $\pm.002$   
[15.88mm $\pm$ 0.05]

R.030in Max.  
[0.76mm]

SECTION A-A

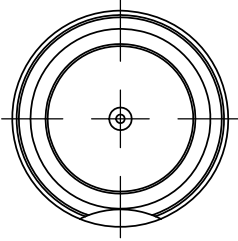
DO NOT SCALE DRAWING

REV 1

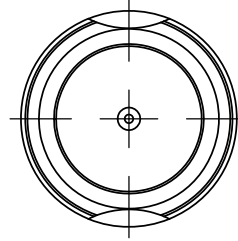
This product may be covered by one or more patents or patent applications.  
See <http://www.standardlifters.com/patents.html> for details.

**Pilot-PA-T-.625-.125-F-Machining**

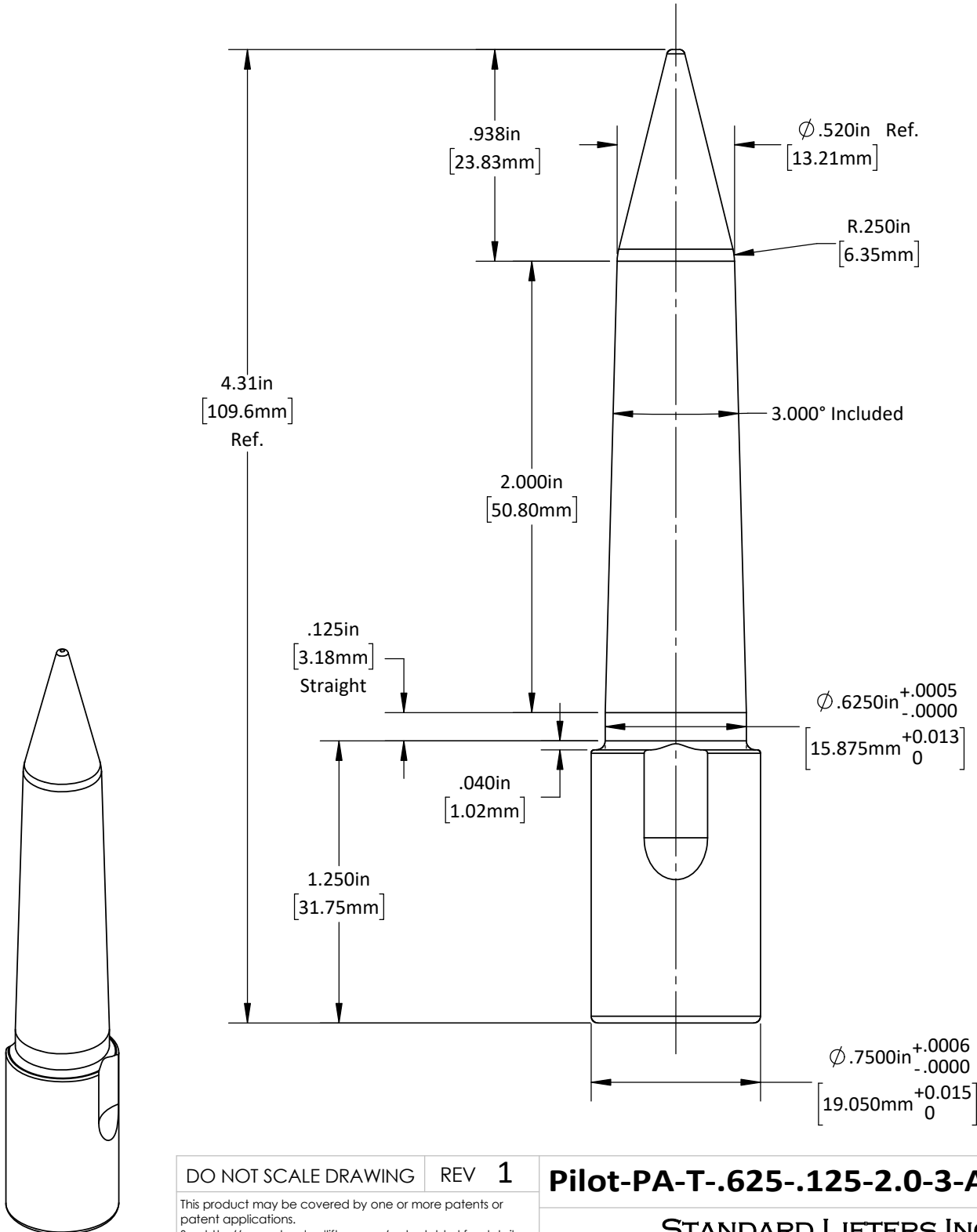
**STANDARD LIFTERS INC**



**1 Hold Down**  
**PA-T-.625-.125-2.0-3-A-F1**



**2 Hold Downs**  
**PA-T-.625-.125-2.0-3-A-F2**



DO NOT SCALE DRAWING    REV 1  
 This product may be covered by one or more patents or patent applications.  
 See <http://www.standardlifters.com/patents.html> for details.

**Pilot-PA-T-.625-.125-2.0-3-A-F1 / F2**  
**STANDARD LIFTERS INC**