

\*Recommended Minimum Hole Size to be  
Cylinder Body Diameter +1mm [.04"]

"E" = 5/16"-18 Tap X .62in Dp.  
"M" = M8-1.25 Tap X 16mm Dp.

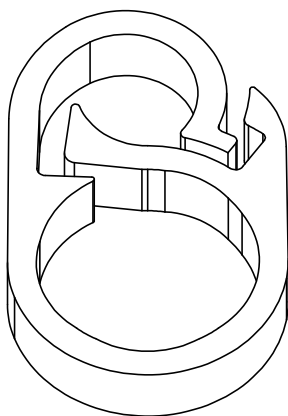
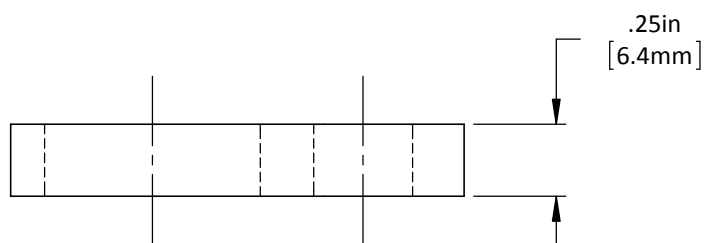
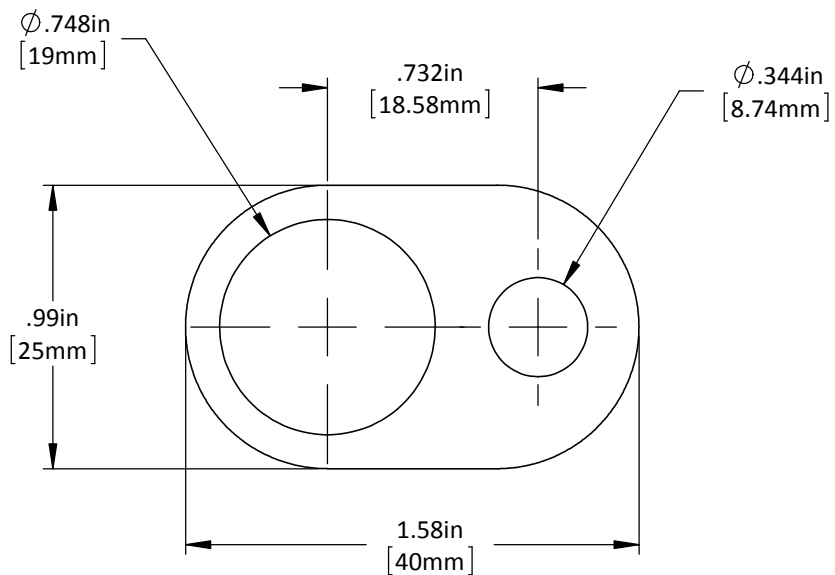
DO NOT SCALE DRAWING

REV 1

This product may be covered by one or more patents or  
patent applications.  
See <http://www.standardlifters.com/patents.html> for details.

**Gas Spring Clamp-GSC-19-A-Machining**

**STANDARD LIFTERS INC**



DO NOT SCALE DRAWING

REV 1

This product may be covered by one or more patents or patent applications.  
See <http://www.standardlifters.com/patents.html> for details.

**Gas Spring Clamp-GSC-19-A**

**STANDARD LIFTERS INC**