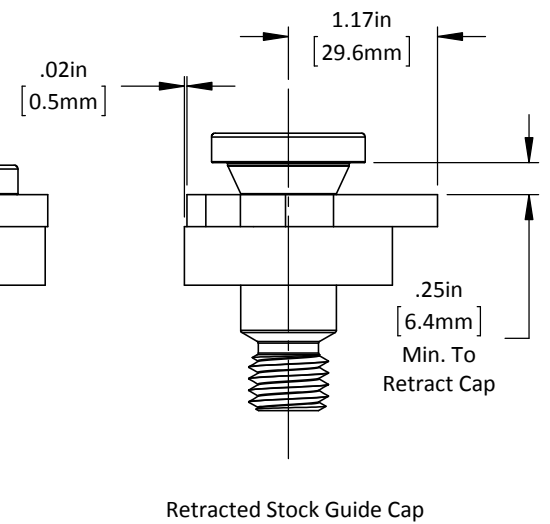
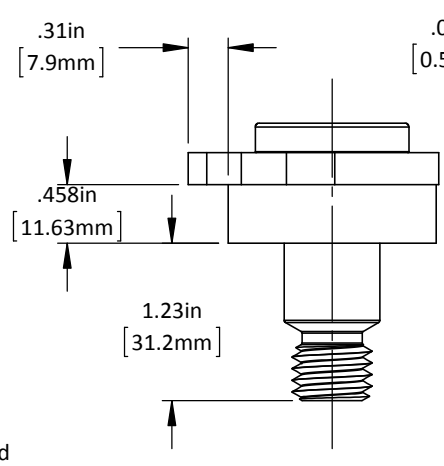
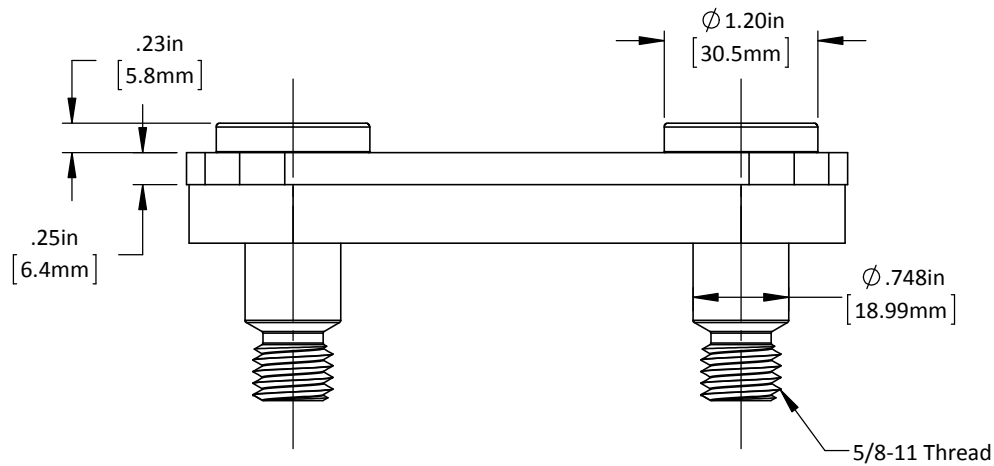
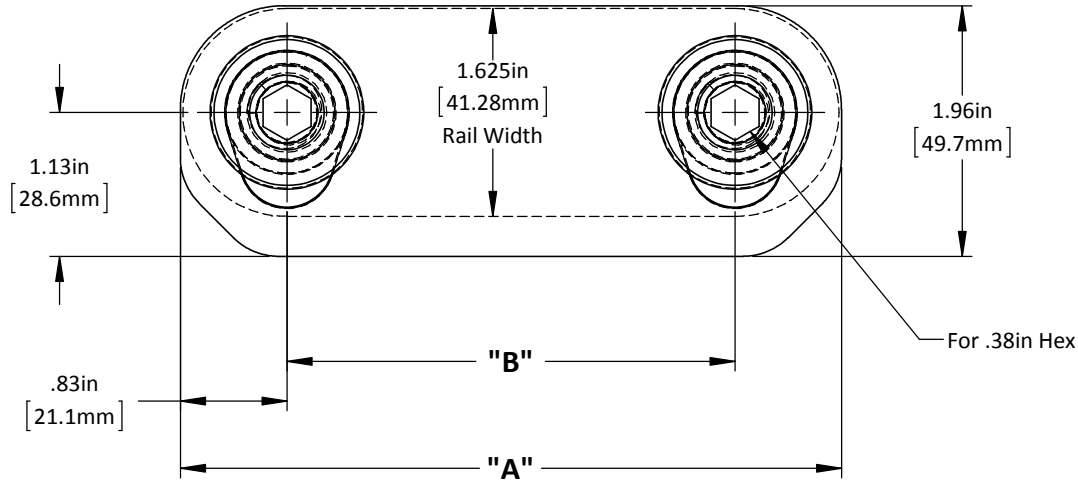


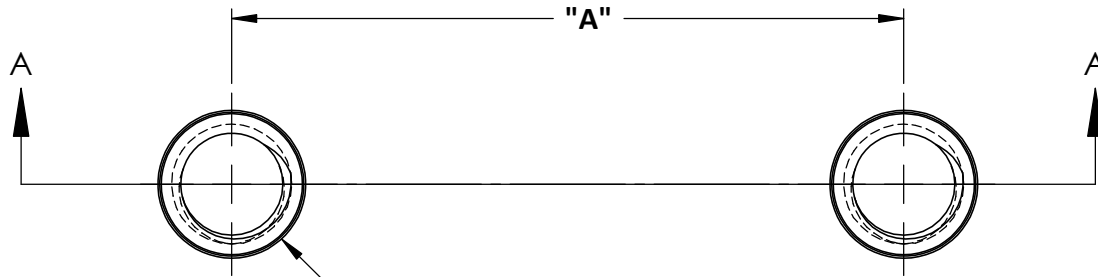
Product Number	"A" Dim.	"B" Dim.
SG-S-E-H-1.96-5.17	5.17in [131.2mm]	3.500in [88.9mm]
SG-S-E-H-1.96-6.92	6.92in [175.7mm]	5.250in [133.35mm]
SG-S-E-H-1.96-8.67	8.67in [220.1mm]	7.000in [177.8mm]
SG-S-E-H-1.96-10.42	10.42in [264.6mm]	8.750in [222.25mm]
SG-S-E-H-1.96-12.17	12.17in [309mm]	10.500in [266.8mm]
SG-S-E-H-1.96-15.67	15.67in [397.9mm]	14.000in [355.6mm]



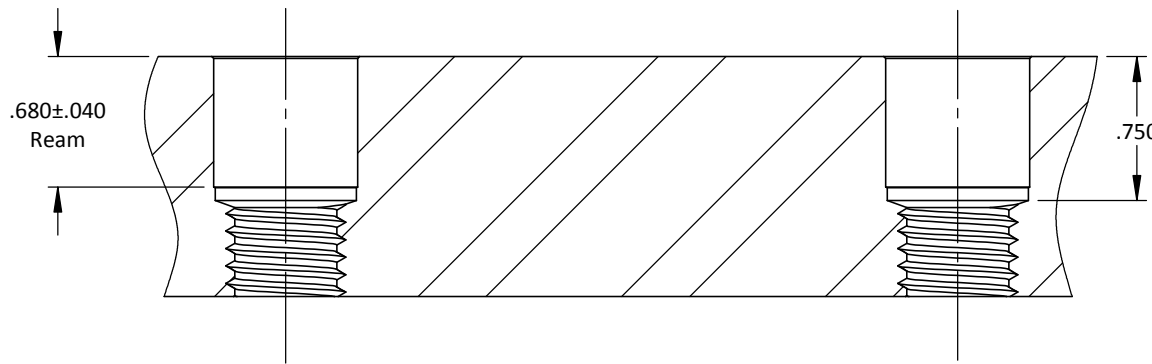
DO NOT SCALE DRAWING REV 1
 This product may be covered by one or more patents or patent applications.
 See <http://www.standardlifters.com/patents.html> for details.

Stock Guide-SG-S-E-H-1.96
STANDARD LIFTERS INC

Product Number	"A" Dim.
SG-S-E-H-1.96-5.17	3.500in [88.9mm]
SG-S-E-H-1.96-6.92	5.250in [133.35mm]
SG-S-E-H-1.96-8.67	7.000in [177.8mm]
SG-S-E-H-1.96-10.42	8.750in [222.25mm]
SG-S-E-H-1.96-12.17	10.500in [266.8mm]
SG-S-E-H-1.96-15.67	14.000in [355.6mm]



Ream Drill (Ref. ϕ .734)
 Tap Drill (Ref. ϕ .531)
 ϕ .7500 Ream
 5/8-11 Tap



.750 Ream Drill Depth
 *Reference to Drill Point
 118° - .971 Dp.
 135° - .902 Dp.
 140° - .884 Dp.

DO NOT SCALE DRAWING	REV 2	Stock Guide-SG-S-E-H-1.96-Machining
This product may be covered by one or more patents or patent applications. See http://www.standardlifters.com/patents.html for details.		