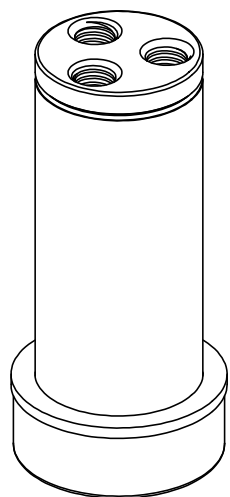
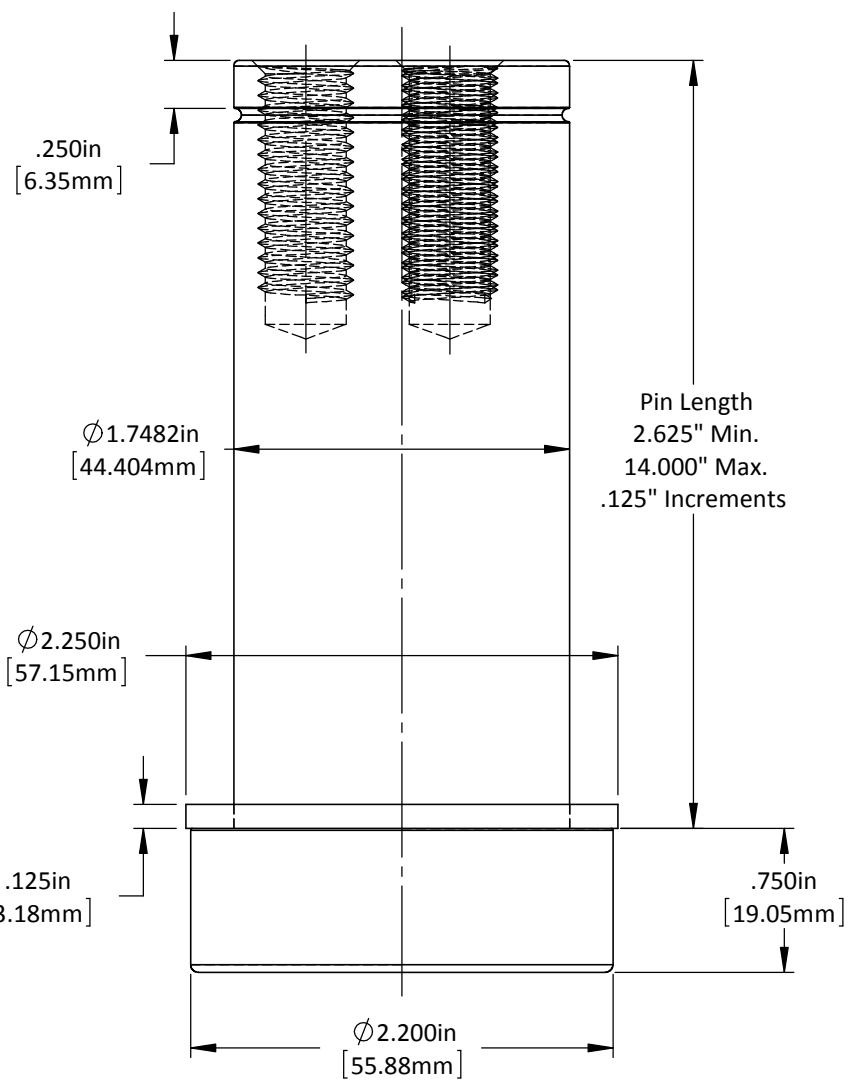


"E" = 1/2"-13 Tap  
 1.25in Dp.  
 "M" = M12-1.75 Tap  
 32mm Dp.  
 (3) Places Equally Spaced  
 On a  $\phi$  1.000in [25.4mm]  
 Bolt Circle

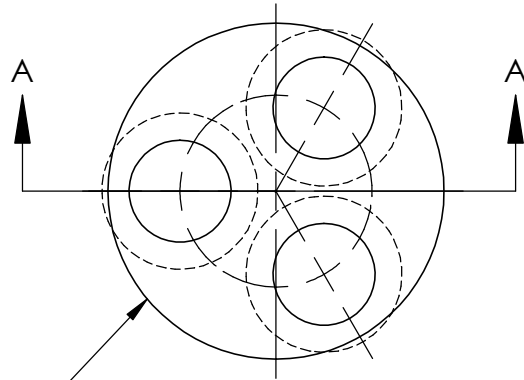


DO NOT SCALE DRAWING    REV 1

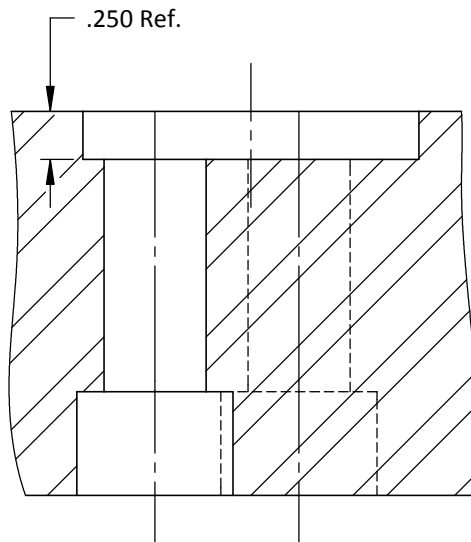
This product may be covered by one or more patents or patent applications.  
 See <http://www.standardlifters.com/patents.html> for details.

**Guide Pin GK180**

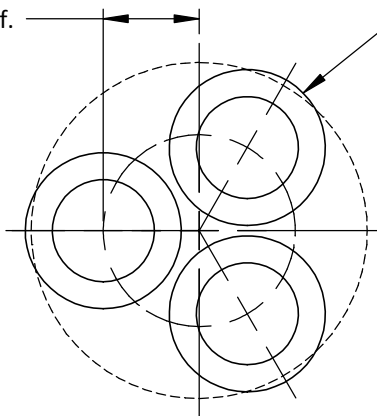
**STANDARD LIFTERS INC**



$\varnothing 1.7500\text{in} \pm .0005 \text{ X } .250\text{in Dp.}$   
 $[\varnothing 44.450\text{mm} \pm .013 \text{ X } 6.35\text{mm Dp.}]$



.500 Ref.



Drill & C'bore For  
 "E" = 1/2" SHCS  
 "M" = M12 SHCS  
 (3) Places Equally  
 Spaced on a  
 $\varnothing 1.000\text{in}$  [25.40mm]  
 Bolt Circle

DO NOT SCALE DRAWING

REV 1

This product may be covered by one or more patents or  
 patent applications.  
 See <http://www.standardlifters.com/patents.html> for details.

**Guide Pin GK180-Machining**

**STANDARD LIFTERS INC**