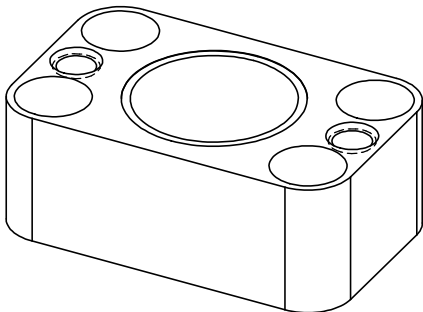
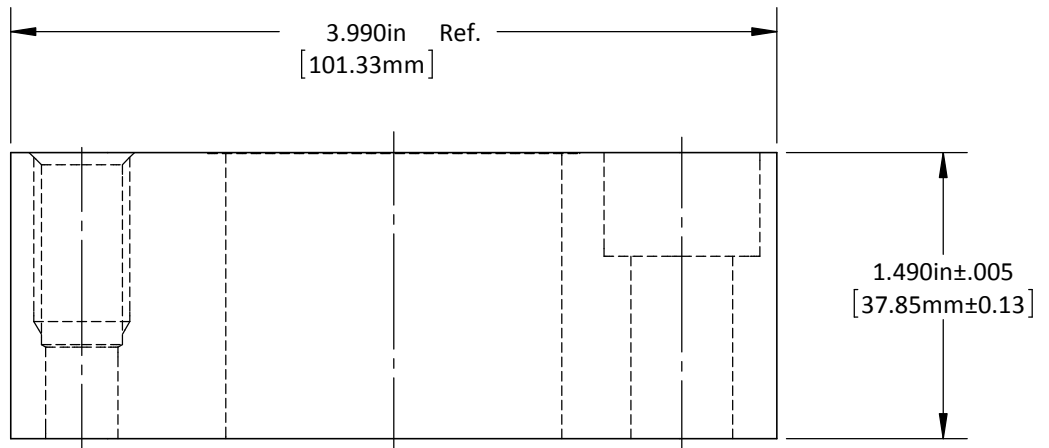


"E" = Slip Fit For 3/8" Dowel  
 1/2"-13 Tap X .88" Dp.  
 "M" = Slip Fit For 10mm Dowel  
 M12-1.75 Tap X 22mm Dp.  
 (2) Places

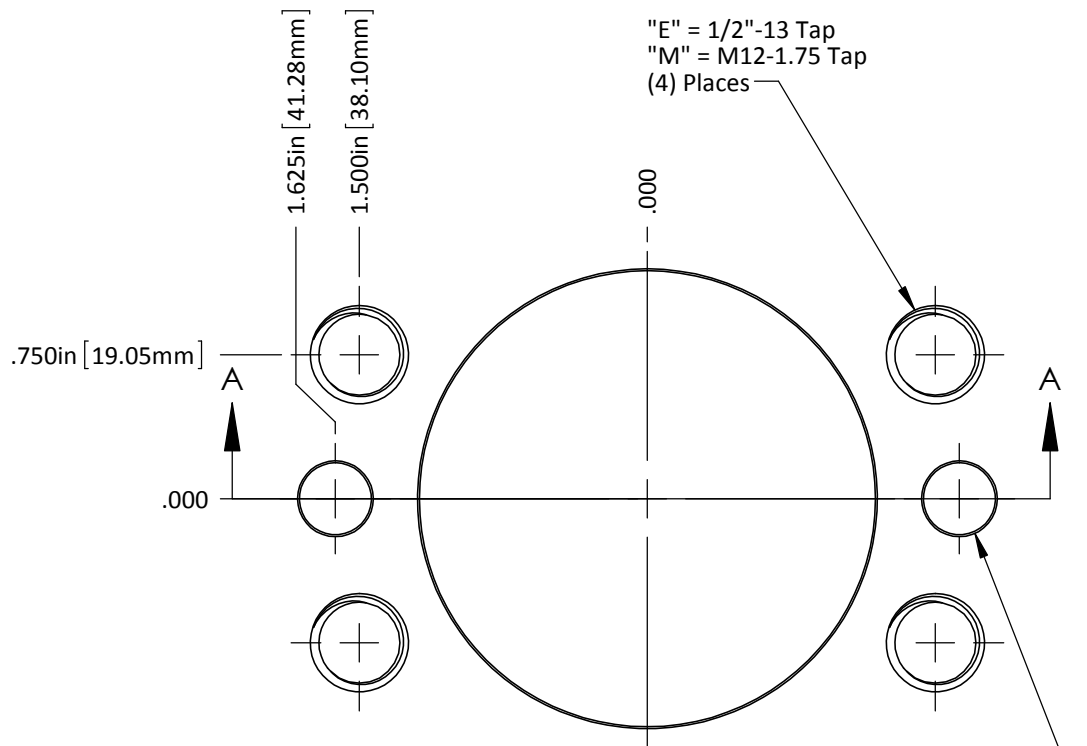
Ø1.750in Ref.  
 [44.45mm]

Drilled & C'bored For  
 "E" = 1/2" SHCS  
 "M" = M12 SHCS  
 (4) Places

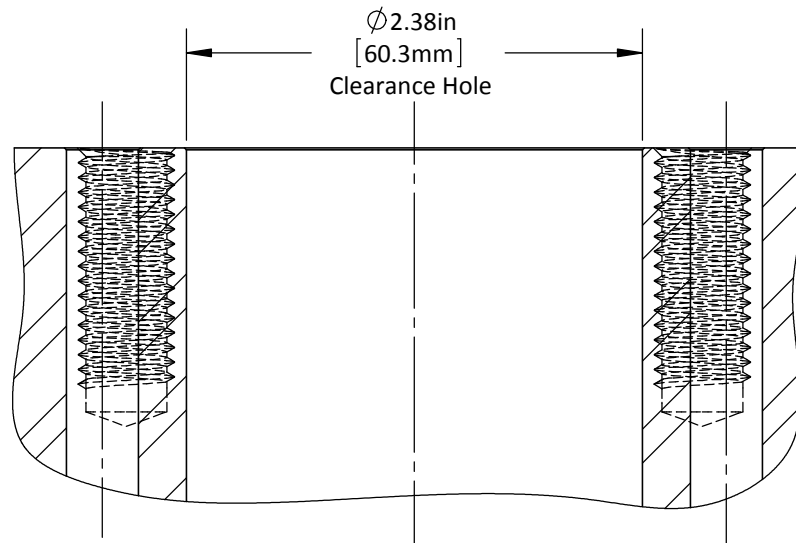


DO NOT SCALE DRAWING    REV **1**  
 This product may be covered by one or more patents or patent applications.  
 See <http://www.standardlifters.com/patents.html> for details.

**Base-GK175-A**  
**STANDARD LIFTERS INC**



Drill & Ream PF for Dowel  
 "E" =  $\phi$ .375in  
 "M" =  $\phi$ 10.00mm  
 (2) Places



DO NOT SCALE DRAWING | REV 1  
 This product may be covered by one or more patents or patent applications.  
 See <http://www.standardlifters.com/patents.html> for details.

**GK175-A-Base Machining**  
**STANDARD LIFTERS INC**