

# STANDARD LIFTERS

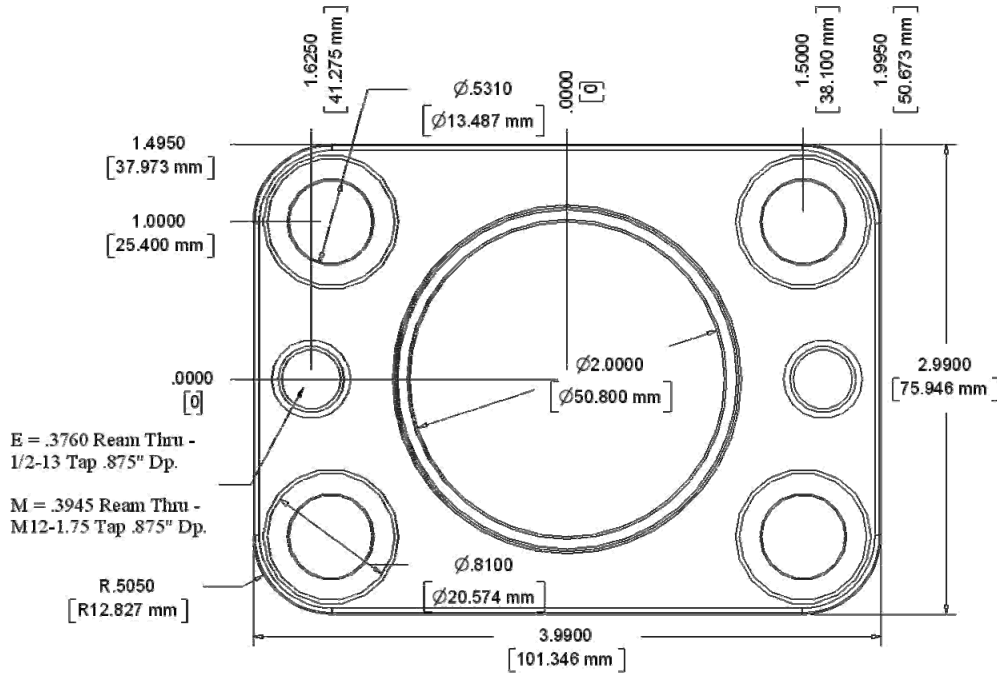
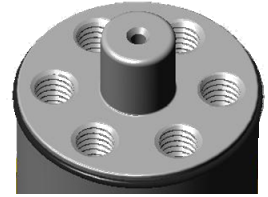
MAKING INNOVATION THE STANDARD



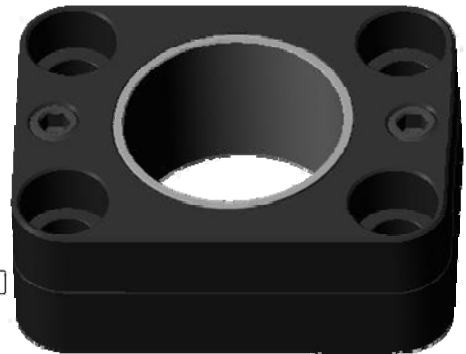
Toll Free: 1-877-754-3837 ~ Fax: (616) 301-2182 ~ www.standardlifters.com ~ sales@standardlifters.com

## GK200 Specifications

### GK200-A Base (Standard)



Base is 1.490" thick

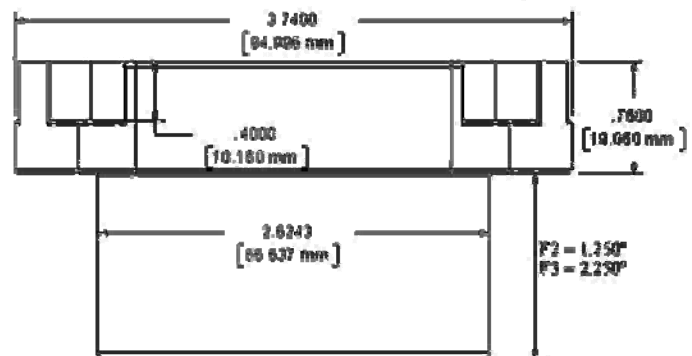
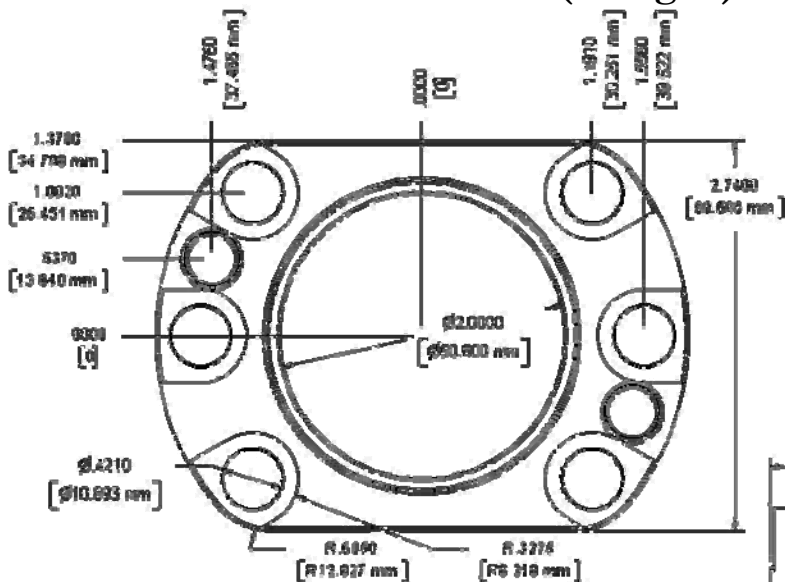


A 2.625" clearance hole is required below the guide pin location

Location of the base can be accomplished using dowels or the exterior of the base

### GK200-F2 & F3 Base (Flanged)

Flange is .75" thick



Location of the base is accomplished by a 2.625" (-0 +.001) bore that locates and supports the body of the base