

STANDARD LIFTERS

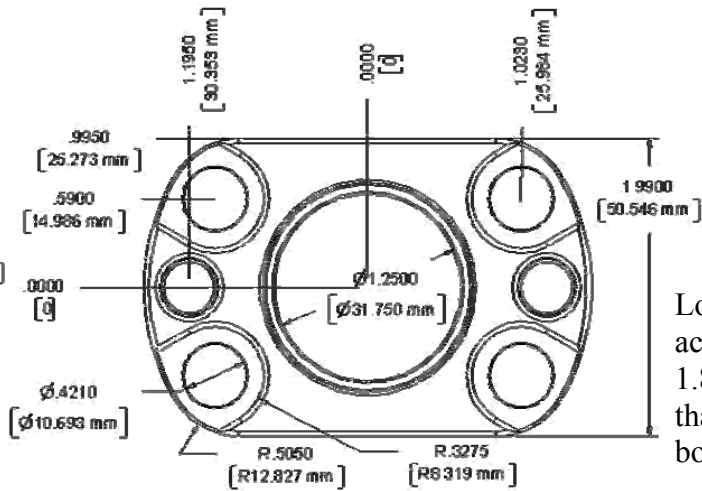
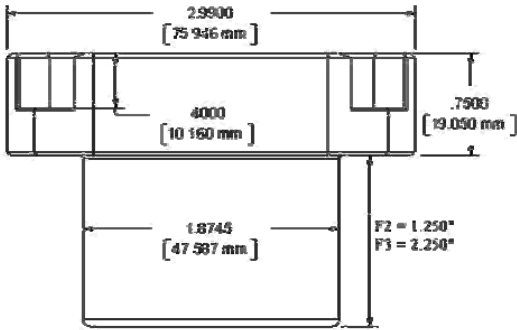
MAKING INNOVATION THE STANDARD



Toll Free: 1-877-754-3837 ~ Fax: (616) 301-2182 ~ www.standardlifters.com ~ sales@standardlifters.com

GK125 Specifications

GK125-F2 & F3 Base (Flanged)

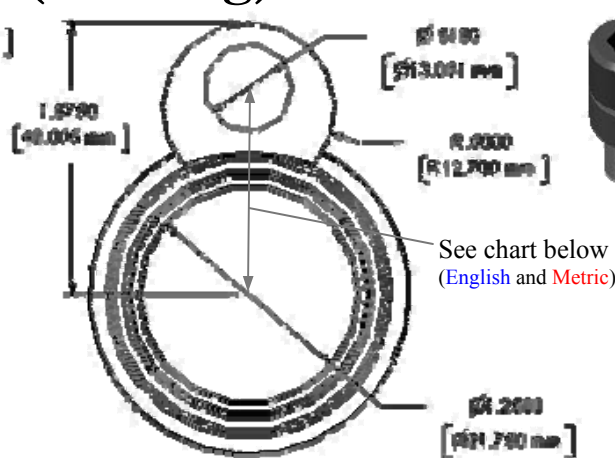
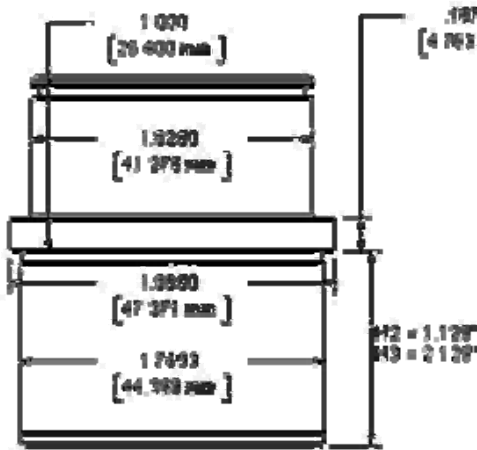


Flange is .75" thick



Location of the Base is accomplished by a 1.8750" (-0 +.001) bore that also supports the body of the base

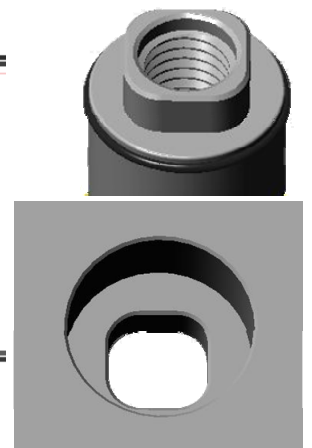
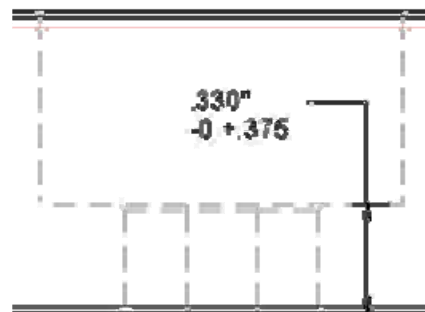
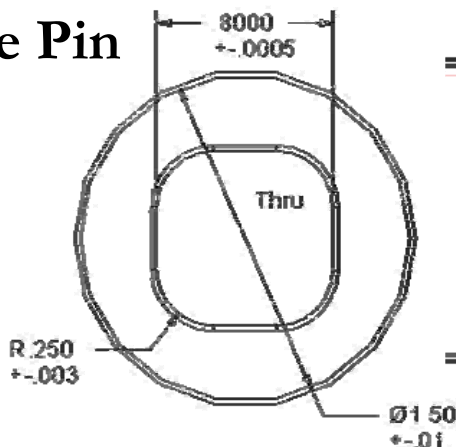
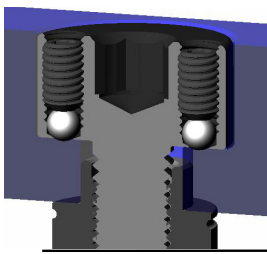
GK125-H2 & H3 Base (Bushing)



* The diameter of the guide pin head is .05" smaller than the finish bore size

Mounting Specs for	Bore Dia. (-0 +.0010)	Min. Bore Depth	# of Flange Clamps	English Cap Screw Size	Bolt Circle for English	Metric Cap Screw Size	Bolt Circle for Metric
GK125	1.7500	Thru	3	1/2-13	1.200" Rad.	M12-1.75	1.186" Rad.

GK125 Guide Pin Connection Machining



All dimensions shown with 4 decimal places for programming purposes