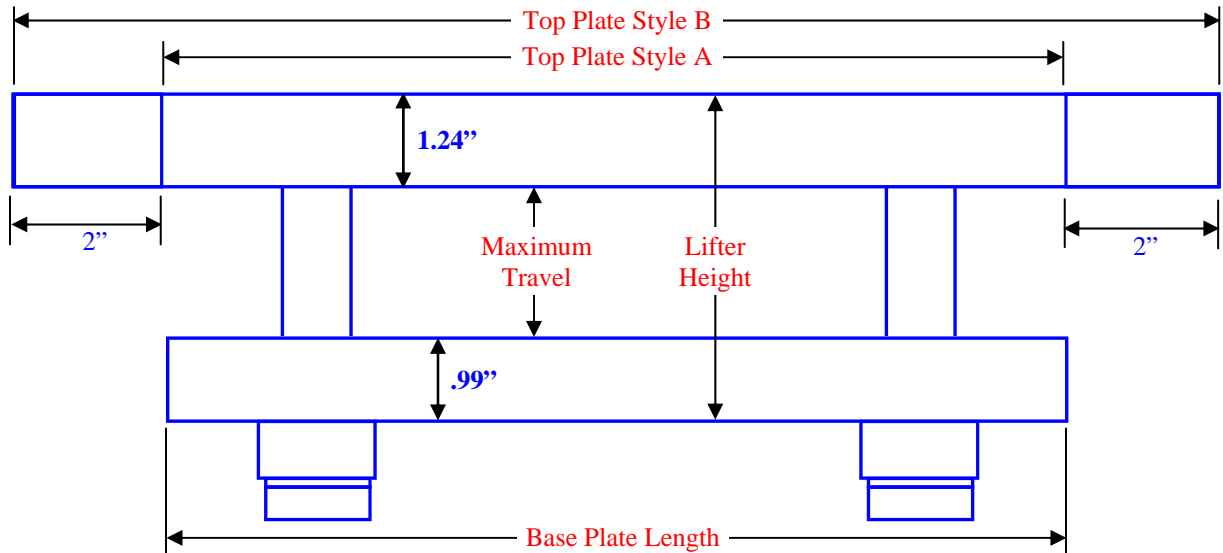
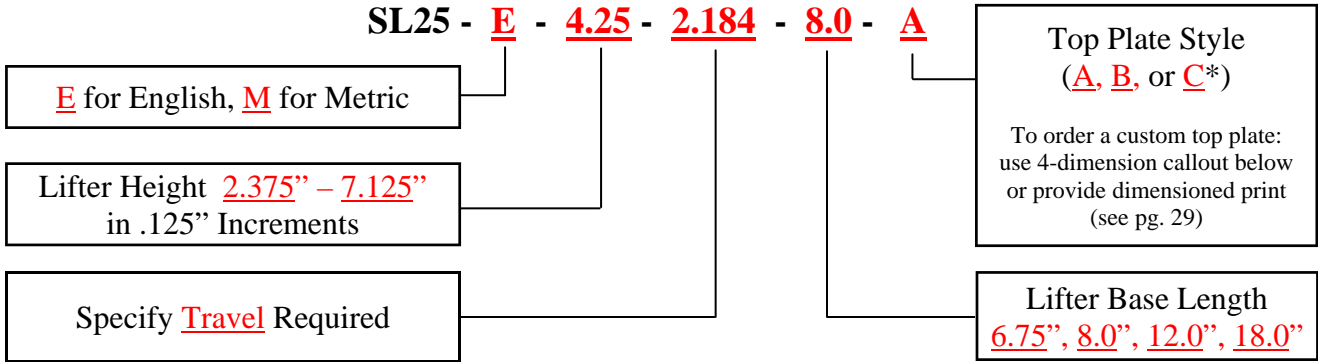




## SL25 Ordering Instructions

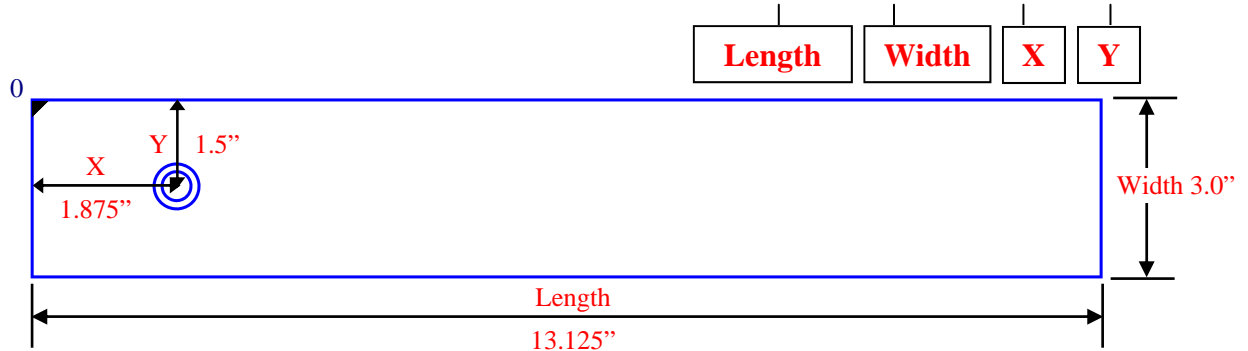
### Lifter Part # Ordering Example

SL25 - E - 4.25 - 2.184 - 8.0 - A



### Made to Order Top Plate

Example: SL25-E-4.25-2.184-8.0-C-13.125 - 3.0 - 1.875 - 1.5



Maximum Recommended Top Plate Length = 160% of Base Length