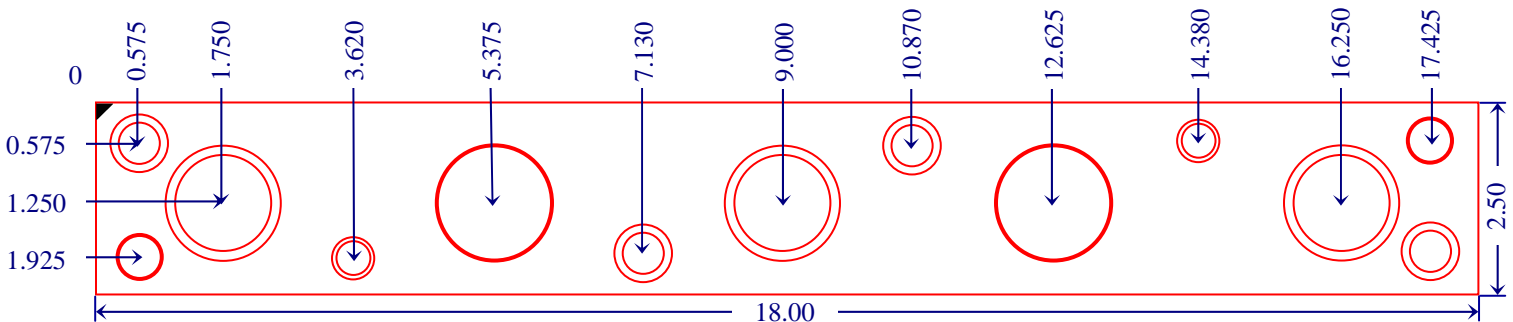
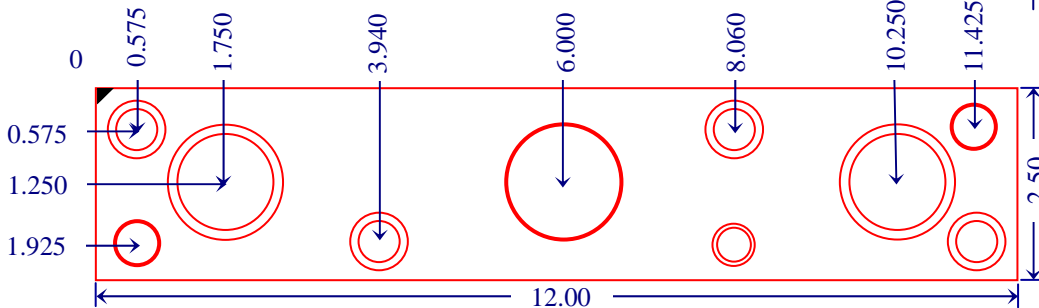
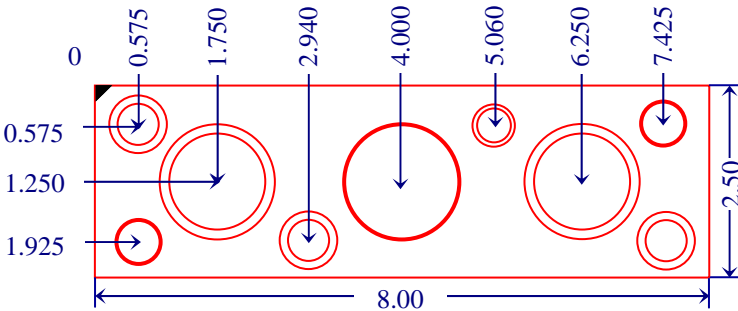
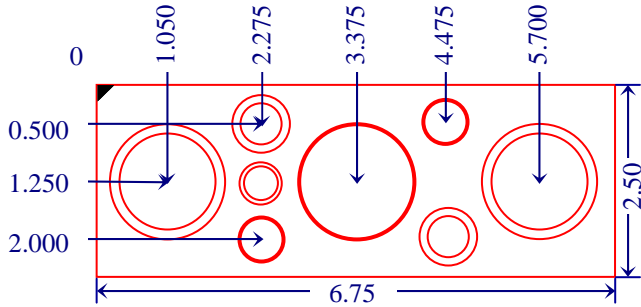




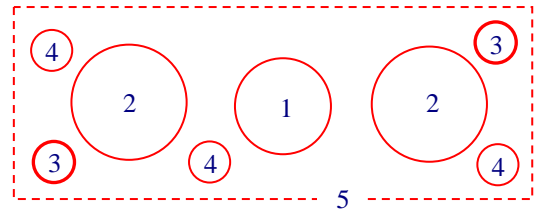
SL25 Specifications

SL25 Series A & B Top Plates include holes to access base plate screws unless otherwise specified

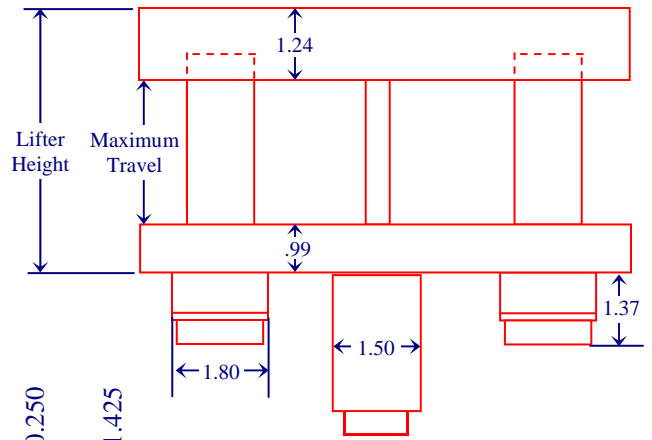
4 BASE SIZES



FOOTPRINT OF BASE



1. Drill 1.625" diameter to clear for spring can
2. Drill 1.875" diameter to clear for guide pins
3. Ream 1" deep for 1/2" or 12mm dowel pins
4. Tap 1" deep for 1/2" or 12mm cap screw
5. Leave .05" between lifter and adjacent blocks



**U.S. Patent No.
7,024,910 U.S.
and Foreign
Patents Pending**