



SL19 Ordering Instructions

Lifter Part # Ordering Example

SL19 - E - 4.25 - 1.637 - 7.0 - A

E for English, M for Metric

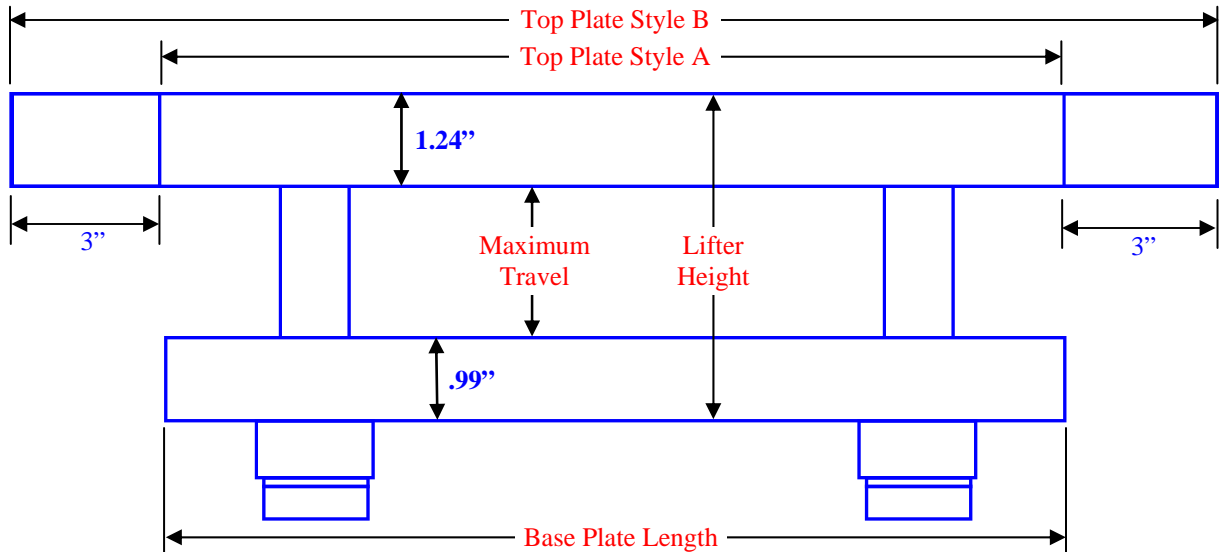
Lifter Height 2.375" - 7.125"
in .125" Increments

Specify Travel Required

Top Plate Style
(A, B, or C*)

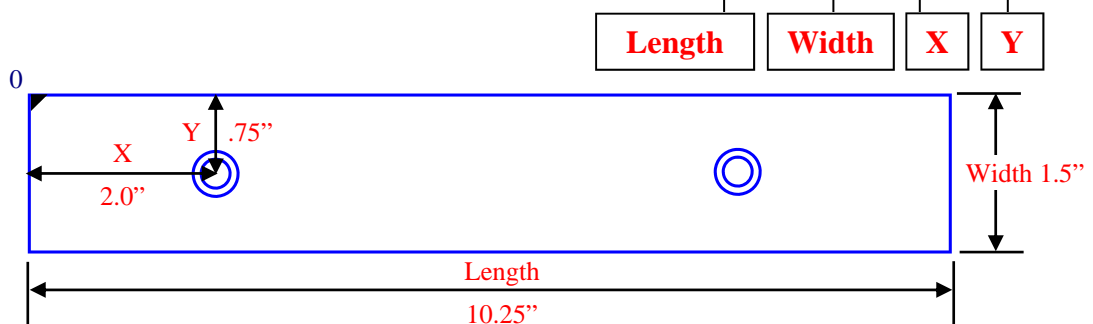
To order a custom top plate:
use 4-dimension callout below
or provide dimensioned print
(see pg. 29)

Lifter Base Length
7.0", 12.0", 18.0"



Made to Order Top Plate

Example: SL19-E-4.25-1.637-7.0-C-10.25 - 1.5 - 2.0 - .75



Maximum Recommended Top Plate Length = 160% of Base Length