

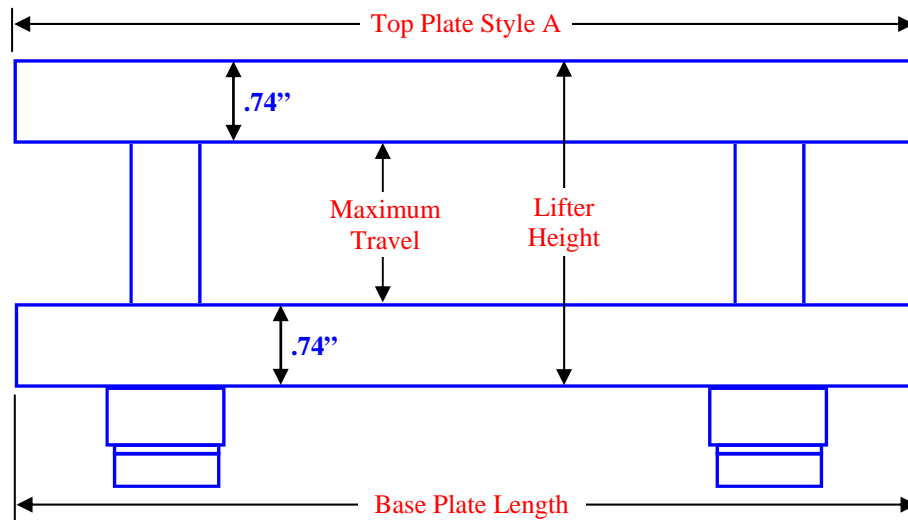


SM12 Ordering Instructions

Lifter Part # Ordering Example

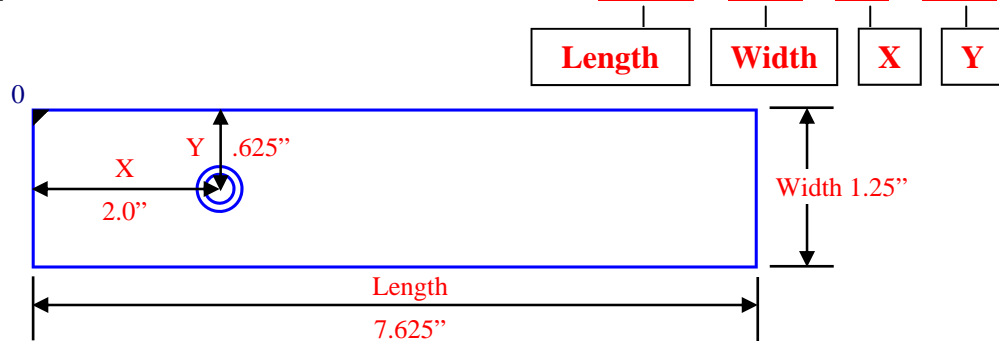
SM12 - E - 3.25 - 1.324 - 5.375 - A

| | | |
|---|--|---|
| <u>E</u> for English, <u>M</u> for Metric | | Top Plate Style (<u>A</u> or <u>C*</u>) |
| Lifter Height <u>1.625"</u> - <u>6.25"</u> in .125" Increments | | To order a custom top plate: use 4-dimension callout below or provide dimensioned print (see pg. 29) |
| Specify <u>Travel</u> Required | | Lifter Base Length <u>5.375"</u> , <u>9"</u> , <u>14"</u> |



Made to Order Top Plate

Example: SM12-E-3.25-1.324-5.375-C-7.625 - 1.25 - 2.0 - .625



Maximum Recommended Top Plate Length = 160% of Base Length