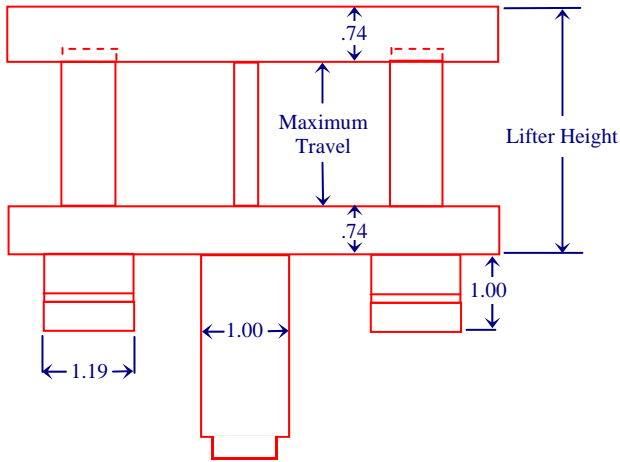
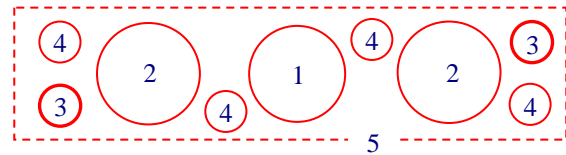




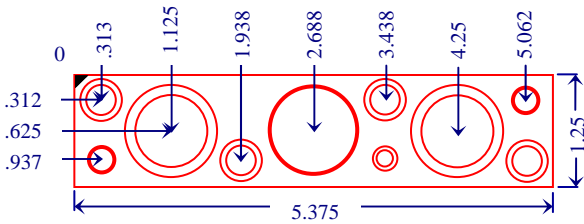
SM12 Specifications



FOOTPRINT OF BASE



1. Drill 1.125" diameter to clear for spring can
2. Drill 1.25" diameter to clear for guide pins
3. Ream .75" deep for 5/16" or 8mm dowel pins
4. Tap .75" deep for 5/16" or 8mm cap screw
5. Leave .05" between lifter and adjacent blocks



3 BASE SIZES

**U.S. Patent No.
7,024,910 U.S.
and Foreign
Patents Pending**

