

STANDARD LIFTERS

MAKING INNOVATION THE STANDARD®



Engineering Data Gas Spring Clamps




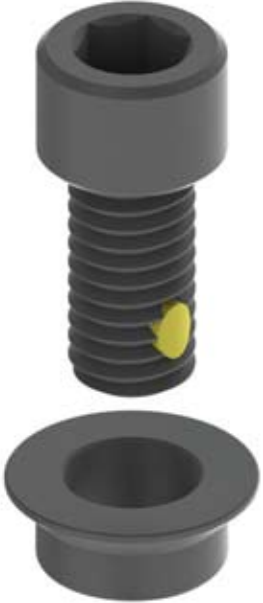
<p>Product Options</p>	
<p>Component Dimensioned Prints</p>	
<p>Machining Guidelines</p>	

The New Industry Standard

May be covered by one or more of the following patents:

6,848,290 - 7,024,910 - 7,730,757 - 7,950,262 - and other Patents Pending

Product Scope and Options

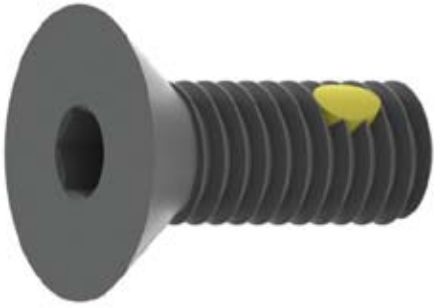

Part #	Clamp Style	Fastener Style
A-F	<p>Clamp Style <u>A</u></p> 	<p>Fastener Style <u>E</u> Flat Head</p> 
B-S	<p>Clamp Style <u>B</u></p> 	<p>Fastener Style <u>S</u> Standard</p> 



Choose your Fastener Type

The only thing you need to consider is the fastener type you prefer or are allowed to use.

Fastener Type

Flat Head Cap Screw	Standard Cap Screw
<ul style="list-style-type: none">• Hex Size provides ideal torque• Low Profile• Most economical• 2 Parts	<ul style="list-style-type: none">• Standard Cap Screw may require clearance based on application• Tapered Ring is required• 3 Parts
	

Negative perception of Flat Head Screws in Dies?

Here is what we found and why it DOES NOT apply in this application

Traditional Application

There is a large amount of contact surface between the taper on the Flat Head Screw and the block it is securing. This generally presents a problem only when the screw is being removed because the surface friction combined with the “smaller” hex size can make it difficult to loosen.



The GSC Application

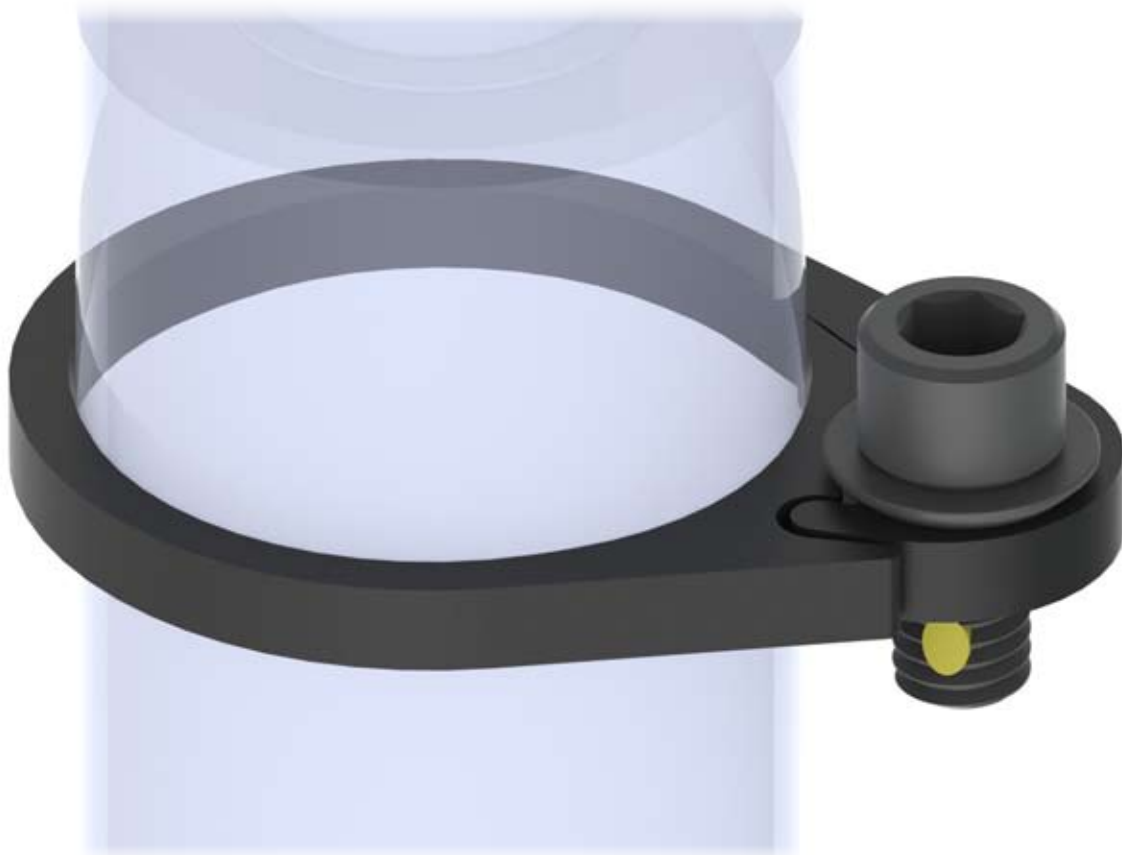
The Flat Head Screw only makes POINT contact with the Gas Spring Clamp, so there is not a large surface area that can cause the Flat Head Screw to “size up” when removing.



General Guidelines

Clamping Anywhere on the Z-Axis

- The GSC is designed to clamp anywhere on the Z-Axis. It does not require a groove or feature on the Gas Spring body to clamp onto. The diameter of the Gas Spring is the only thing that you need to consider.



General Recommendations

- We do NOT recommend using the GSC on “uncontained” Gas Spring applications. For example Gas Springs used to “drive” a lifter bar or rack from above.
- Screws with a nylon patch should be used (provided)
- Back-up is required to support the full load of the Gas Spring

Product # Structure

Product Line	Gas Spring Diameter (mm)	Clamp Style	Fastener Type	English/ Metric
GSC	38	B	S	E
		A or B	F or S	E or M
Example: GSC-38-B-S-E				



A



B



F



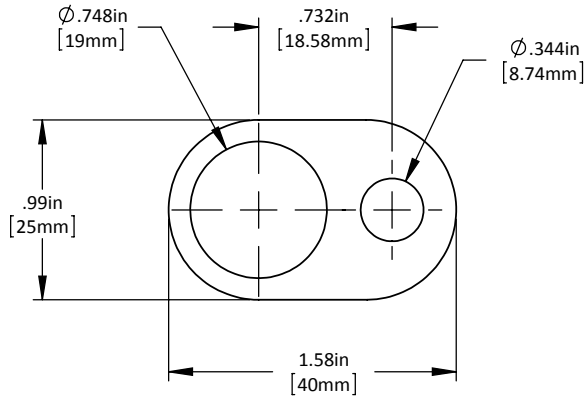
S



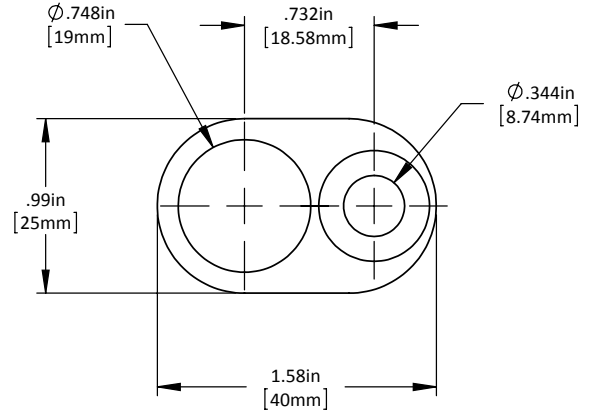
Pricing

Gas Spring Body Diameter	 <p style="text-align: center;">A-F</p>	 <p style="text-align: center;">B-S</p>
19mm	\$5.00	\$6.00
25mm	\$5.50	\$6.50
32mm	\$6.50	\$7.50
38mm	\$7.00	\$8.00
44.5mm	\$7.50	\$8.50
50mm	\$8.00	\$9.00
63mm	\$9.00	\$10.00
75mm	\$10.00	\$11.00

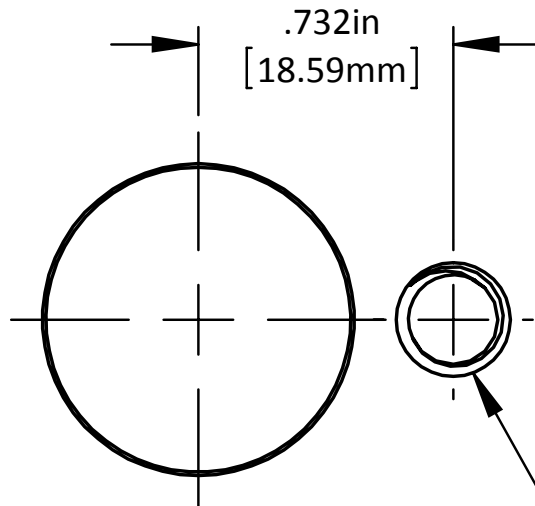
GSC - 19mm - A



GSC - 19mm - B

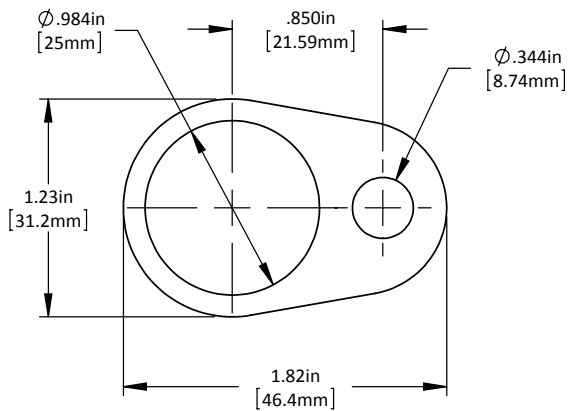


Machining

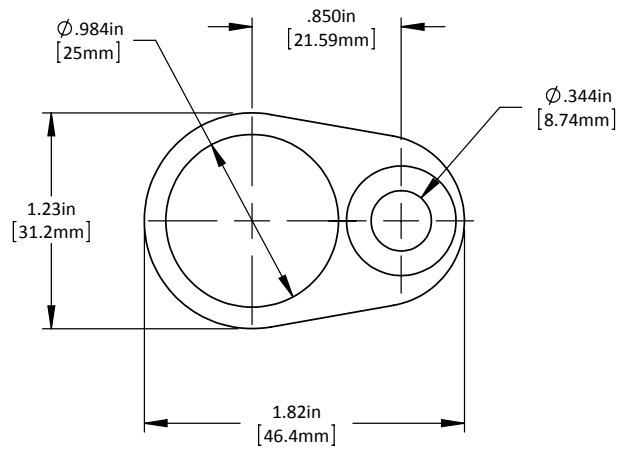


"E" = 5/16"-18 Tap X .62in Dp.
"M" = M8-1.25 Tap X 16mm Dp.

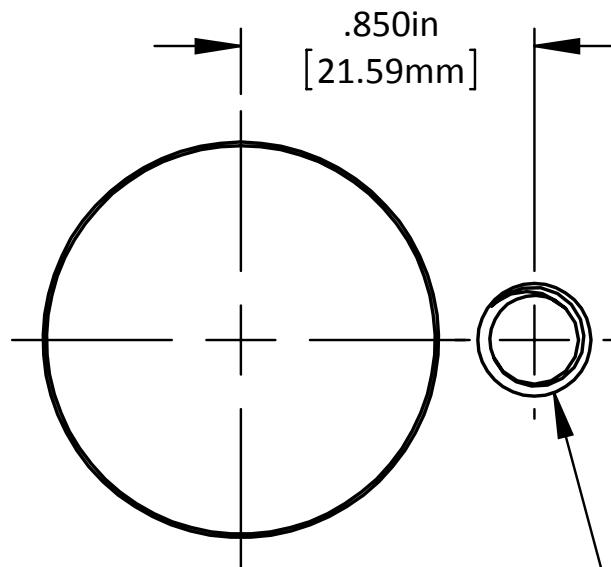
GSC - 25mm - A



GSC - 25mm - B

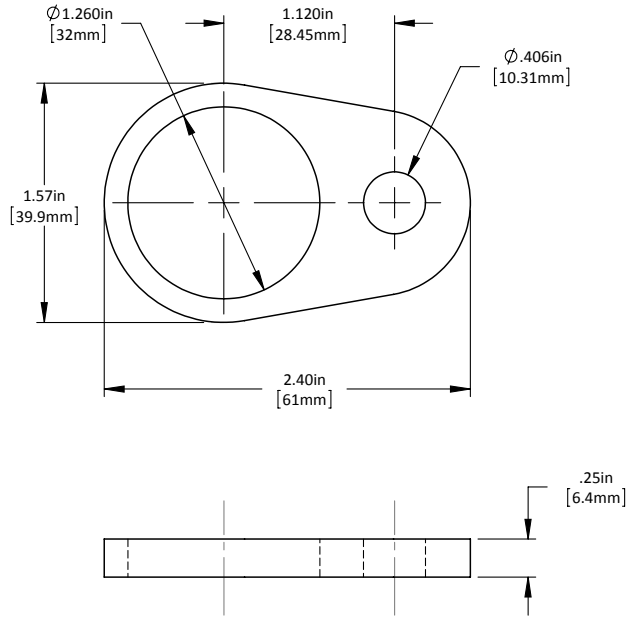


Machining

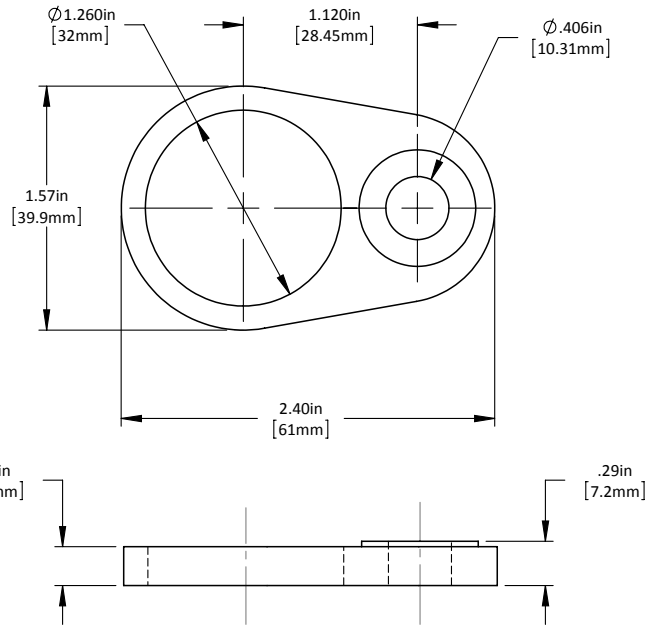


"E" = 5/16"-18 Tap X .62in Dp.
"M" = M8-1.25 Tap X 16mm Dp.

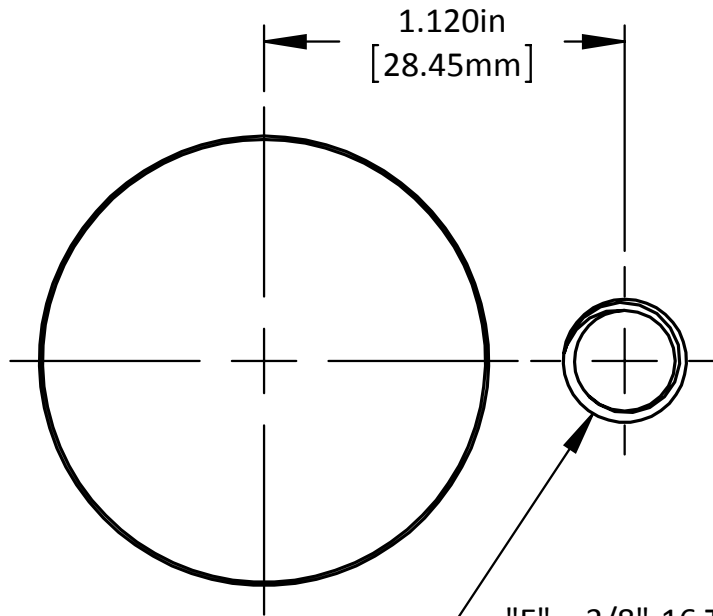
GSC - 32mm - A



GSC - 32mm - B

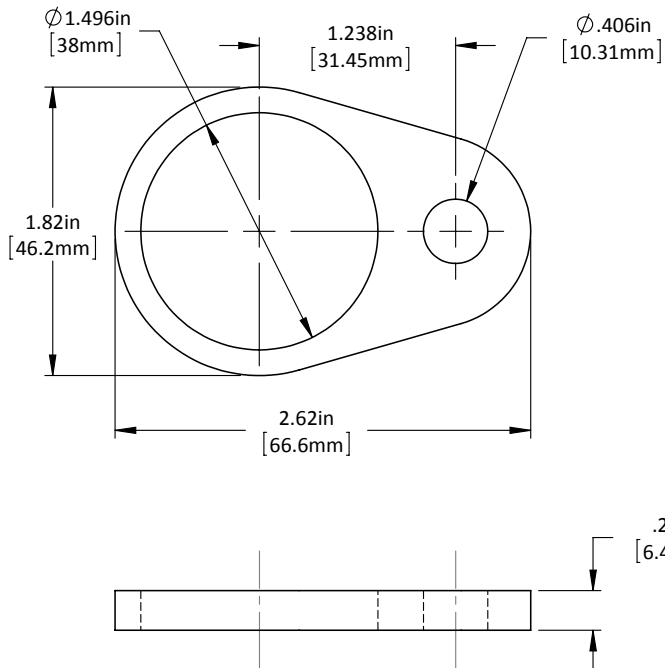


Machining

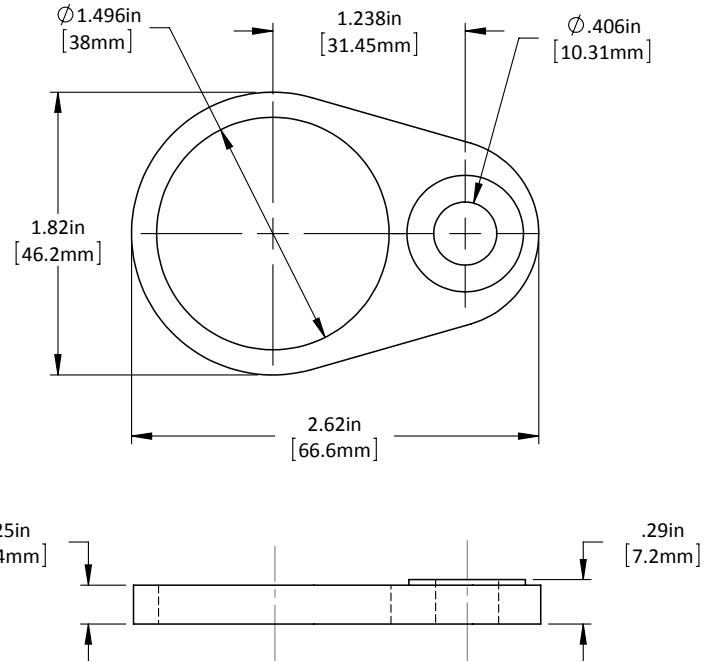


"E" = 3/8"-16 Tap X .75in Dp.
"M" = M10-1.50 Tap X 20mm Dp.

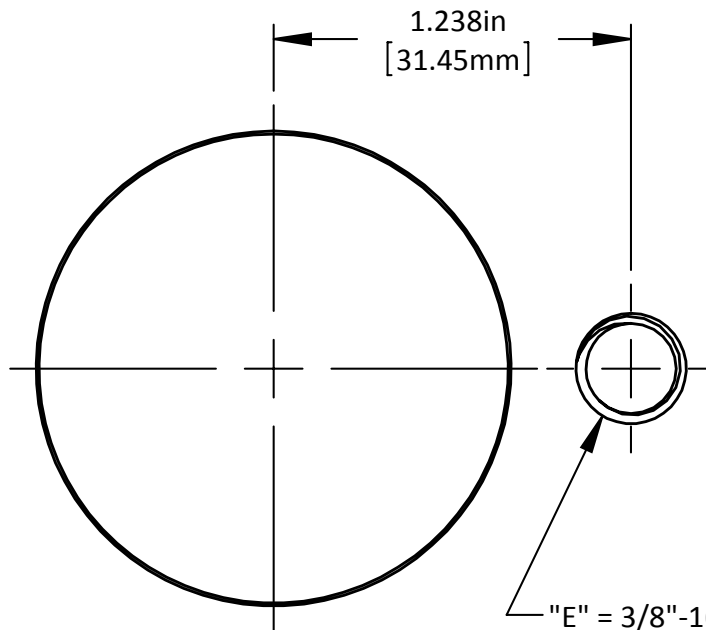
GSC - 38mm - A



GSC - 38mm - B

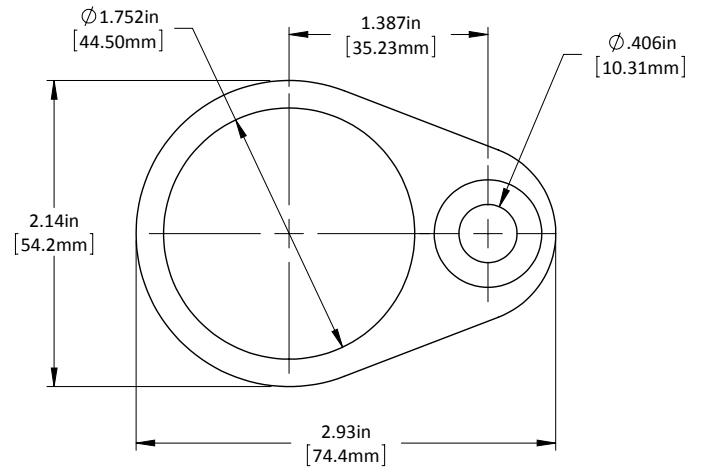
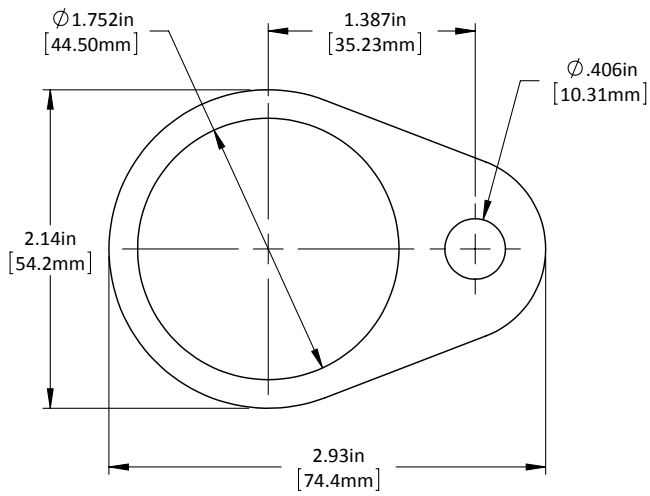


Machining

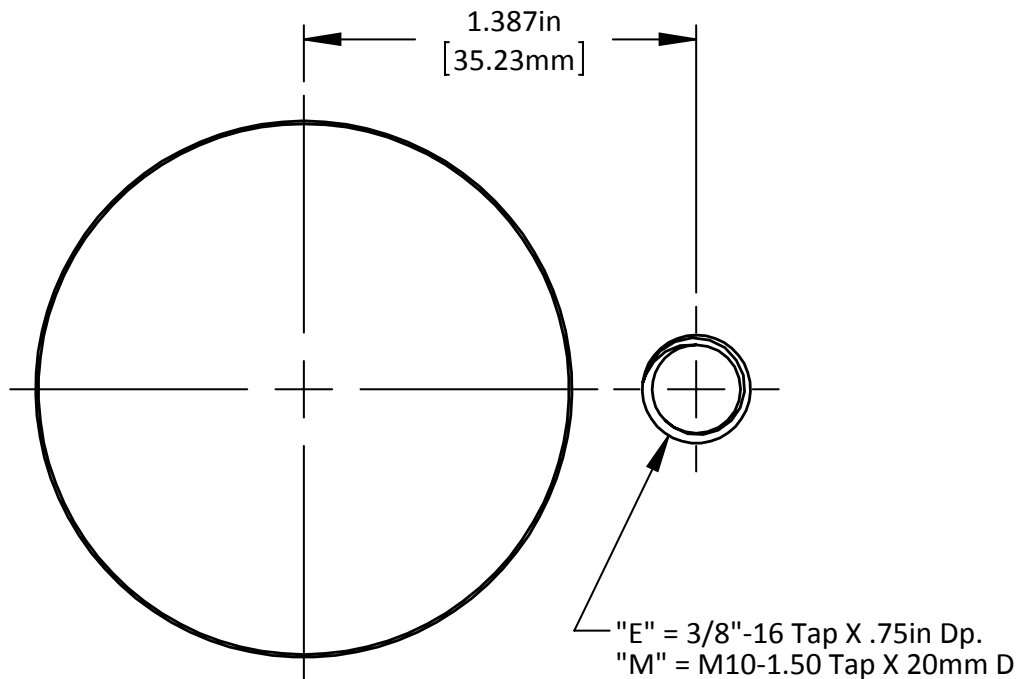


"E" = 3/8"-16 Tap X .75in Dp.
"M" = M10-1.50 Tap X 20mm Dp.

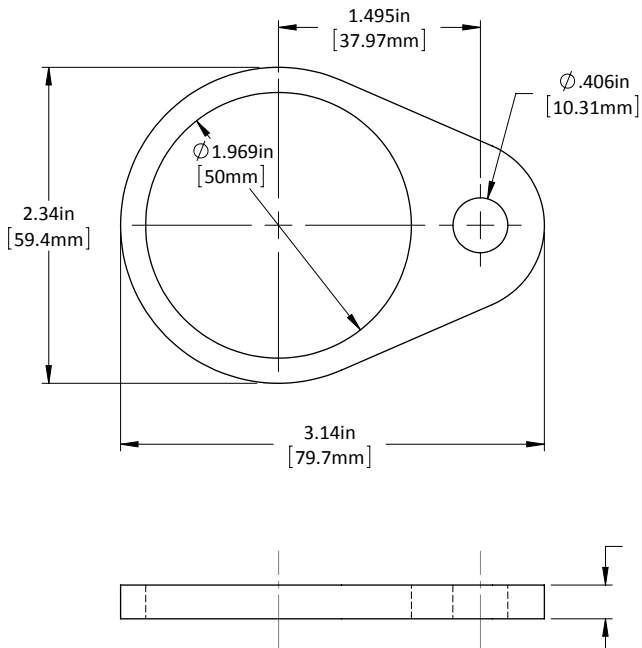
GSC - 44.5mm - A GSC - 44.5mm - B



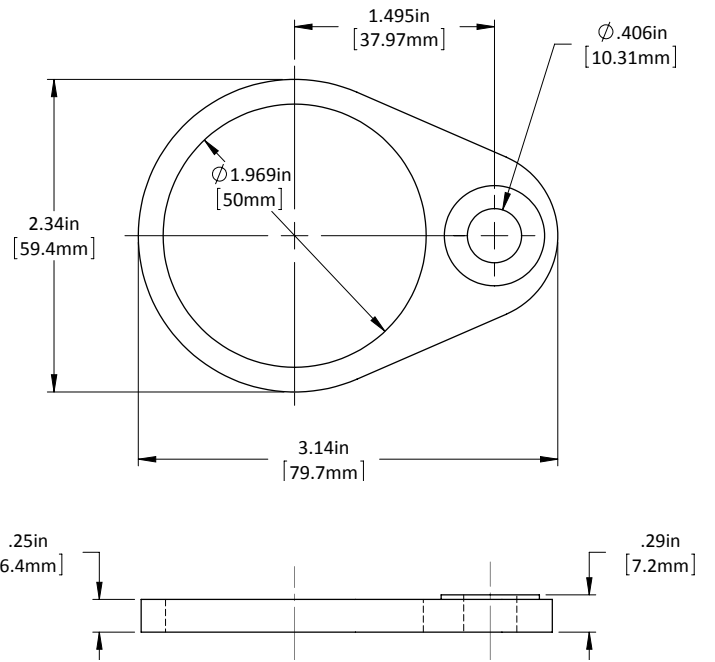
Machining



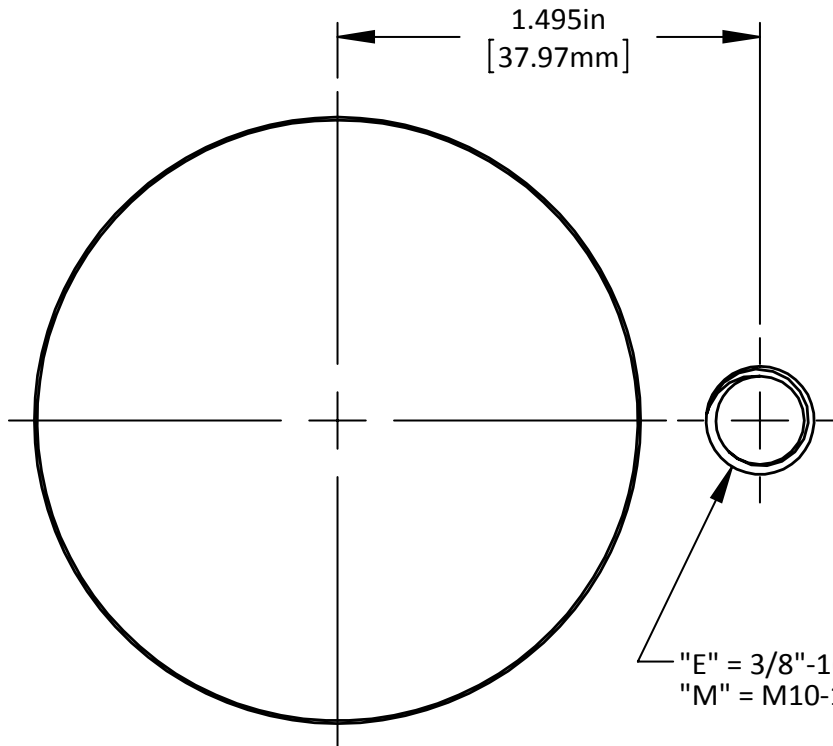
GSC - 50mm - A



GSC - 50mm - B



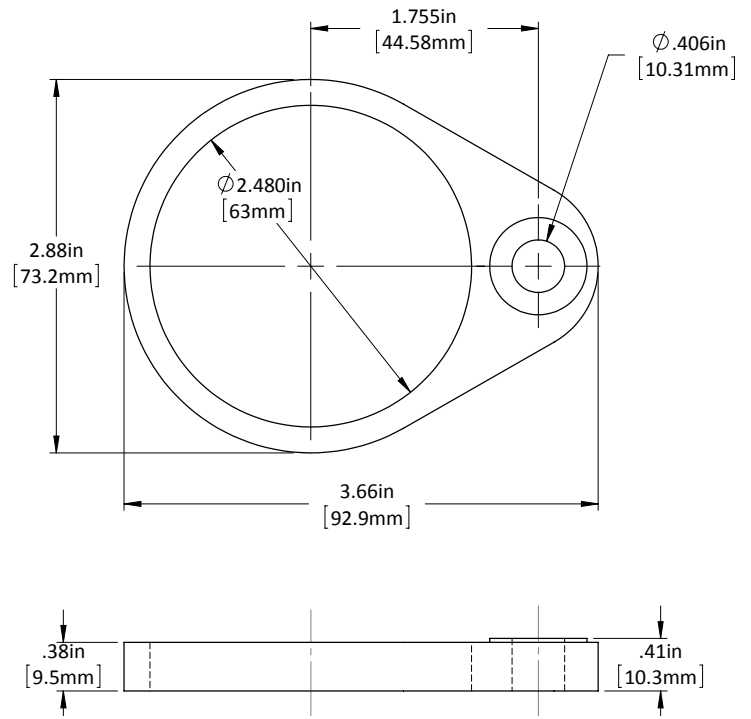
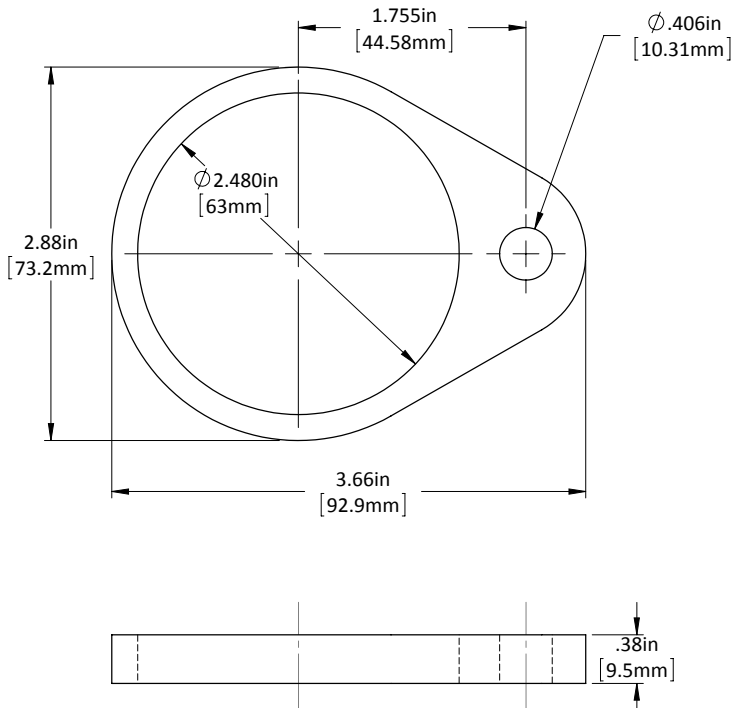
Machining



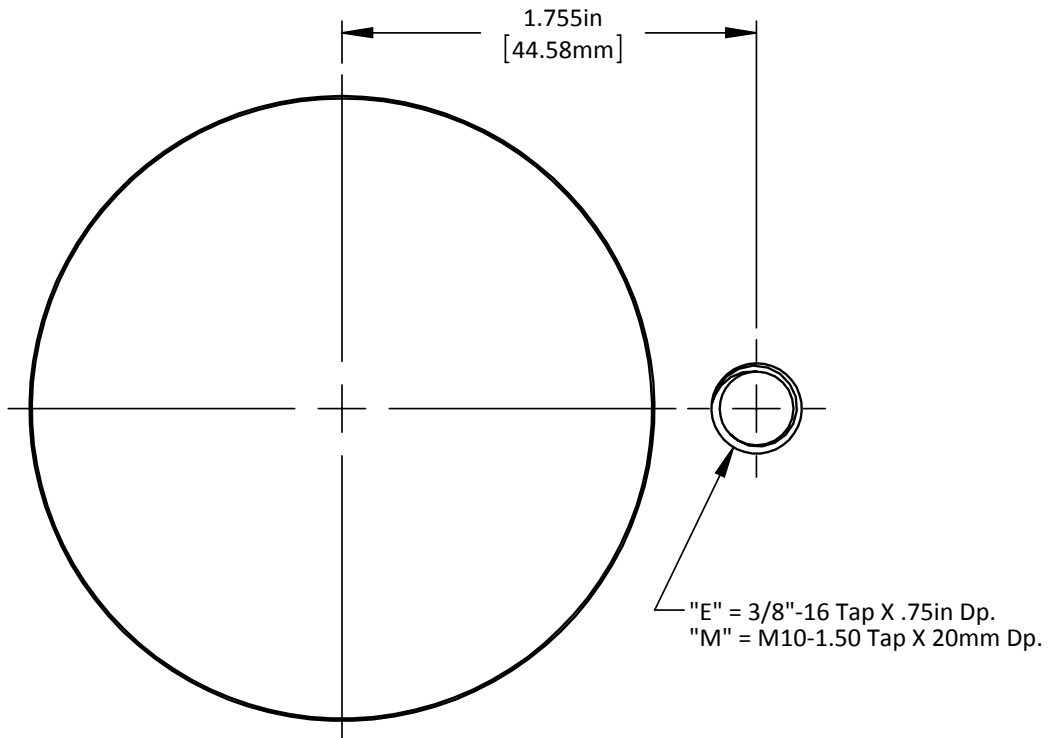
"E" = 3/8"-16 Tap X .75in Dp.
"M" = M10-1.50 Tap X 20mm Dp.

GSC - 63mm - A

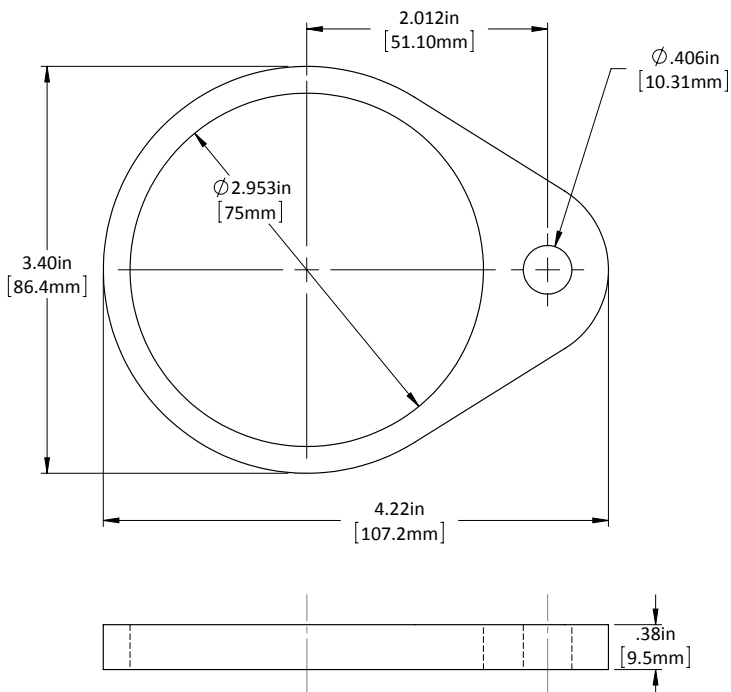
GSC - 63mm - B



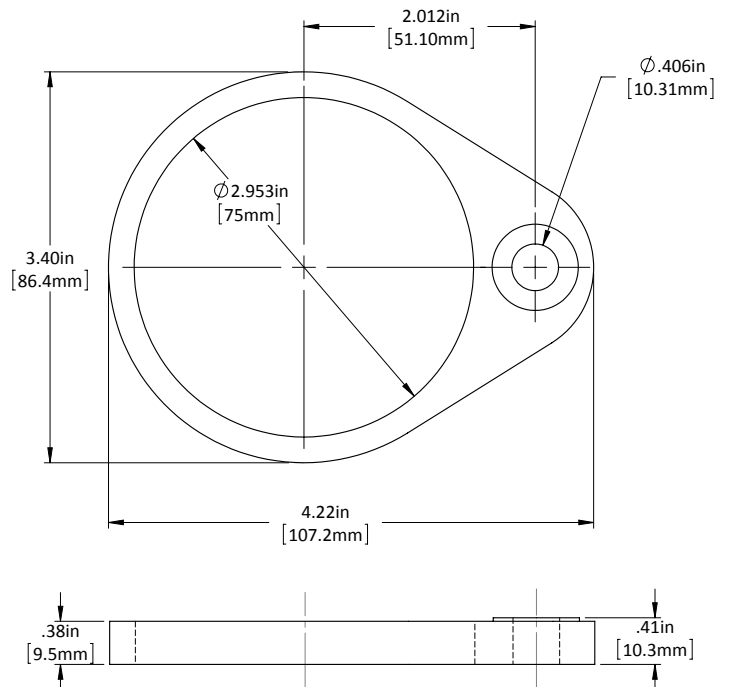
Machining



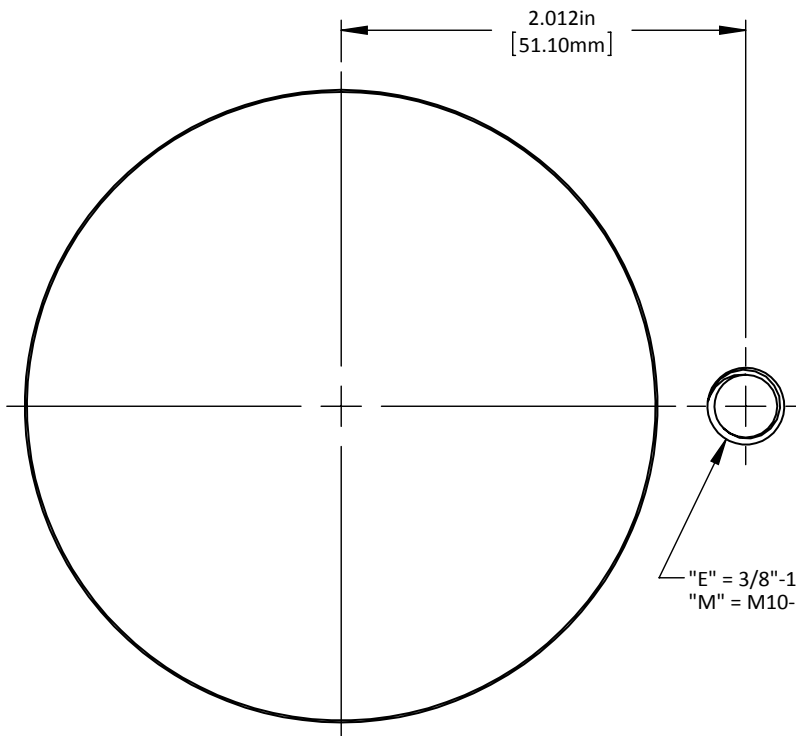
GSC - 75mm - A



GSC - 75mm - B



Machining



"E" = 3/8"-16 Tap X .75in Dp.
"M" = M10-1.50 Tap X 20mm Dp.

This page intentionally left blank ...
(that is until we added this text)

For New and Updated Information
www.standardlifters.com

